

# Wavelengths



## Volume 64 – Issue 11

### Contents

Upcoming Events	1
Chair's Column	2
DISTINGUISHED LECTURE	4
Tech Activities REPORT	5
This Month in November	6
Voting 2024	8
Life in Space:	9
Officer Job Training:	10
ESW 2024	11
Next Senior Elevation	12
2024 / 2025 SEM Officers	13
Reading the Roster	13
RoboFest News	14
2025 Geo-unit Planning:	16
Pushing Limits:	18
ORG UNITS cheat sheet	19
Activities & Events	21
Executive Committee	22
ExCom 2024 Meeting Schedule	24
Planned ExCom 2025 Meeting Schedule	24
Finding Events : vtools	25
Editorial Corner	26
Web & Social Sites	28
Leadership Meetings	29
Advertising Rates	29

### Upcoming Events

We have several events coming up this month, all are listed below, FYI.  
*Note: All times are EST/EDT. If any events are missed do kindly bring them to the attention of [wavelengths@ieee-sem.org](mailto:wavelengths@ieee-sem.org). Enjoy!*

You can also use this bookmark to view All of the links at a single glance  
<http://bit.ly/sem-upcoming>

Event	Date	Time
<a href="#">Documentary Night: Secret of Tuxedo Park</a>	2024-11-01	1830 hrs
<a href="#">Time and Life Management</a>	2024-11-02	1100 hrs
<a href="#">Consulting &amp; Entrepreneur 101</a>	2024-11-06	1845 hrs
<a href="#">Suggestions on Leading a Committee</a>	2024-11-09	1100 hrs
<a href="#">Southeastern Michigan Section Senior Member Elevation</a>	2024-11-09	1000 hrs
<a href="#">SEM Life Members Affinity Group - Admin Meeting</a>	2024-11-11	1200 hrs
<a href="#">Ch8: AdCom Teleconference</a>	2024-11-14	1100 hrs
<a href="#">SEM Section ExCom Monthly Meeting (virtual) For NOVEMBER 2024</a>	2024-11-14	1830 hrs
<a href="#">The Technical Publishing World from Academia to Industry : IEEE Women In Engineering</a>	2024-11-14	1900 hrs
<a href="#">Embedded Systems Workshop 2024</a>	2024-11-16	0830 hrs
<a href="#">How to Consistently Convert Prospects into Paying Consulting Clients</a>	2024-11-18	1900 hrs

**Chair’s Column**

**What to look forward to this month of November:**

- ESW (Embedded System Workshop) 2024, November 16th
- Senior Elevation Event – November 9th

**Volunteering:**

- ✓ We, IEEE Southeastern Michigan Section, function based on the work of our volunteers. If someone has important obligations that reduce their ability to volunteer, other volunteers need to step in and carry the load. The more volunteers we have, the easier the workload on everyone. Please volunteer, you will find the experience interesting and rewarding. There is a dedicated article on volunteering elsewhere in this edition.

You can find ALL the other upcoming events using the short URL link: <https://bit.ly/sem-upcoming>

Our YTD performance (from Vtools) or [https://events.vtools.ieee.org/tego/\\_events/activity](https://events.vtools.ieee.org/tego/_events/activity):

### EVENTS ACTIVITY

Year ? 
Organizational Unit ? 
Child OUs ?

R40035 - Southeastern Michigan Section Charts ? These data counts and charts include the selected OU and all related organizational units. See below for individual OU numbers and charts.

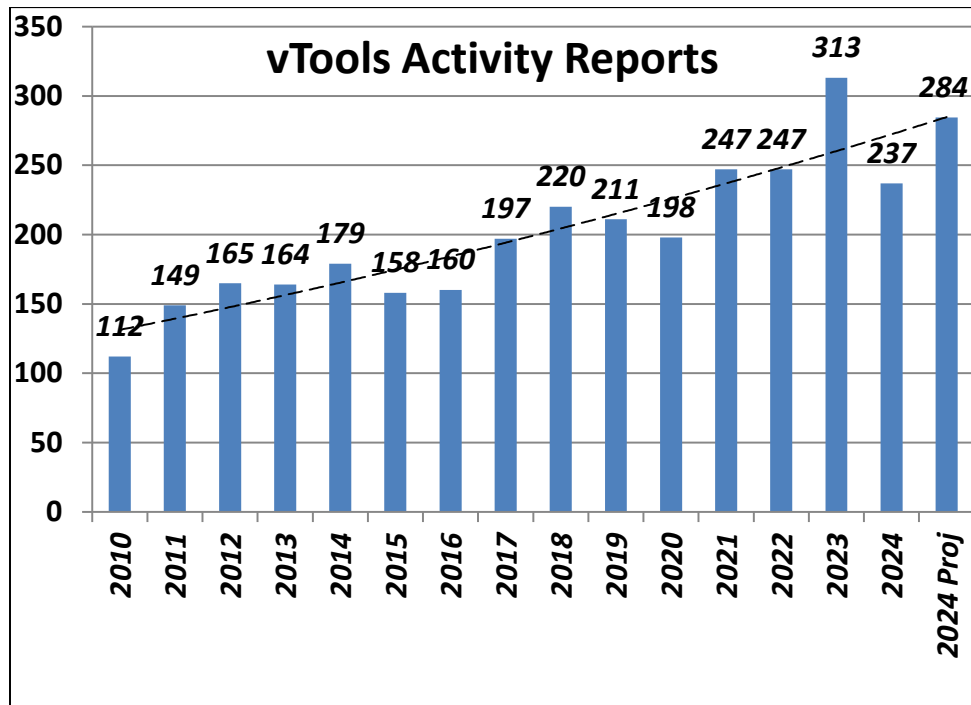
Name	Prof	Tech	Non-Tech	Admin	Hum	Pre-U	Total
Southeastern Michigan Section	32	154	6	110	7	1	310

■ Reported
■ Unreported
■ Future

#### Events by Category

#### Virtual Events

#### Events by Day of Week



Remember – every little bit helps, and the Section is here to help! If you have not taken the opportunity, do reach out to any of the Section officers (lifelong email contacts listed below). Who knows what unknown but immense value you may discover, by simply connecting with us. A possible membership annual rate discount, OR an upcoming soft skills event OR need of a professional member for a technical person resource OR opportunity to participate in a standards making process OR a chance to mentor a young graduate student in a domain badly needed in our section of the world OR network with a book publisher OR....the possibilities are limited only by your enthusiasm.

Finally, I ask you to help share news about our IEEE Section to fellow engineers. This will help us fulfill the mission and goals, which is to use technology to help society. Do help us gain more visibility – word of mouth, invitations to our tech events, skills, join as members, post our events to your social media feeds, etc.

Also of note – we take a great deal of interest in our members welfare. The **6<sup>th</sup> senior member elevation** event is taking place soon (November 9<sup>th</sup>). See the announcement in this issue. Note we have been timing these at least 2-3 weeks before each IEEE-HQ A&A panel meeting!

I look forward to hearing from you and seeing you at our events. As always, your ideas and suggestions are encouraged and welcome. If I don't hear back (good or bad) I will assume all is well 😊



**Sharan Kalwani**

Via email: [chair@ieee-sem.org](mailto:chair@ieee-sem.org)

Section members are encouraged to engage using any of these online platforms:



To reach any of our SECTION officers, for any help/assistance you seek you may try these easy to remember email addresses. The objective is to ensure business continuity, so one need not try to remember or hunt for the contact information! They can help you find your chapter officers or point you in the right direction for any query. They are:

- |                 |  |
|-----------------|--|
| 📧 Chair is      | <a href="mailto:chair@ieee-sem.org">chair@ieee-sem.org</a>         |
| 📧 Vice Chair is | <a href="mailto:vicechair@ieee-sem.org">vicechair@ieee-sem.org</a> |
| 📧 Treasurer is  | <a href="mailto:treasurer@ieee-sem.org">treasurer@ieee-sem.org</a> |
| 📧 Secretary is  | <a href="mailto:secretary@ieee-sem.org">secretary@ieee-sem.org</a> |
| 📧 Advisor is    | <a href="mailto:advisor@ieee-sem.org">advisor@ieee-sem.org</a>     |

**DISTINGUISHED LECTURE**

William Gould Dow Distinguished Lecture

***Implications of Our Dependence on a Digital Ecosystem***

Vinton G. Cerf

Vice President and Chief Internet Evangelist @Google

**WHERE:**

Stamps Auditorium, Walgreen Drama Center [MAP](#)

**WHEN:**

Friday, November 8, 2024 @ 1:30 pm - 2:40 pm

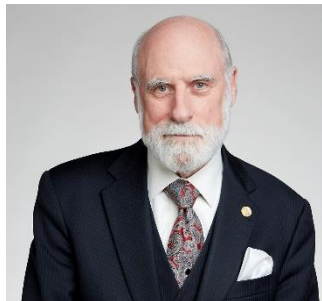
This event is free and open to the public

This event will also be shared as a webinar. Remote attendees can attend via this link:

<https://umich.zoom.us/j/98568633657>

A reception will follow the lecture.

**Abstract:** We have become a society deeply perfused with digital technology and the dependencies are increasing. There are social, economic and technical consequences of this dependence. These technologies are power enablers and amplifiers of human endeavor but they also introduce points of hazard and fragility. The challenges are not merely technical. They fall into sociological, anthropological, economical and political domains. To cope with them will make demands on our ability to understand and manage domestic and international relationships, norms, legal frameworks and myriad other considerations. We will explore some of these notions in the time available and provide opportunity for discussion.



**Bio:**

Vinton G. Cerf is Vice President and Chief Internet Evangelist for Google. He is the co-designer of the TCP/IP protocols and the architecture of the Internet. He has served in executive positions at ICANN, the Internet Society, MCI, the Corporation for National Research Initiatives, and the Defense Advanced Research Projects Agency. A former Stanford University Professor and former member of the US National Science Board, he is also the past President of the Association for Computing Machinery, Emeritus Chairman of the Marconi Society and serves in advisory capacities at NIST, DOE, NSF, US Navy, JPL and NRO. He earned his B.S. in mathematics at Stanford and M.S. and Ph.D. degrees in computer science at UCLA. He is a member of both the US National Academies of Science and Engineering, the Worshipful Company of Information Technologists, and the Worshipful Company of Stationers.

Cerf is a recipient of numerous awards for his work, including the US Presidential Medal of Freedom, US National Medal of Technology, the Queen Elizabeth Prize for Engineering, the Prince of Asturias Award, the Japan Prize, the Charles Stark Draper award, the ACM Turing Award, the Marconi Prize and Marconi Lifetime Achievement Award, the IEEE Medal of Honor, the Legion d'Honneur, the VinFutures Grand Prize and the Franklin Medal. He is a Foreign Member of the British Royal Society and Swedish Academy of Engineering and holds 31 honorary degrees.

**Faculty Host**

Ang Chen, Associate Professor, Electrical Engineering and Computer Science, [chenang@umich.edu](mailto:chenang@umich.edu)

## Tech Activities REPORT

Report ending: October 30<sup>th</sup>, 2024

Ch's & AG's	Ave Tech Mtg. Attend	Ave Tech Mtg Guest	#L31 -Technical	#L31 -Admin	#L31 Professional	#L31 -Other	Geo-Unit Name	# Unreported	Total Mtgs
Cnslt	43	20	1	1	5	0	Consultants Network	0	7
LIFE	0	0	0	10	0	0	Life Members	0	10
WIE	29	21	2	9	2	0	Women In Engineering	0	13
YP	14	0	3	10	0	0	Young Professionals	0	13
1	10	1	1	5	0	0	Circuits & Systems, Signal Proc., Info Th.	0	6
2	117	21	4	3	0	0	Vehicular Technology	1	7
3	29	4	1	0	0	0	Aerospace & Elec. Sys., Communications	0	1
4	22	2	9	0	0	0	Trident (Ant, Elect Dev., uWave, Photo)	0	9
5	48	6	46	7	5	4	Computers	2	62
6	30	4	4	0	0	0	Geoscience & Remote Sensing	0	4
7	32	3	9	5	0	1	Power Engineering, Industrial App.	1	15
8	71	33	10	8	0	0	Electromagnetic Compatibility (EMC)	0	18
9	304	21	1	6	0	0	Power Electronics, Industrial Electronics	1	7
10	4	1	1	6	0	0	Engineering Management	0	7
11	0	0	0	2	0	0	Eng. in Medicine & Biology	0	2
12	16	2	1	1	0	0	Control Systems	0	2
13	0	0	0	0	0	0	Education	0	0
14	23	0	2	1	0	1	Robotics & Automation	0	4
15	22	2	9	0	0	0	Nuclear Plasma Science Society	0	9
16	4	2	1	2	1	0	Computational Intelligence / Sys.Man.Cyber.	0	4
17	16	1	3	0	0	1	Nano Technology Council	0	4
18	20	10	2	1	0	0	Magnetics Society	1	3
									0
<b>SEM</b>	<b>84</b>	<b>46</b>	<b>4</b>	<b>19</b>	<b>6</b>	<b>1</b>	<b>SEM (Section)</b>	<b>8</b>	<b>30</b>
<b>Tot</b>	<b>939</b>	<b>197</b>	<b>114</b>	<b>96</b>	<b>19</b>	<b>8</b>	<b>NOTE: Highlight Green = Active</b>	<b>14</b>	<b>237</b>
		<b>21%</b>					<b>NOTE: Highlight clear = Concern</b>		

SEM Section Chapter and Affinity group leaders who are not showing any technical or administrative meetings are encouraged to reach out to the TAcOm for assistance. Those chapters and groups with unreported meetings please update your L31 reporting. Please refer to the Section Health snapshot above.

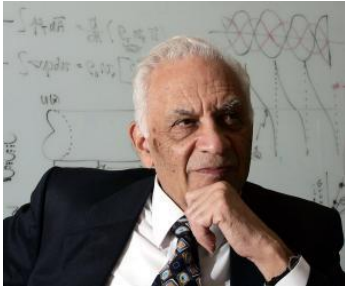
We'd like to focus on Chapter 9 with one unreported meeting. Chapters 1, 3, 9, 10, 11, 12, 13, and 16 need to add/conduct technical meetings so as to keep their current chapter designation. There are several chapters with at least one technical and or professional meeting reported. This is an end of year push to get all of our technical chapters healthy. As a whole our Section continues to exceed our projections for technical meetings hosted for our membership. Thanks to all GAs working to engage their membership.

V/r Jeffery V. Mosley  
 Chair, Technical Activities Committee (TAcOm)  
[jvmosley@ieee.org](mailto:jvmosley@ieee.org)  
 Southeastern Michigan Section, IEEE Region 4

## This Month in November

**Or: Notable Events in Engineering & Science History, which I Did Not Know! ☺**

**NOVEMBER 2, 1947** - The first and only flight of Howard Hughes' "Spruce Goose" flying boat occurred in Long Beach Harbor, California. It flew about a mile at an altitude of 70 feet. Costing \$25 million, the 200-ton plywood eight-engine Hercules was the world's largest airplane, designed, built and flown by Hughes. It later became a tourist attraction alongside the Queen Mary ship at Long Beach and has since been moved to Oregon.



**NOVEMBER 2, 1929** Birthday: **Amar Bose** was a distinguished American entrepreneur and academic recognized for his mastery in electrical and sound engineering. He was a professor at the Massachusetts Institute of Technology for more than 45 years, imparting his expertise and motivating students. Bose established the Bose Corporation, a prominent audio equipment company, and in 2011, he generously allocated most of the company's shares to MIT to bolster the institution's educational and research initiatives. His remarkable contributions to the realms of engineering and business have left a lasting impact on both industries

**NOVEMBER 3, 1957** - Soviet Russia launched the world's first inhabited space capsule, Sputnik II, which carried a dog named "Laika."

**NOVEMBER 3, 1957** – Birthday: **Nick Holonyak Jr.**, an American engineer and educator, is recognized for inventing the semiconductor laser diode in 1962, a pivotal development that initiated the era of commercial LEDs. This innovative work was carried out during his time at a General Electric research laboratory in New York. Following his departure from GE in 1963, Holonyak joined the University of Illinois at Urbana-Champaign as a faculty member, later attaining the John Bardeen Endowed Chair in Electrical and Computer Engineering and Physics. His significant contributions have transformed the fields of optoelectronics and solid-state lighting technology

**NOVEMBER 4, 1890** - The first electrified underground railway system was officially opened in London.



**NOVEMBER 4, 1933** – Birthdate: - **Charles K. Kao** was a Chinese physicist and Nobel laureate recognized for his pioneering work in advancing fiber optics for telecommunications. His innovative methods combining glass fibers with lasers revolutionized the transmission of digital data, instrumental in the development of the Internet and the World Wide Web. Kao's foundational research at Standard Telecommunication Laboratories in Harlow set the stage for the widespread use of fiber optics. He furthered his studies in Hong Kong and the United States, earning the titles "godfather of broadband" and "father of fiber optics." Kao was honored with the Nobel Prize in Physics and knighted for his significant contributions to fiber

optic communications.

**NOVEMBER 8, 1895** - X-rays (electromagnetic rays) were discovered by Wilhelm Roentgen at the University of Wurzburg in Germany.

**NOVEMBER 8, 1656** - Birthday - Astronomer and mathematician **Edmund Halley** (1656-1742) was born in *London*. He sighted the Great Comet of 1682 (now named Halley's Comet) and foretold its reappearance in 1758. Halley's Comet appears once each generation with the average time between appearances being 76 years. It is expected to be visible again in 2061.



**NOVEMBER 8, 1923** - Birthday - **Jack St. Clair Kilby**, an American electrical engineer, was renowned for his groundbreaking contributions to the field of integrated circuits. He played a vital role in developing the first integrated circuit during his time at Texas Instruments in 1958. Kilby was also a co-inventor of the handheld calculator and the thermal printer, holding multiple patents for these inventions. His innovative work revolutionized the electronics industry, leading to his recognition with the Nobel Prize in Physics in 2000.



**NOVEMBER 9, 1965** - At 5:16 p.m., the Great Blackout of the Northeast began as a tripped circuit breaker at a power plant on the Niagara River caused a chain reaction sending power surges knocking out interconnected power companies down the East Coast. The blackout affected over 30 million persons, one-sixth of the entire U.S. population. Electricity also failed in Ontario and Quebec.

**NOVEMBER 9, 1790** - Birthday - German mathematician August Mobius (1790-1868) was born in *Schulpforte*, Germany. He worked in the area of analytic geometry and was a pioneer in topology, the study of geometric figures that remain constant even when twisted or distorted.

**NOVEMBER 18, 1883** - A Connecticut school teacher, Charles F. Dowd, proposed a uniform time zone plan for the U.S. consisting of four zones.

**NOVEMBER 18, 1789** - Birthday - Photography inventor Louis Daguerre (1789-1851) was born in *Cormeilles*, near Paris. In 1839, at a meeting of the French Academy of Sciences, he announced his daguerreotype process, the first practical photographic process that produced lasting pictures.

**NOVEMBER 18, 1889** - Birthday - American astronomer **Edwin Hubble** (1889-1953) was born in *Marshfield*, Missouri. He pioneered the concept of an expanding universe. The Hubble Space Telescope was named in his honor. It was deployed from the Space Shuttle Discovery in 1990, allowing astronomers to see farther into space than they had ever seen from telescopes on Earth.

**NOVEMBER 27, 1701** - **Anders Celsius** (1701-1744) was born in *Sweden*. He invented the centigrade (Celsius) temperature scale commonly used in Europe and most of the world follows the metric system.

**NOVEMBER 27, 1916** – Birthday of **Henry Earl Singleton** was a notable American electrical engineer and business executive who made significant contributions to aircraft inertial guidance. He co-founded Teledyne, Inc., a successful conglomerate, and served as its chief executive officer for thirty years. Singleton's leadership was instrumental in the company's growth and success. Additionally, he became one of the largest holders of ranchland in the United States, highlighting his diverse entrepreneurial pursuits.



**NOVEMBER 29, 1849** – Birthday of **John Ambrose Fleming**, an English electrical engineer and physicist, is renowned for inventing the first thermionic valve or vacuum tube. His notable achievements include designing the radio transmitter for the first transatlantic radio transmission and establishing the right-hand rule in physics. Additionally, he played a significant role in founding the Evolution Protest Movement. Fleming, a devout Christian, generously contributed a substantial portion of his estate to Christian charities, particularly those aiding the less fortunate. Beyond his scientific endeavors, he was known for his proficiency in photography, watercolor painting, and his passion for climbing the Alps

This continues the yearlong feature of interesting **engineering** events or milestones that occurred in a specific month. Readers are invited to share their views and opinions (or suggestions) at the accompanying link. Submissions can also be made using direct email to the editors at: [wavelengths@ieee-sem.org](mailto:wavelengths@ieee-sem.org).

**Sharan Kalwani**

2022-2024 Chair, Southeastern Michigan Section,  
Passionate Engineering History Buff/Aficionado

## Voting 2024

By now, all of our Technical Chapters and Affinity Groups in our section should by now have completed gathering candidates for each office, and be releasing their election ballots soon.

In addition to ballots for each of the Chapters where you have a Society related membership, you will also receive a ballot for election for our Section ExCom Chair-Elect and Vice-Chair-Elect. The 'Elect' officers will 'shadow' the current officers for one year and assume the full duties of their office on the following January.

Since many of our members maintain Society membership in several different technologies, it will not be unusual to receive requests to respond to more than one ballot during the election cycle.

Wavelengths maintain a current listing of all the Section Geo-unit Chapters and Affinity Groups which details the supporting Societies in each. When in doubt, please refer to that listing on page <<>>.

**Note:** Student Branches and HKN Chapters elect their officers on their individual schedules independently on their own schedule.

Direct questions to: [K.williams@ieee.org](mailto:K.williams@ieee.org)



## Life in Space:

I find it interesting to follow the announcements of media elements that report on current research areas and often I find some interesting parallels with the earlier thinking of the 'artists / authors' who write or wrote science fiction often decades earlier. A recent example caught my eye in 'Space.com':

*"In a recent pre-paper accepted for publication in the journal Astrobiology, researchers... by asking if it's possible to construct an environment that allows life to thrive without a planet."*

Back in 1983, the author Larry Niven saw astronomical evidence of a gas torus, a ring of air, around a neutron star. That year Astounding Science Fiction published his "The Integral Trees" as a serial. His earlier novel, the 1970 'Ringworld' was a first step beyond seeing a spherical planet as a place to 'host' life. Integral Trees went way beyond to explore how human society might evolve and change given a totally 'free fall' environment.

NASA is about to launch the 'Europa Clipper' spacecraft for a 5.5 year journey on a mission to investigate to the magnetic fields around that Jovian moon, as well as to evaluate the possibility of a sub-surface salt water environment that may host life. The flux variances in the Europa magnetic fields are heavily influenced by the rotating fields of Jupiter, and the subsequent heating effects may provide an environment conducive to life.

There have also been discussions about alternative biochemistry in which non-carbon bases life forms might 'breathe' methane or chlorine instead of oxygen. Some have considered possible life forms with a crystal basis that might house complex electromagnetic fields that comprise thinking processes. All these seem to harken back to earlier science fiction whether in book, in the movies or more recently on TV. (*Remember when TV was science fiction?*)

All this should tell us that life adapts. We have examples all around us of how our society adapts. Remember a few years back when there were proposals for a national identity card and the outcry from the ACLU about a system in which citizens could be 'tracked' by the government caused the plan to be abandoned. Now everyone I see carries at least one cell phone and parents 'track' the movements of their children to be sure they are 'safe'. How many people today would give up their cell phones in order to be 'invisible' to the government? If that level of change can happen to this planet in a few years, why should we be surprised at life, in general, adapting to almost any environment in a few millennia?

A follow-on question might be would we be able to communicate and cooperate with life forms so different from ourselves? Here there is cause for concern. At the present level of development our species can't even seem to effectively communicate and cooperate between different groups. Where we might be willing to make accommodations with different life forms, we resist modifying our behavior to allow for differences as minor as culture, belief, ancestry, or habit in our fellow humans on this planet. No wonder our planet seems intent on changing its environment to get humans to either leave, or die out.

Reflecting back to C.S. Lewis's novels; "Out of the Silent Planet," "Perelandra," and "That Hideous Strength", all predated his well known 'Narnia' books, may have influenced the thinking of James Lovelock who proposed the 'Gaia' concept of the earth as a living organization with inherent 'feedback' elements that regulate the environment. Contemporary 'Life Sciences' seem to support much of this theory and it is clear from human the experiments like 'Biosphere' that we really don't know enough ourselves to build a viable 'closed' environment as yet. I do know that we currently can produce enough food to feed the entire planet, and the ability to fly around the world in a few hours, yet we have people starving in many places.

The Rolling Stones line about 'he can't be a man cause he doesn't smoke the same cigarettes as me' comes to mind. If we maintain biases like that, how will we ever 'grow up' enough to deserve a planet like earth?

**Officer Job Training:****Officer Training**

We encourage members who are considering running for an officer position to take advantage of the 'Training Materials' available on the IEEE SEM Website at: <https://r4.ieee.org/sem/aboutsem/training/>

**FREE Voice over Power Point Training:** On-line virtual training modules are available through the SEM Website Training page. These videos will play directly and immediately from Google Chrome browser. They may not work well using Internet Explorer.

Turn OFF your pop up blocker if you don't see it load or download.  
Blank Titles (Links) are in development.

(If you wish to rewind sections and play again, we suggest you download the module to your computer and play it using your systems 'media player'.)

**Note:** If you are beginning training, we recommend starting with Module # 46: Virtual Training Plan, and follow its recommendations for the training sequence. Send Questions about these Training Modules to: [k.williams@ieee.org](mailto:k.williams@ieee.org)

30

***NOTE: SEM will present live officer training again in 2025!***

ESW 2024

# 22<sup>nd</sup> Annual Embedded Systems Workshop

November 16<sup>th</sup> 2024, 8:30 AM to 1:30 PM

IEEE Computer Society and IEEE Education Society (Southeastern Michigan Technical Chapters) are offering a workshop on Embedded Systems on Saturday, November 16<sup>th</sup>, 2024. This workshop is open to all industry professionals, both experienced and newly minted engineers, as well as students. This is the **22<sup>nd</sup> year** that the event is being held. The theme for this year is: “*Diverse/Novel Applications of Embedded Systems*”.

The aim is to disseminate knowledge, directly benefiting the IEEE members, at the same time **improve the technology skills pool, indirectly boosting the economy**. Speakers and experts from the embedded systems industry will be making presentations and will also be available for discussions and networking during the event. In addition to the technical presentations, there will be industry interaction and potential recruitment sessions. Use this opportunity for virtual networking with engineers, industry experts and embedded enthusiasts.

*Please confirm your participation by registering on the IEEE events web site*  
**Deadline is 15<sup>th</sup> NOVEMBER, 2024 9:00 AM**



**Speakers in the past: Beningo Embedded Group, Infineon, NVIDIA, Intrepid CS and others...**

**Attendees:** There is a small one-time cost of \$5 (IEEE members and students) to attend, this will help cover door prizes, video recording, storage, presentations, a dedicated website and other logistics. Several random raffles representing the embedded systems industry will also take place. All are welcome. Do post this flyer in your workplaces, share/inform your peers & colleagues about this event. It is a great way to learn not only what is going on, but also network (virtually) with other professionals as well.

*Brought to you by the IEEE SE Michigan Computer & Education Society chapters. Do seriously consider joining the IEEE, boost your technical skills, broaden your awareness of compute-based engineering in the region, support numerous similar initiatives & learn other benefits this brings.*  
*Open to all, Pre-registration is necessary for attending!*

<https://events.vtools.ieee.org/m/443658>

For Technical questions, contact the Program Committee at: [esw2024@ieee-sem.org](mailto:esw2024@ieee-sem.org)  
A CEU/PDH Certificate will be made available for participants who Pre-register and attend

**ESW 2024 Organizing Committee:** Subra Ganesan (Chair), Sharan Kalwani (Vice Chair), Ramesh Sethu, George Pappas

## Next Senior Elevation

### IEEE HQ Admission and Advancement (A&A) Review Panel Meeting Schedule

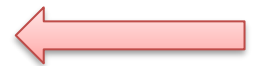
The Admission & Advancement (A&A) Review Panels meet six times annually to review applications and/or nominations for election or elevation to Senior Member (SM) or Life Senior Member (LSM) grade.

- The review panel meetings are held in various locations throughout the world.
- A panel of reviewers is recruited among Senior members, Life Senior members, and Fellows in the section where the meeting is to be held. This full-day session is presided over by the Admission and Advancement Chair and/or Vice Chair, as well as a representative of the Member and Geographic Activities staff.
- **In order for an application to be reviewed at the next Panel meeting, the application, resume, and required reference forms have to be submitted and received at least Seven days prior to the meeting date. [hence †] We have scheduled ours to be on November 9<sup>th</sup> – giving us enough time to fix any gaps, etc.**
- About two weeks following a review panel meeting, an update report with the names of the [newly elevated Senior members](#) is published and available for those who hold a volunteer position.

Review panel dates and locations (note: Dates and locations are subject to change without notice.)

*Please see Meeting Deadlines (Eastern Standard Time) below for more details.*

2024 Meeting Dates	Meeting Deadlines (Eastern Standard Time)
23 November 2024	11:59 p.m. on 16 November 2024



### 2024 IEEE HQ Panel Meeting Dates

†See our own Section organized event at: <https://events.vtools.ieee.org/m/422559> OR check the Section web site OR see page **XX**

## 2024 / 2025 SEM Officers

The **IEEE SEM Organizational Roster** is Located in the IEEE Southeastern Michigan website at:  
<http://sites.ieee.org/sem/>

Under the TAB titled “About SEM” use the button:  
“Organization Roster” to download the PDF version of the current Roster.

*(Note: It is also a good idea to download the Organization Org Chart as well in order to get the complete ‘big picture’ of the Section.)*

*(Note: To protect the members from getting spam email, the roster is password protected. Request access by sending email to our web master – Scott Lytle. )*

Years ago, we used to publish the complete Chart and Roster in the Newsletter. But that was when we had only 5 committees and 9 chapters.

Today we have 16 committees and sub-committees, 18 Technical Chapters, 4 Affinity Groups and 8 Student Branches. The total roster divides into 12 pages with 247 identified officer positions.

That seems like a large organization, and it is, but it also presents our members with many volunteer opportunities to grow their capabilities through the experience of working with leaders who can guide and nurture engineering talent and widen the scope of volunteering through ‘hands on’ training in those ‘soft skills’ that can only be mastered by ‘doing.’

We often refer to learning the non-technical side of an engineering career as similar to learning to play a musical instrument, or a sport, or how to dance. You can read all the books you want but, you only really learn by doing.

## Reading the Roster

Once downloaded notice that the roster is divided into five major segments:

- Executive Committee
- Standing Committees
- Affinity Groups
- Technical Chapters
- Student Branches

Within each segment you should find, at a minimum, the e-mail account for each officer, and in many cases, a work phone and a cell phone for quicker contact.

You may note a number of identified officer roles that have a blank cell (highlighted in yellow) where we would expect an officer name. These are vacant officer positions.

If you notice a vacancy where you might be interested in contributing to fill that role, please contact the relevant ‘Chair’ in that organization and discuss the duties of the office and consider helping out in that element.

As with all others, the road to this learning begins with the first step. That step is inquiring and finding out what skills go with each position. That information is maintained in the IEEE Center for Leadership Excellence at:

<https://ieee-elearning.org/CLE/>

Good luck!

## RoboFest News



- (1) [2025 Season Rules Released - Kickoff Meeting Dates](#)
- (2) [Fall UMC Scholarship Competition and Workshop for High School Students](#)
- (3) [Fall RoboParade in Clinton Township, Michigan](#)
- (4) [State of Michigan 99h Robotics Competition Grant returns for 2025 Robofest Season](#)
- (5) [Pre-season Workshop Schedule Announced](#)
- (6) [Seeking Site Hosts for Competitions](#)

Note: All times are listed in Eastern Time unless noted

### (1) 2025 Season Rules Released - Kickoff Meeting Dates

The Robofest 2025 Season International Rules were released on Saturday, September 28. Please join us as we review the rules and answer questions at an upcoming kickoff meeting. The US Rules (including clarifications and updates) will be uploaded in November.

The kickoff meeting schedule is as follows (Zoom Links are available on the Robofest.net 2025 Main Page):

**Thursday, November 7, 2024** 7:00 pm ~ 8:30 pm (Zoom only)

**Saturday, January 11, 2025** 10:00 am ~ 11:30 am (In person and Zoom)

### (2) Fall UMC Scholarship Competition and Workshop for High School Students

Robofest is hosting our 2<sup>nd</sup> Annual Unknown Mission Scholarship Challenge this fall for High School students to compete to win up to a \$17,000 Annual LTU Scholarship. Individual students will be challenged to build and program a robot kit to solve a task in a limited amount of time. The registration fee is \$25. Registration links and the 2024 UMC Scholarship Rules are on the UMC page: <https://www.robofest.net/index.php/current-competitions/unknown-mission-challenge>

**Competition: Sat, Nov 2, 2024**, 1:00 pm ~ 5:00 pm

At Lawrence Technological University, Computer Science Robotics Lab, J234

21000 West 10 Mile Road, Southfield Michigan 48075

Building No. 8 on the LTU campus map: <https://www.ltu.edu/about/map> Use parking lot E.

### (3) Fall RoboParade in Clinton Township, Michigan

Robofest is hosting RoboParade at the Macomb Intermediate School District (MISD) 44001 Garfield Rd, Clinton Twp., MI on **Saturday, November 16, 2024** 9:00 am ~ 1:00 pm. Teams of up to 5 students can build, program and decorate a robotic float in any theme related to fall (examples are Football, Back to School, Halloween, Thanksgiving, Pumpkin Spice). Registration is open. Rules and registration link can be found on the RoboParade page: <https://www.robofest.net/index.php/current-competitions/roboaparade>

### (4) State of Michigan 99h Robotics Competition Grant returns for 2025 Robofest Season

Robofest is an official program provider for the Michigan Department of Education 99h Robotics Competition Grant which provides funding to Public School Districts, Intermediate School Districts, and Nonpublic Schools to participate in Robofest. Grants for 2024-2025 teams (between \$500 and \$1,200) and Coach Stipends (between \$1,000 and \$1,500) will be available for Robofest teams that compete in the 2024-2025 season and are pre-registered in the Robofest Registration system by December 1, 2024 (Pre-registration is open for all categories). More information and detailed instructions will be posted on the Michigan Department of Education website: <https://www.michigan.gov/mde/services/financial-management/grants/oset-grants/99h---robotics>

### (5) Pre-season Workshop Schedule Announced

Workshops are available at no cost to registered 2025 Teams. They are held in the Computer Science Robotics Lab on LTU Campus, robots and laptops are provided. workshop materials will be made available on the eAcademy/Workshops page.

**LEGO EV3 with Scratch for Game**

Saturday, 1/25/25: 9:00 am ~ 12:00 noon



**LEGO SPIKE Prime/Robot Inventor with Scratch** for Game

Saturday, 1/25/25: 1:00 pm ~ 4:00 pm

**VEX IQ with VEXcode** for Game

Saturday, 2/1/25: 9:00 am ~ 12:00 noon

**LEGO EV3 with Scratch** Intro to Exhibition

Saturday, 2/1/25: 1:00 pm ~ 4:00 pm

Registration is open under “Available Workshops” on the registration page on Robofest.net  
<https://www.robofest.net/rms/SharedPagesServlet?cmd=getWorkshopsTable>

**(6) Seeking Site Hosts for Competitions**

We are seeking site hosts for the 2024-2025 Competition Season. In order to get your location on the pre-season promotional materials, US and International hosts must submit the application by November 20, 2024. Interested individuals, organizations, or schools should contact the Robofest office at [robofest@ltu.edu](mailto:robofest@ltu.edu) or visit <https://robofest.net/index.php/for-site-hosts> for more information or to download the application.

---

Lawrence Technological University / Robofest / J-233 / 21000 W. Ten Mile Rd, Southfield, MI 48075

Prof. Elmer Santos, Director, [esantos@ltu.edu](mailto:esantos@ltu.edu)

Shannan Palonis, Assistant Director, [spalonis@ltu.edu](mailto:spalonis@ltu.edu)

Pam Sparks, Coordinator, [psparks@ltu.edu](mailto:psparks@ltu.edu)

Dr. CJ Chung, Professor of Computer Science, Robofest Founder, Executive Council Chair, [cchung@ltu.edu](mailto:cchung@ltu.edu)

Dr. Chris Cartwright, Associate Professor of Math, Executive Council Member

Dr. Eric Martinson, Chair of Math & Computer Science Dept, Executive Council Member

<http://www.robofest.net>   <http://facebook.com/robofest>   <https://www.linkedin.com/company/robofest-official>

## 2025 Geo-unit Planning:

As we approach the end of 2024 this is the time to do some long-range planning for activities that would interest our members. For our Technical Chapters we generally try to focus on the primary technical interests of our supporting Societies, and that is good and proper. However, try to consider alternatives to engage your members in events that will bring everyone together in face-to-face meetings.

Since the global pandemic and the discovery of how convenient virtual meetings can be we have seen very few face-to-face meetings which means we don't get to meet each other in ways that allow us to know each other as people, not just images on a screen. We see this 'distance' in our difficulty in nominating members we 'know' for officer position in our elections, and in our social activities.

Yes, face-to-face meetings are more difficult to arrange, and often will cost some funds for a location, refreshments, a meal, etc... However, the depth of interactions and social engagement is substantially better than with virtual meetings. Recall that one of our Section goals is to increase member 'engagement', and that is best accomplished with in-person meetings. However, there are considerations that should be part of planning.

Michigan in the Winter is less conducive to meetings that require personal travel, and during the months when snow, cold rain and dreaded 'sleet' is likely to interfere with driving, this would be time to plan virtual meetings. However, late Spring, Summer and early Fall provide opportunities for outings to visit local engineering laboratories, attend in-person presentations, or arrange tours of local places of interest. (Have you ever had a tour of the baggage handling operation at a local airport, or a local museum with a special guide to discuss their engineering exhibits? How about a Chapter member picnic at a local park?)

These take more planning and funding than a virtual meeting but their level of engagement is so much greater that they are well worth the effort. But, they need to be planned, and if financial help is needed, the detailed plan with cost estimates needs to be presented to the Section Finance Committee (FinCom) in order to be approved and given its proper place in the Section's long-range financial plan.

If your Chapter or Affinity Group has met its minimum number of qualifying meetings (meetings focused on the interests of your members) then there will be funds sent to the Section earmarked for your Geo-unit as 'seed money' to help you get started with any events requiring at least some funding.

Each qualifying meeting must be reported in the vTools Event system and for Technical Chapters, the event type must be "Technical". For Affinity Groups, reported as either "Technical" or "Non-Technical" to qualify for 'Rebate' funds. The minimum is 2 meetings per year. For Geo-units with 6 or more meetings in the year, there is a 'bonus'.

Geo-unit	#Meetings	Rebate	Bonus (6+mtgs.)
Tech Chapter	2 Minimum	\$200	\$75
Affinity Group	2 Minimum	\$200	\$75

The 'Bonus' is not a lot of money but, it is there to encourage Geo-units to hold meetings to engage their members and create a "Professional Home" for all.

So, how do you gain access to the Rebate funds for your Geo-unit? For the minimum amount of the rebate your Chapter or Affinity Group has 'earned' through reported meetings in the past year, contact the Section FinCom, or go directly to the Section Treasurer. If you only require the funds your Geo-unit has earned through qualifying meeting, a simple request to the Treasurer is all that should be required.

If you are planning a meeting that needs more than minimum funding available through your rebate, create a planning document that describes the event and includes detailed cost estimates of all the factors needed to successfully complete the event. Submit your plan to the Finance Committee (FinCom) before one of its monthly meetings for consideration.

When planning for an event requiring funding, consider charging a nominal fee for attendees. This fee should not necessarily be calculated to completely 'cover' the total meeting cost, given the expected level of attendance. What a minimal fee does is improve the likelihood of members actually attending the event, instead of deciding to cancel at the last minute. Now they have some 'skin in the game' and are more likely to show up.

**Plan Ahead:**

At this time of year, the Section FinCom is beginning to assess the level of rebate expected for those Geo-units that have met, or exceeded, their meeting requirements and determining what the final year end financial status of the Section is likely to be.

The FinCom is also beginning to plan for the next year and expects to see requests for funding appropriate meetings from each of its Geo-units in order to begin long range planning for spending in the coming year. The long range spending plan is used to predict the financial state of the Section during an active year to be sure there are sufficient available funds to cover the known and planned expenses without deficit spending.

**Note:** That means that some events that are planned may not be funded, if the predictions show they cannot be covered with currently available funds including expected 'rebate' funding. This is also a caution that early long range planning by each Geo-unit is prudent if you hope to be approved.

**Committees:**

While the above advice is directed primarily to our Geo-units (Chapters and Affinity Groups) the same applies to each of our Standing Committees as well. Given the objectives and goals of each committee some will/should require funding to complete their work before the end of the year. Certainly, it should be the intention of each committee Chair to plan at least one 'Thank you' outing during the year for the members of the committee for all their work.

See the FinCom meeting schedule for the rest of 2024 elsewhere in this issue of Wavelengths and do your planning NOW!

**Pushing Limits:**

In the early 1940's our family lived in Wichita, Kansas while my father worked at the research center for the National Advisory Committee for Aeronautics, the NACA. (Later, NACA became the foundation for NASA, officially transitioning into the National Aeronautics and Space Administration in 1958.)

During the 'War Years' (WWII) our family kitchen table became one of the places where my father and his associates would gather to play chess, drink vast quantities of coffee and debate the question of the day; i.e. "Can we travel faster than sound?" The 'speed of sound' was the brick wall of the day, and not until October 14, 1947, when "Chuck" Yeager demolished that 'wall' did the question get laid to rest. Before that happened, one of my favorite places to 'hide' in our house was under that table listening to the conversations.

Before Captain Yeager's famous flight, the debate continued at our breakfast table. The questions revolved around as many factors as the fertile imaginations of those gentlemen could conceive. Was the limit only imposed by the energy capability of the current engine power plants? Would current airframe designs withstand the stress? Were earlier attempts destroyed by the 'shock wave' that built up at the nose of the vehicle?

The early automotive "limit" (claimed by alarmists of an earlier day) that traveling faster than 35 MPH would cause the passengers to die due to having the air sucked out of their lungs had been proven wrong. The Wright Brothers had shown that the mathematical 'proof' that heavier than aircraft could not fly had a few serious flaws. Experiential evidence suggested that at least some 'limits' were only imposed by our imagination.

Later in life, when security restrictions had been removed, my father related the experience at the NACA when the team received a large crate sent from England under strict security which contained a prototype of a

design for a turbine jet engine. A note from the engineers in England read; "Yanks: This one will run-on high-test petrol, crude oil or stale beer." I never found out of the engineers at NACA ever tried stale beer as a fuel but, everyone enjoyed the English dry sense humor.

These days, I try to follow what little is released about attempts to verify the implications of the equations of Dr. Miguel Alcubierre that suggest that 'faster than light' travel is possible by warping space-time. There is no kitchen table for me to hide under and listen to the discussion of how to push beyond our own 'self-imposed' limits. There seems to be no end of people willing to declare that such concepts are either in error, or 'only' Science Fiction. Still, in the face of loud opposition it is my hope that there are still some willing to step out and try the 'impossible', and eventually succeed.

If you have never seen the motion picture "La La Land", please do so and pay attention to the solo performance of "Fools who Dream".

*"She told me:  
A bit of madness is key  
To give us new colors to see  
Who knows where it will lead us?  
And that's why they need us,  
So bring on the rebels  
The ripples from pebbles  
The painters and poets, and plays*

*And here's to the fools who dream  
Crazy, as they may seem  
Here's to the hearts that break  
Here's to the mess we make"*

30

## ORG UNITS cheat sheet

**Section Unit Name or Affinity Group or Chapter Name (Organizational Unit code is in parentheses)**

Consultants Network Affinity Group:	(CN40035)
Life Members:	(LM40035)
Young Professionals:	(YP40035)
Women in Engineering:	(WE40035)
Chapter: 01 (CH04049) (SP01)	Signal Processing Society, (CAS04) Circuits and Systems Society and (IT12) Information Theory Society
Chapter: 02 (CH04051) (VT06)	Vehicular Technology Society
Chapter: 03 (CH04053) (AES10)	Aerospace and Electronic Systems Society and (COM19) Communications Society
Chapter: 04 (CH04050) (AP03)	Antennas and Propagation Society, (ED15) Electron Devices Society, (MTT17) Microwave Theory and Techniques Society,
Chapter: 05 (CH04055) (C16)	Computer Society
Chapter: 06 (CH04056) (GRS29)	Geosciences and Remote Sensing Society
Chapter: 07 (CH04057) (PE31)	Power Engineering Society, (IA34) Industrial Applications Society
Chapter: 08 (CH04088) (EMC27)	Electromagnetic Compatibility Society
Chapter: 09 (CH04087) (IE13)	Industrial Electronics Society, (PEL35) Power Electronics Society
Chapter: 10 (CH04142) (TEM14)	Technology and Engineering Management Society
Chapter: 11 (CH04099) (EMB18)	Engineering in Medicine & Biology
Chapter: 12 (CH04103) (CS23)	Control Systems Society
Chapter: 13 (CH04113) (E25)	Education Society
Chapter: 14 (CH04115) (RA24)	Robotics And Automation Society
Chapter: 15 (CH04144) (NPS05)	Nuclear Plasma Sciences Society
Chapter: 16 (CH04125) (CIS11)	Computational Intelligence Society, (SMC28) Systems, Man and Cybernetics Society
Chapter: 17 (CH04128) (NANO42)	Nanotechnology Council
Chapter: 18 (CH04162) (MAG33)	Magnetics Society

**Section Unit Name or Affinity Group or Chapter Name (Organizational Unit code is in parentheses)**

University Of Detroit-Mercy:	(STB00531)
Michigan State University:	(STB01111)
University Of Michigan-Ann Arbor:	(STB01121)
Wayne State University:	(STB02251)
Lawrence Technological University:	(STB03921)
Oakland University:	(STB06741)
Eastern Michigan University:	(STB11091)
University of Michigan-Dearborn:	(STB94911)

**Use the Geo-unit 'Codes'** (Shown above between brackets '(') for faster access in the vTools system applications.

**Example:** Using STB94911 in the vTools search window goes directly to the Student Branch.

Faster than typing 'University of Michigan-Dearborn'. This works for all Affinity Groups, Technical Chapters and Student Branches.

HKN Code	HKN Name (Student IEEE Honor Society)
HKN029	University of Michigan-Ann Arbor, Beta Epsilon
HKN042	University of Detroit-Mercy, Beta Sigma
HKN054	Michigan State University, Gamma Zeta
HKN073	Wayne State University, Delta Alpha
HKN163	University of Michigan-Dearborn, Theta Tau
HKN164	Lawrence Institute of Technology, Theta Upsilon
HKN190	Oakland University, Iota Chi
HKN244	Southeastern Michigan Alumni

Why do we publish this? Well, this is most useful when searching the vTools page for entering L31s or creating new events or searching for existing events!

**[NOTE – the Student Branch Chapters of several Societies has been eliminated, due to several years of non-activity as well as there is no one left, who started it years ago! ]**

**Curated & Maintained By**

**Sharan Kalwani,**

**Chair, IEEE Southeastern Michigan Section (2022-2024)**

**Editor, Wavelengths (Serving you as an active newsletter contributor since 2018)**

*Enthusiastic IEEE volunteer since 2011*

Use the Geo-unit 'Code' for faster access in the vTools system applications.



## Activities & Events

We try to publish IEEE events in several places to ensure that everyone who may want to attend has all the available relevant information. **NOTE: The IEEE SE Michigan section website is located at <http://r4.ieee.org/sem/>**

### SEM Wavelengths:

<https://r4.ieee.org/sem/about-sem/sem-history/wavelengths-magazine-archive/>

### SEM Calendar of events:

<https://r4.ieee.org/sem/sem-calendar/>

Select “SEM Calendar” button in the top row of the website. This is our ‘Active’ event listing site where everyone should look first to see what events are scheduled for our Section in the near future.

### SEM Collabratec Workspace:

<https://ieee-collabratec.ieee.org/app/workspaces/5979/IEEE-Southeastern-Michigan-Section/activities>

An IEEE supported space for online chat, discussions, connecting with other global IEEE entities, besides our local Michigan folks.

### vTools Meetings:

<http://sites.ieee.org/vtools/>

Select “Schedule a Meeting” button in the left-hand column of buttons.

## Other Happenings

Here are some of the non-IEEE functions that may be of interest to you or someone you know. Let us know if you have a special interest in a field that encourages technical study and learning and wish to share opportunities for participation with members of the section. **NOTE: Copy the URL and paste it into your browser address bar.**

These websites were checked in June 2022 and found viable.

Send details to: [wavelengths@ieee-sem.org](mailto:wavelengths@ieee-sem.org) OR [letters@ieee-sem.org](mailto:letters@ieee-sem.org)

.....

**Michigan Institute for Plasma Science and Engineering:** Seminars for the academic year:

<https://mipse.umich.edu/seminars.php>

**Model RC Aircraft**

<http://www.skymasters.org>

**Model Rocketry**

<https://www.nar.org/find-a-local-club/nar-club-locator/>

**Astronomy**

<http://www.go-astronomy.com/astro-clubs-state.php?State=MI>

**Experimental Aircraft Association**

<https://www.eaa.org/en/eea/eea-chapters/find-an-eea-chapter>

**Robots**

<https://www.robofest.net/index.php/about/contact-us>

**Science Fiction Conventions**

<https://2022.penguicon.org/>

<http://www.confusionsf.org/>

**Mad Science**

<http://www.madscience.org/>

**ESD PE Review Class**

<https://www.esd.org/programs/pe/>

**Maker Faire:**

<https://swm.makerfaire.com/>

It appears that the SouthWest Michigan Maker Faire was a casualty of the Global Pandemic, as were many of our friends and several organizations.

However, we retain this link for anyone wishing to make contact and consider pumping life back into what was a wonderful experience.

## Executive Committee

**The Executive Committee** is the primary coordination unit for Southeastern Michigan (SEM) IEEE operations. The basic organization chart below shows the current arrangement of communications links designed to provide inter-unit coordination and collaboration.

The SEM Executive Committee meets in a teleconference each month, usually on a Thursday at 6:30 pm. The specific meeting days, times, phone or WebEx numbers and log in codes are published on the IEEE SEM Website calendar: <http://r4.ieee.org/sem/> Click on the “Calendar” button in the top banner on the first page of the web site.

If you wish to attend, or just monitor the discussions, please contact **Christopher Johnson**, the section secretary at [secretary@ieee-sem.org](mailto:secretary@ieee-sem.org) and request to be placed on the distribution list for a monthly copy of the agenda and minutes. More meeting details are available on the next page of this newsletter.

### Other Meetings:

About half of our members maintain memberships in one or more of the IEEE technical societies, which automatically makes them members of the local chapter which is affiliated with that society. As a result, they should receive notices of the local chapter meetings each month.

However, members of the section may have multiple technical interests and would like to have meeting information of other chapters. In order to communicate the meeting dates of all the chapters, affinity groups etc., to our members to facilitate their attendance, leaders of the groups are requested to send meeting information to our webmasters for posting on section’s calendar.

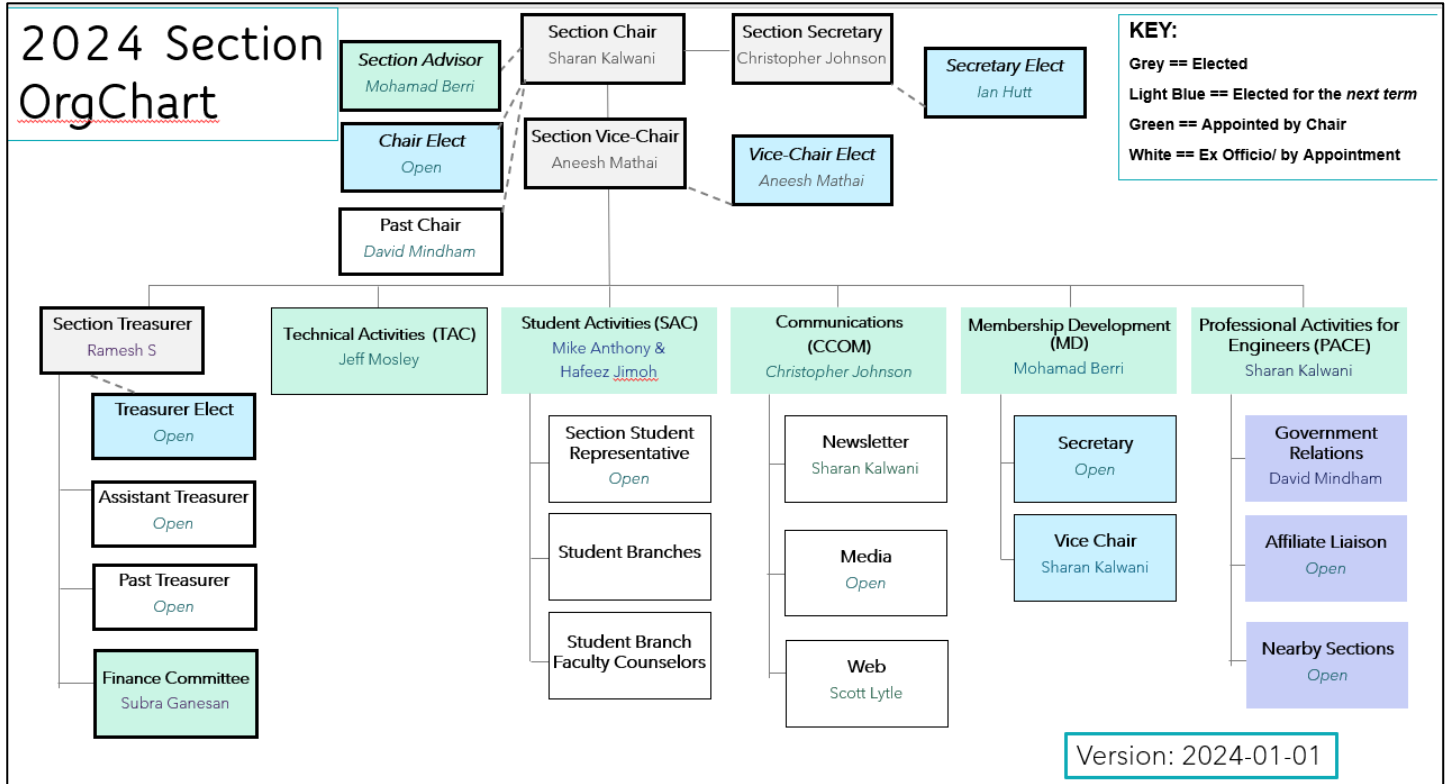
More detailed information on meetings may be found through the IEEE SEM Website: <http://r4.ieee.org/sem/> and clicking on the **SEM meetings list** button near the bottom of the left-hand banner.

Automatic e-mail notification of web updates may be received using the “**Email Notifications**” button at the top of the **SEM Tools/Links** side banner.

*Christopher Johnson (Secretary)*

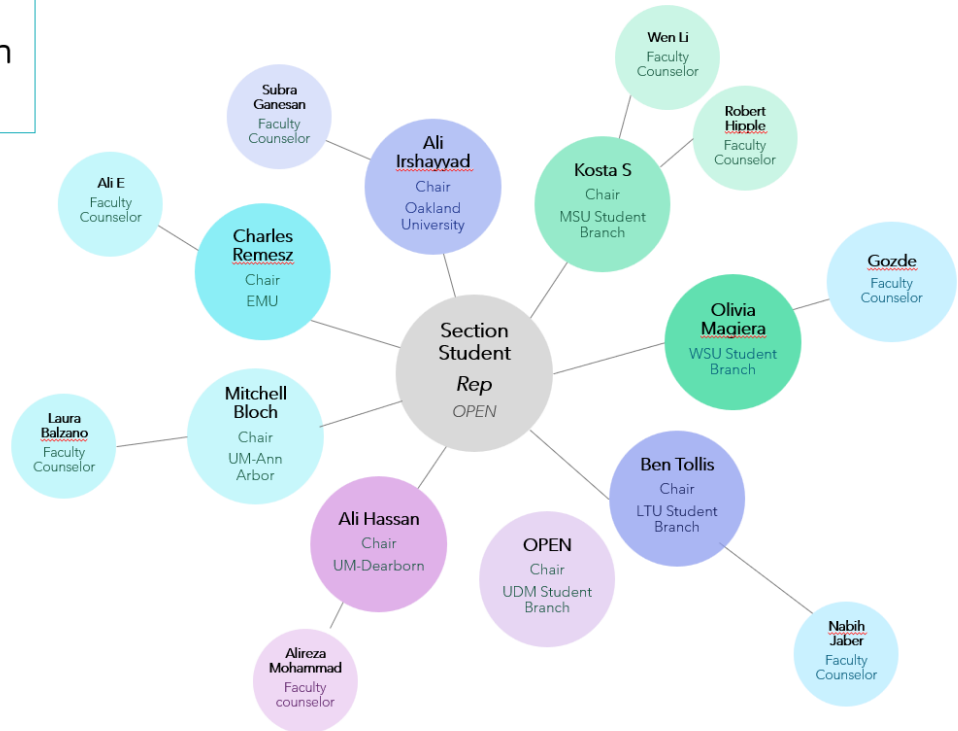
*Email: [secretary@ieee-sem.org](mailto:secretary@ieee-sem.org)*

If you wish to download the complete SEM Organization Chart, in PDF format, it will be made available soon at <http://r4.ieee.org/sem/>. In the meantime, you may use the diagram below (recently refreshed!)



### 2024 IEEE Southeastern Michigan Student Branches

Organization chart



## ExCom 2024 Meeting Schedule

**NOTE: All SEM members are invited to attend ALL ExCom (Executive Committee) meetings:**

Below is the 2024 schedule for the Section ExCom meetings with links to add the events to your calendar. It is important that **at least one person** from each Chapter/Affinity Group attends each scheduled ExCom meeting. Please mark your calendars for the 2024 meetings. Or link your personal calendar to the SEM Web calendar.

### Section Administrative Committee (ExCom) Meeting Schedule for 2024: (clickable links)

**Note:** All IEEE Members are welcome at any IEEE meeting, at any time but please register so we can be sure to accommodate you. This month's meeting is highlighted in **Bold**.

<i>ExCom Meeting (all clickable links)</i>	<i>Date &amp; Start Time, Duration</i>
<a href="#">Section ExCom Monthly Meeting (virtual) For NOVEMBER</a>	<b>14 Nov 6:30 PM, 1 hour</b>
<a href="#">Section ExCom Monthly Meeting (In Person) For DECEMBER</a>	12 Dec 6:30 PM, 2 hours

Christopher Johnson (Secretary)

Email: [secretary@ieee-sem.org](mailto:secretary@ieee-sem.org)

## Planned ExCom 2025 Meeting Schedule

### Section Administrative Committee (ExCom) Meeting Schedule for 2025

Title	Date	Hosts	Location	Virtual?
SEM Section ExCom Monthly Meeting (virtual) For JANUARY 2025 : Southeastern Michigan Section	09 Jan 2025 06:30 PM	R40035		Yes
SEM Section ExCom Monthly Meeting (virtual) For FEBRUARY 2025 : Southeastern Michigan Section	13 Feb 2025 06:30 PM	R40035		Yes
SEM Section ExCom Monthly Meeting (virtual) For MARCH 2025 : Southeastern Michigan Section	13 Mar 2025 06:30 PM	R40035		Yes
SEM Section ExCom Monthly Meeting (virtual) For APRIL 2025 : Southeastern Michigan Section	10 Apr 2025 06:30 PM	R40035		Yes
SEM Section ExCom Monthly Meeting (virtual) For MAY 2025 : Southeastern Michigan Section	08 May 2025 06:30 PM	R40035		Yes
SEM Section ExCom Monthly Meeting (virtual) For JUNE 2025 : Southeastern Michigan Section	12 Jun 2025 06:30 PM	R40035		Yes
SEM Section ExCom Monthly Meeting (virtual) For JULY 2025 : Southeastern Michigan Section	10 Jul 2025 06:30 PM	R40035		Yes
SEM Section ExCom Monthly Meeting (virtual) For AUGUST 2025 : Southeastern Michigan Section	14 Aug 2025 06:30 PM	R40035		Yes
SEM Section ExCom Monthly Meeting (virtual) For SEPTEMBER 2025 : Southeastern Michigan Section	11 Sep 2025 06:30 PM	R40035		Yes
SEM Section ExCom Monthly Meeting (virtual) For OCTOBER 2025 : Southeastern Michigan Section	09 Oct 2025 06:30 AM	R40035		Yes
SEM Section ExCom Monthly Meeting (virtual) For NOVEMBER 2025 : Southeastern Michigan Section	13 Nov 2025 06:30 PM	R40035		Yes

Finding Events : vtools

# SEARCH EVENTS


Learn how to integrate Event notices with your website  
Hey! I want the old Search page.

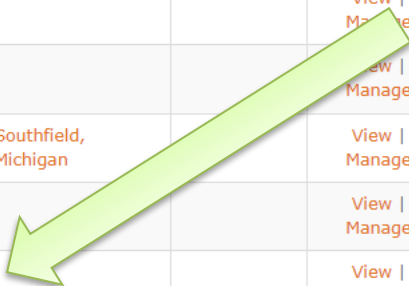
Search Options Advanced Search Clear Search

Search Term <sup>?</sup>  Organizational Unit <sup>?</sup>  - Date Range <sup>?</sup>  v

Search Download

Showing 6 of 6 upcoming events, based on search criteria.

Title	Date	Host	Location	Reported On	Options
<input checked="" type="checkbox"/> SEM Section ExCom Monthly Meeting (virtual) For JULY 2024	11 Jul 2024 06:30 PM	R40035			<a href="#">View</a>   <a href="#">Manage</a>
<input checked="" type="checkbox"/> SEM Section ExCom Monthly Meeting (virtual) For AUGUST 2024	08 Aug 2024 06:30 PM	R40035			<a href="#">View</a>   <a href="#">Manage</a>
<input checked="" type="checkbox"/> SEM Section ExCom Monthly Meeting (In Person) For SEPTEMBER 2024	12 Sep 2024 06:30 PM	R40035	Southfield, Michigan		<a href="#">View</a>   <a href="#">Manage</a>
<input checked="" type="checkbox"/> SEM Section ExCom Monthly Meeting (virtual) For OCTOBER 2024	10 Oct 2024 06:30 PM	R40035			<a href="#">View</a>   <a href="#">Manage</a>
<input checked="" type="checkbox"/> SEM Section ExCom Monthly Meeting (virtual) For NOVEMBER 2024 	14 Nov 2024 06:30 PM	R40035			<a href="#">View</a>   <a href="#">Manage</a>
<input checked="" type="checkbox"/> SEM Section ExCom Monthly Meeting (In Person) For DECEMBER 2024	12 Dec 2024 06:30 PM	R40035	Southfield, Michigan		<a href="#">View</a>   <a href="#">Manage</a>



**Editorial Corner**

Previous editions in this series may be found on the IEEE SEM website at: <http://r4.ieee.org/sem/>. Click on the “Wavelengths” button in the top row of selections.

Comments and suggestions may be sent to the editorial team at [wavelengths@ieee-sem.org](mailto:wavelengths@ieee-sem.org)

OR

[sharan.kalwani@ieee.org](mailto:sharan.kalwani@ieee.org)

[k.williams@ieee.org](mailto:k.williams@ieee.org)

[cjjohnson@ieee.org](mailto:cjjohnson@ieee.org)

[akio@emcsociety.org](mailto:akio@emcsociety.org)

We rely on our officers and members to provide the ‘copy’ that we finally present to readers of the newsletter.

The **Wavelengths Focus Plan and Personal Profiles** plan shown in the matrix below is presented to ensure coverage of section activities and events.

*We try to complete the newsletter layout a week before the first of the month to allow time for review and corrections. If you have an article or notice, please submit it two weeks before the first of the month or earlier if possible.*

The plan below relies on the contributions of our members and officers, so please do not be shy. If you have something that should be shared with the rest of the section, we want to give you that opportunity.

*We always encourage all chapters and student branches to share news of activities (both past and future) in their arenas. Please feel free to share any and all information so your peers, colleagues can hear about all the good work you do.*

Quote:

*“If a tree falls in a forest and no one hears it, how do you know it actually fell??”*

**So, publicize your work, one never knows when it can pay off!**

**Editors:**

We are always looking for members interested in helping to edit the newsletter. The process is always more fun with more people to share the duties. Having more participants and contributors also helps us keep the newsletter interesting.

**Join the Team:**

If you feel you might like to join the team, or would like to train with us, please contact one of us at:

[wavelengths@ieee-sem.org](mailto:wavelengths@ieee-sem.org)

**Sharan Kalwani,**  
**Chair, IEEE SE Michigan Education Society Chapter**  
**Vice-Chair, IEEE SE Michigan Computer Society Chapter**  
**Co-Editor, Wavelengths,**  
**2018~2019~2020~2021~2022-2023-2024**



*Wavelengths Annual Publication Plan for Articles*

Month	AG's	Ch's	Ch's	SB's	Special Notice	Reporting Events	Monthly Focus	Awards
Jan		1		OU	New Year Officers	Officer's Welcome	The Year Ahead	
Feb	Cons	2		MSU	Science Fair Judges	National Engrs Wk.	Surviving Winter	
Mar		3	13	EMU	Elections - Prep			
Apr		4		U/M-D		ESD Gold Awards	Chapter Focus	
May	Life	5	14			Science Fair		
Jun		6					Leadership Skills	
Jul		7	15				Students Issues	
Aug	WIE	8			Nominations Call		Womens Issues	
Sep		9	16	LTU	Ballots	Engineers Day?	Professional Skills	
Oct		10		U/M-AA	Elections!	IEEE Day		
Nov	YP	11	17	WSU	Election Results	New Fellows		
Dec		12		U/D-M	IEEE-Com Apmts.		Happy Holidays	R4 Nom

*Wavelengths Annual Publication Plan for Personal Profiles*

Month	Profiles	Profiles	Committees
Jan	Chair	New Officers	ExCom
Feb	Treasurer		Communications
Mar	Secretary		Conference
Apr	Stud-Rep		Education
May	V-Chair		Executive
Jun	Sect-Adviser		Finance
Jul	Sr Officers		Membership
Aug			Nominations
Sep			PACE
Oct			Student Activiies
Nov			Technical Activiies
Dec	Editor-WL		



## Web & Social Sites

### Southeastern Michigan Section Website

<http://r4.ieee.org/sem/>

Each of the sites below may be accessed through the Website:

#### Section Website Event Calendar

(Select the “SEM Calendar” button - top row)

#### SEM Facebook Page

(Select the “

<https://www.facebook.com/groups/ieeesemich>

#### SEM LinkedIn Page

(Select the “

<https://www.linkedin.com/groups/1766687/>

#### SEM Twitter Account (new)

(Select the “

<https://www.twitter.com/ieeesemich>

#### SEM Collabratec Community Page

<https://iee-collabratec.ieee.org/app/section/R40035/IEEE-Southeastern-Michigan-Section>

#### SEM Collabratec Workspace Page

<https://iee-collabratec.ieee.org/app/workspaces/5979/IEEE-Southeastern-Michigan-Section/activities>

#### SEM Instagram (new)

<https://www.instagram.com/ieeesemich/>

#### SEM Officers:

For a complete listing of all - Section - Standing Committee - Affinity Group - Chapter and Student Branch SEM Officers Roster on the web page (top banner)

#### Section Officers

##### Section Chair

Sharan Kalwani

##### Section Vice-Chair

Aneesh Mathai

##### Section Secretary

Christopher Johnson

##### Section Treasurer

Ramesh Sethu

#### Standing Committees:

##### Section Adviser

Mohamad Berri

##### Wavelengths Editor

Sharan Kalwani

##### Educational Committee

Anthony Will (Chair)

##### Finance Committee

Subra Ganesan (Chair)

##### Membership Development

Mohamad Berri (Chair)

##### Awards & Nominations

Jerry Song (Chair)

##### PACE

Sharan Kalwani (Chair)

##### Student Activities

Michael Anthony & Hafeez Jimoh (Co-Chairs)

##### Student Mentors

OPEN

##### SECTION Student Rep

OPEN

##### Technical Activities

Jeffrey Mosley

##### Information Mgmt. Coordinator

Kimball Williams



IEEE Southeastern Michigan

Visit Us on the Web at:  
<http://r4.ieee.org/sem>

The formula to  
measure the area  
of a pun is  
length times wit.

### Advertising Rates

SEM Website & Newsletter

### Leadership Meetings

#### SEM Executive Committee Monthly Teleconferences:

- 2<sup>nd</sup> Thursday of Each Month @ 6:30 PM
- Check the Section Web Calendar at:  
<http://r4.ieee.org/sem/sem-calendar/>  
(Select the “SEM Calendar” button in the top row.)

OR

#### SEM Executive Committee Meetings:

- Find the location, and Registration at:  
<http://bit.ly/sem-ieee>

SEM Standing Committee Meetings:

SEM Affinity Group Meetings:

SEM Technical Society/Chapter Meetings:

SEM University Student Branch Meetings:

- Meeting schedules are announced on SEM Calendar  
<http://r4.ieee.org/sem/>  
(Select the “SEM Calendar” button in the top row.)

- Registration for all at:

<http://bit.ly/sem-upcoming>