

Wavelengths



Volume 58 – Issue 11

Contents

Fall Conference	1
Section Chair's Message	2
Results Election 2018	3
Volunteer Portal	4
Professional Headshots	5
Member Meet & Greet	6
Mentor Future Cities	7
ZF Employment Ad	8
Chapter 5 Report	9
IEEE Day PES/IAS	10
IEEE Day Students	11
Section Matters	12
Section Focus	12
ORG UNITS cheat sheet	13
Non-IEEE Events	14
Executive Committee	15
ExCom Meeting Schedule	16
Editor's Corner	17
Section Officers	19
Web & Social Sites	19
Advertising Rates	20
Leadership Meetings	20

Fall Conference



Photo by Andy Kelly on Unsplash

FALL CONFERENCE - SATURDAY, NOVEMBER 3 SCHOOLCRAFT COLLEGE

YOU ARE INVITED!

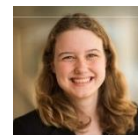
Registration is Required and Spots are Limited
Register [Here!](#)

Imagine the Future: Developing AI

KEYNOTE ADDRESS



The Ups and Downs of Word Embeddings



[Rada Mihalcea, Ph.D.](#) and [Laura Wendlandt](#)

Electrical Engineering and Computer Science, University of Michigan
Words are the central units of the languages we all speak. In a similar way, word representations are the core units of algorithms that we build to automatically process language. These representations form the foundation for many applications of natural language processing, ranging from question answering systems, to chat bots, search engines, or systems for machine translation. Dr. Mihalcea and Laura Wendlandt (Ph.D. candidate) will take a deep dive into word embeddings – a popular way of representing words with the help of neural networks trained on very large collections of texts.

ALSO FEATURING:

- [Veronica Perez-Rosas](#), "Automatic Detection of Fake News"
- [Sharan Kalwani](#), "Symbiotic Relationship and Growth of Computing and Perceived Intelligence"
- [Aisha Yousuf](#), "Building Blocks for a Successful Data Science Group"
- [Robert Neff](#), "AI in Autonomous Vehicles"

**Big Thank You to
Our Sponsor!**
[VisTaTech](#)



Section Chair's Message



Welcome to the new format for our Wavelengths newsletter. Our editor, Sharan Kalwani and his staff have been hard at work determining a design that will appeal to and inform our readers. Yes, my message moves to page 2, but that's probably a good thing. My future message each month shall be on Section matters rather than highlighting topics in the newsletter.

Section Award:



2018 Outstanding Section Membership
Recruitment and Retention Performance
Southeastern Michigan Section

Our SEM Section has been selected for the IEEE 2018 Outstanding Section Membership Recruitment and Retention Performance award for meeting both our section membership recruitment and member retention goals this year. Congratulations to the Membership team lead by Irina Sullivan and Amanda Mohan. Our entire section membership should also be congratulated for demonstrating and promoting the values of IEEE membership.

Welcome to those of you who are new to IEEE and new to SEM Section. Please visit our website

(www.ieee-sem.org) for information about upcoming events and Chapter meetings. Our section Organization Chart and Officer Roster can be found by clicking on the "About" tab. If you have questions, suggestions and especially if want to get involved reach out to either our Chapter or Section officers.

To those of you who continue to renew your long-time membership, thank you for your support, invaluable time and expertise in advancing the goals, needs and ideals of our profession. You are recruiting by example.

Election Results:

Congratulations to David Mindham as Section Chair Elect and Sharan Kalwani as Section Vice Chair Elect for 2019. On January 1, 2020 these gentlemen will become Chair and Vice Chair of SEM Section for the term 2020 through 2021 calendar years and I will become Past Chair and assume the role of advisor. Chapter and Affinity Group Officers will be announced soon.

2018 Budget:

The Financial Committee along with SEM officers have begun work on the Proposed 2019 Section Budget. The plan is to distribute the proposed budget to the ExCom prior to the November 7 ExCom WebEx meeting. An updated version, based on inputs from the ExCom, will be considered at the December ExCom meeting. A Final Budget will be presented for approval shortly thereafter.

I look forward to hearing from you and seeing you at our events. As always, your ideas and suggestions are encouraged and welcome.

Robert Neff
IEEE SEM Section Chair
RLNeff1@gmail.com

Results Election 2018

2018 SEM Officer Election results!

Officer elections have concluded and the Nominations and Appointments committee is now in the process of verifying the results and confirming that "Write-In" candidates are aware of their selection, and that all are willing to serve. (Some are nominated by their friends and do not know they have 'won' an election post!)

Note: By MGA rules, officers not replaced by election or appointment continue to hold the office in which they were last posted.

So, from the 10,000 foot view, how did we do? Below I have listed the % of members in each Geo-unit that voted in this election. The % number shows the % for each Geo-unit, not the absolute number of votes cast. Overall, the average voting level in the Section for all units, including the Executive Committee posts saw 5% of our members cast their ballot for one or more officers.

From a management point of view the voting level provides a second indication of the overall 'health' of each Geo-unit, and the degree how well the current officers have managed to 'engage' their members during the year.

The first level of Geo-unit health is gaged by the number and type of activities each provides for its members.

Executive Committee

'officer-'elect' positions.

This year for Chair and Vice-Chair 'Elect'. 4%

Affinity Groups:

Consultants:	21%
Life Members:	5%
WIE:	8%
YP:	1%

Technical Chapters:

Ch01	4%
Ch02	9%
Ch03	3%
Ch04	10%
Ch05	6%
Ch06	17%
Ch07	9%
Ch08	10%
Ch09	0%
Ch10	32%
Ch11	4%
Ch12	3%

Ch13	12%
Ch14	7%
Ch15	6%
Ch6	6%
Ch17	12%

Note: Student Branches and HKN Chapters hold their own, independent elections.

So, what's next?

The 'raw data' from the election has been delivered to all the officers in the Section, and now we begin the process of separating out 'write-in' candidates who may be totally unaware that someone placed their names into an officer candidate position, and reconciling conditions where more than one officer received the same number of votes for a single office.

This process usually requires a couple of weeks to sort out, then a final proposed Organizational Roster can be compiled and delivered to the ExCom for final review at their December meeting. This year we are trying to have the preliminary 2019 organization roster available for the November SEM ExCom teleconference on November 7th.

In the meantime, expect to see lots of 'calls' for volunteers to fill vacant slots in our Standing Committees, and Geo-unit officer positions as we sift through the data and discuss the future plans with all the candidates.

K.williams@ieee.org

Chair: N&A Committee.

Officer Training

The Technical Activities Committee (TACom) plans a series of Officer Training events to cover the skills needed by our SEM Officers. These are in the early planning stage. More on these training events will be sent to all officers as the schedule solidifies. Look for announcements in the Wavelengths and e-Wavelengths newsletters.

.....meanwhile.....

Voice over Power Point Training:

Many on-line virtual training modules are available through the SEM Website [Training page](http://r4.ieee.org/sem/about-sem/training/) at:
<http://r4.ieee.org/sem/about-sem/training/>

Volunteer Portal

Non-Elected Geo-Unit Positions:

While we elect our basic officers (Chair, Vice-Chair, Secretary, Treasurer), many geo-units utilize the talents and energy of 'appointed' volunteers. For these positions, contact the Chair of the particular geo-unit, and discuss the opportunities. Alternatively, look at the article on the following page about the new Volunteer Portal, which may be a more comfortable.

Note: Chairs of all Geo-units and Standing Committees have full authority to appoint (or remove) appointed volunteers on their staff.

Nominations and Appointments Committee (N&ACom) supports a [Google Form](#) designed to identify volunteer opportunities available at all levels of our Section, including:

- Executive Committee,
- Standing Committees,
- Affinity Groups,
- Technical Chapters, and
- Student Branches.

The tasks and volunteer needs within our organization change with time, and it is not unusual for these tasks to require more time and energy than one elected or appointed officer can handle alone. When we find ourselves in that situation, we reach out to our members for assistance.

From Officers to Members:

With the help from our officers, the new Volunteer Portal will become a central depository for all our volunteer needs easily accessible to all members. This site will feature links to details for each volunteering opportunity being advertised, including estimated time commitment, a detailed job description, where applicable, and the name of the geo-unit and officer requesting the assistance along with pertinent contact information.

You can view a preliminary version of the Portal at:

<http://r4.ieee.org/sem/about-sem/volunteer-portal/>

Currently there are about 20 vacant positions for consideration and we encourage all members to view them and select those that may help them grow in knowledge and experience through volunteering.

The Portal will be a 'one stop shop' for all members interested in volunteering with any of the SEM organizations. And each potential volunteer can select those opportunities that look most interesting to them and contact the particular officer seeking help to discuss the opportunity in more detail.

Note: While elected officer positions require membership level above the Student level, as well as, membership within the geo-unit, neither of those restrictions apply to appointed volunteer positions. This means that a volunteer position obtained through the Portal may be a great introduction to operations of a particular geo-unit and its management team.

Web Site Access:

The new Volunteer Portal is now accessible and shows a small selection of volunteering opportunities currently available with SEM. We expect that new opportunities will be added as the officers seeking help enter them into the system.

We hope that our members will find Volunteer Portal helpful in becoming actively engaged with the local IEEE organization that interest them and will give them the experience to grow new talents and skills.

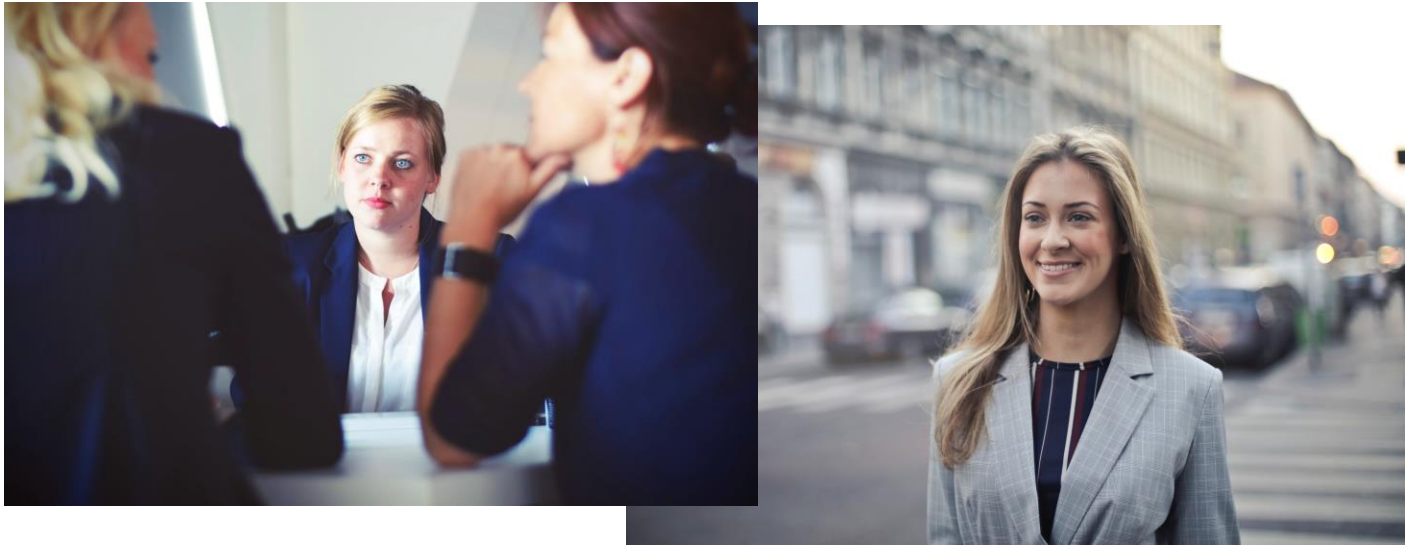
IEEE SEM Geo-Unit Officers, Committee Chairs, etc. have been asked to fill in the Volunteer Survey form in order to populate the Volunteer Portal with the positions information about the area where you need volunteer help, or to replace vacant positions in their Administrative Committees.

SEM Officers may find the form at:

https://drive.google.com/open?id=1DAyfMNizv4W0lh_hwlsKKvvIPGNLHexoEi99FFmhnile

kw

Professional Headshots



**IEEE SOUTHEASTERN MICHIGAN WOMEN IN ENGINEERING +
SOCIETY OF WOMEN ENGINEERS DETROIT SECTION**

SATURDAY, NOV. 10 10AM-2PM

CONTINENTAL @ AUBURN HILLS

PROFESSIONAL HEADSHOTS EVENT

WIE/SWE Student Members \$5 • WIE/SWE Professionals \$10*

***All event proceeds will be donated to SWE-Detroit Scholarships Fund**

PLUS PERSONAL BRAND AND IMAGE WORKSHOPS

LED BY A CERTIFIED CORPORATE AND PERSONAL BRANDING CONSULTANT

****ADVANCED REGISTRATION REQUIRED** SPOTS ARE LIMITED****

REGISTER HERE: <https://formsmarts.com/form/1znv?mode=h5>

Member Meet & Greet

Who doesn't like some quality time at the Henry Ford Museum to visit with their fellow IEEE members and their families?

Member Meet & Greet Event



**Sunday, November 11
2:30PM-4PM
Henry Ford Museum
20900 Oakwood Blvd, Dearborn**

**Please join us for an
INFORMAL networking event!
Member & family meet and
greet will take place at
Henry Ford with an optional
participation in a behind-
the-scenes tour led by the**

Museum docent.

Everyone pays for themselves.

Please pay at the door to get entrance to the museum.

Cost: \$23/adult, \$21/senior (62+), \$17.25/youth (5-11).

OPTIONAL: The 90-min tour will cost the group a flat fee of \$150 in addition to the admission fee. Please bring cash to pay your portion, e.g., for 20 attendees cost would be \$7.50 per person.

More information and registration details: [here](#).

****REGISTRATION IS HIGHLY RECOMMENDED****

Please register so we know who and how many to expect.

**So, grab your spouse, kids, friends, and neighbors, and
we look forward to seeing you there!**

Mentor Future Cities

MICHIGAN REGIONAL FUTURE CITY COMPETITION

INSPIRE THE FUTURE.

The Michigan Regional Future City Competition is not just another school requirement. It goes beyond the classroom to inspire 6th, 7th and 8th grade students and nurture their interest in math, science, engineering and technology.



Volunteer mentors are an integral part of this rewarding and hands-on experience. Students learn how engineers turn ideas into reality and apply their knowledge to real world situations.

As a mentor, giving a few hours of your time could mean a lifelong interest and even commitment to core academic subjects. Throughout the Future City Competition, engineer mentors work with student teams as they design and build their city of the future. Your commitment entails:

- 1 Spending one or two hours every week or every other week with your team.
- 2 Sharing your technical expertise with participants- (Mentors must have a technical background sufficient to understand the project and coach the team).
- 3 Working with your students to help them harness their enthusiasm and channel their ideas into a coherent city.

Students must do all of the actual work from designing of the city on the computer to writing an essay, building a physical tabletop model and giving a verbal presentation.

***MENTORING THE NEXT GENERATION
OF ENGINEERS AND SCIENTISTS
IS TRULY A REWARDING EXPERIENCE.***

The Engineering Society of Detroit matches engineers with school teams. Interested engineers can volunteer by contacting Allison Marrs at **248-353-0735, ext. 121** or **amarrs@esd.org** or by visiting **<http://futurecity.org/getinvolved>**



THE ENGINEERING SOCIETY OF DETROIT®
FOUNDED IN 1895

WWW.ESD.ORG

ZF Employment Ad





WHAT'S NEXT?

JOIN ZF

WORK AT THE FOREFRONT OF
AUTOMOTIVE INNOVATION WITH ZF,
ONE OF THE WORLD'S LEADING
AUTOMOTIVE SUPPLIERS.

ZF.COM/CAREERS

Chapter 5 Report

FYI

We had three technical meeting events in October 2018. On 3rd October, Chapter 5 along with the Oakland University Student Branch, did an event on the history of computing in the automotive vehicle. It was held in room MSC 187 (Math & Science Building) at 5pm. The talk did a historical trace of the use of ECUs, Infotainment, V2X and autonomous systems. The parting theme of the talk was the anticipated data deluge and issues with software in vehicles.

The second event was a celebration of Hedy Lamarr. Some of you may know her as an actress, but among a few serious folks of engineering history (including yours truly) she is a legend, as she invented, and later patented, a spectrum and frequency hopping technique during WWII and that is now used to provide WiFi, cellular, Bluetooth, satellite communications, and similar technologies. In this celebration we screened a documentary originally aired on PBS followed by a discussion. Of course, true to the cinematic experience we had soda pop, pizza and popcorn.

The third event was a talk by PhD candidate – Ahmad Mansour - on Security in Ad Hoc Vehicle Networks which took place on October 17th. It was well-attended as network security is utmost in our minds these days.

Of course, the biggest major event in October was the Embedded Systems Workshop, which is it's 16th edition. A separate report is still being compiled and will appear in the next issue of Wavelengths.

Sharan Kalwani

Editor, Wavelengths,

Vice-Chair, Chapter 5 (Computer Society), Chair, Chapter 13 (Education Society) and PACE

Passionate Engineering History Buff/Aficionado

IEEE Day PES/IAS

IEEE DAY2018 celebration in Jackson, held on October 2nd, was a simple and yet an exciting event. We had around 15 guests attending this celebration. The event was held at a brewery so that guests could enjoy the fine locally brewed beer and delicious food platters. The purpose of this celebration was to spread some awareness about IEEE and its history. To achieve this aim, we had a trivia quiz on IEEE for our guests. Followed by the quiz we played a video clip on IEEE structure and its foundation. The celebration concluded with a cake cutting ceremony. We also had slides that ran through the event, featuring some IEEE information from around the world. The support of the people who were not a part of IEEE added zeal to this event. The event would not have been successful without the participation from everyone.



Group Photo and Kimball cutting the cake!

Chaitali Naik

Electrical Engineer-Electrical Systems Engineering
Commonwealth Associates

IEEE Day Students



On October 4th, IEEE Region 4 Student Activities, IEEE – Southeastern Michigan Section, and IEEE Student Branch at the University of Michigan hosted an IEEE Day Celebration at Pierpont Commons located on the North Campus of the University of Michigan.



What is IEEE Day? Well it is the day where we are celebrating the first time in history when engineers worldwide and IEEE members gathered to share their technical ideas in 1884.

This year the IEEE Day's theme is: "Leveraging Technology for a Better Tomorrow". While the world benefits from what's new, IEEE focuses on what's next. IEEE Day 2018 is the 9th edition of the same and will be celebrated on 2nd October 2018.

For almost three hours, over 70 IEEE members and students mingled with great buffet of BBQ items. We had a wide range of individuals from Ohio, Indiana, and Michigan attend the event. We had students from Central Michigan and University of Michigan – Dearborn as well as representatives from Eastern Michigan University as well. Students had opportunities to talk and network and potentially get internships and jobs!



We look forward to doing this again next year and hope to see more people next year!

Special thanks to the following individuals: Linda Gong, Nevi Kaja, Kristen MacCartney, Kayura Mendoza, Amanda Mohan, and Irina Sullivan.

Thanks to the University of Michigan IEEE student branch leaders as well as the University of Michigan for the great location and the delicious food.

Mel Chi

Chair Student Activities

Section Matters

Joint Chapter Meetings: A Painless Way to Keep Current

Engineering, as are most disciplines in the world, is evolving. Electrical engineering is evolving very rapidly. How many of today's EEs know the function of a suppressor grid or the task of a 6SN7? Software was the domain of mathematicians and the occasional scientist. Solid state was the domain of physicists and chemists. The challenge for today's engineer is to stay apace with rapid technological advancements..

IEEE has Sections that focus on EEs staying current in their field and exploring other areas through a variety of ways, including conferences, meetings and courses. IEEE SEM has all of these available. Since there is a finite amount of time to attend meetings, conferences and take courses, the challenge is to become more efficient in staying current and expanding one's networks of contacts and interests. Holding joint meetings with other Chapters is an easy solution. Joint Chapter meetings lighten the administrative burden while reducing the cost for each Chapter. A joint meeting can allow exploration of an area that is a complimentary field of interest, or is one you always wanted to know about. What better way to do this than by having a joint meeting?

Chapter officers should contact one (or more) of their fellow Chapter officers to explore scheduling a joint meeting. Chapter members should let their officers know which Chapters they would like to join with for a meeting. Joint meetings are easy, reduce administrative burden and expenses, and can even be fun. Joint meetings are a painless way to expand everyone's horizon.

Joe Giachino

Section Focus

The IEEE SEM Section Officers have reaffirmed the Mission and Goals of the section with the guidance of the Region 4 leadership. The Mission and Goals conform to those of IEEE worldwide.

You have probably seen the Mission and Goals before. However, it is important to keep these clearly in mind and remind ourselves often that this is what we are about and what we are trying to accomplish.

Section Mission

Inspire – Enable – Empower and Engage Members of IEEE at the local level.

For the purpose of:

- Fulfilling the mission of IEEE to foster technological innovation and excellence for the benefit of humanity,
- Enhancing the members' growth and development throughout their life cycle, and
- Providing a professional home,

Section Goals

- Increase member engagement,
- Improve relationships with and among members,
- Increase operational efficiency and effectiveness, within the section and its interfaces,
- Enhance collaboration – serve as the local face of IEEE to the community,
- Increase membership, and
- Ensure the collection of appropriate information necessary to assist the IEEE to become a data driven organization.

It is now the task of the section leadership to guide and coach all section officers and elements to focus their activities on achieving those goals

ORG UNITS cheat sheet**Section Unit Name or Affinity Group or Chapter Name (Organizational Unit is in parentheses)**

Consultants Network Affinity Group: (CN40035)

Life Members:

Young Professionals:

Women in Engineering:

Chapter: 01 (SP01) Signal Processing Society,
(CAS04) Circuits and Systems Society and
(IT12) Information Theory Society

Chapter: 02 (VT06) Vehicular Technology Society

Chapter: 03 (AES10) Aerospace and Electronic Systems Society and
(COM19) Communications Society

Chapter: 04 "Trident" (AP03) Antennas and Propagation Society,
(ED15) Electron Devices Society,
(MTT17) Microwave Theory and Techniques Society,

Chapter: 05 "Computer" (C16) Computer Society

Chapter: 06 (GRS29) Geosciences and Remote Sensing Society

Chapter: 07 (PE31) Power Engineering Society,
(IA34) Industrial Applications Society

Chapter: 08 "EMC" (EMC27) Electromagnetic Compatibility Society

Chapter: 09 (IE13) Industrial Electronics Society,
(PEL35) Power Electronics Society

Chapter: 10 (TEM14) Technology and Engineering Management Society

Chapter: 11 (EMB18) Engineering in Medicine & Biology

Chapter: 12 (CS23) Control Systems Society

Chapter: 13 (E25) Education Society

Chapter: 14 (RA24) Robotics And Automation Society

Chapter: 15 (NPS05) Nuclear Plasma Sciences Society

Chapter: 16 (CIS11) Computational Intelligence Society,
(SMC28) Systems, Man and Cybernetics Society

Chapter: 17 (NANO42) Nanotechnology Council

Section Unit Name or Affinity Group or Chapter Name (Organizational Unit is in parentheses)

University Of Detroit-Mercy: (STB00531)

Michigan State University: (STB01111)

University Of Michigan-Ann Arbor: (STB01121)

Wayne State University: (STB02251)

Lawrence Technological University: (STB03921)

Oakland University: (STB06741)

Eastern Michigan University: (STB11091)

University of Michigan-Dearborn: (STB94911)

Curated & Formatted By

Sharan Kalwani,
Editor, Wavelengths,
2017-2018

Non-IEEE Events

We try to publish IEEE events in several places to ensure that everyone who may want to attend has all the available relevant information. **NOTE: The IEEE SE Michigan section website is changing to its new home, kindly make a note of it! The new home is located at <http://r4.ieee.org/sem/>.** The old links will continue to work for sometime, but will be changing permanently in the near future.

SEM e-Wavelengths:

www.e-wavelengths.org

This is our 'Active' event listing site where everyone should look first to see what events are scheduled for our Section in the near future.

SEM Web Calendar:

<http://r4.ieee.org/sem/>

Select "SEM Calendar" button in the top row of the website.

SEM Web Meetings:

<http://r4.ieee.org/sem/>

Select "SEM Meeting List" button in the left-hand column.

vTools Meetings:

<http://sites.ieee.org/vtools/>

Select "Schedule a Meeting" button in the left-hand column of buttons.

Other IEEE Local Meetings:

<http://www.e-wavelengths.org/>

Other Happenings

Here are some of the non-IEEE events that may be of interest to you or someone you know. Let us know if you have a special interest in a field that encourages technical study and learning, and wish to share opportunities for participation with members of the section.

Send details to: wavelengths@ieee-sem.org

Michigan Institute for Plasma Science and Engineering: Seminars for the 2017-2018 academic year: <http://mipse.umich.edu/seminars.php>

Model RC Aircraft
<http://www.skymasters.org/>

Model Rocketry
<http://team1.org/>

Astronomy
<http://www.go-astronomy.com/astro-clubs-state.php?State=MI>

Experimental Aircraft Association
<https://www.eaa.org/en/ea/ea-chapters/find-an-eaa-chapter>

Robots
<http://www.therobotgarage.com/about-us.html>

Science Fiction Conventions
<https://2019.penguicon.org/>

<http://www.confusionsf.org/>

Mad Science
<http://www.madscience.org/>

ESD PE Review Class
<https://www.esd.org/programs/pe/>

Maker Faire:
<https://swm.makerfaire.com/>

Executive Committee

The **SEM Executive Committee** is the primary coordination unit for Southeastern Michigan (SEM) IEEE operations. The basic organization chart below shows the 2018 arrangement of communications links designed to provide inter-unit coordination and collaboration.

The SEM Executive Committee meets in a teleconference each month on either the first Wednesday or first Thursday at noon. The specific meeting days, times, phone or WebEx numbers and log in codes are published on the IEEE SEM Website calendar: <http://r4.ieee.org/sem/> Click on the “Calendar” button in the top banner on the first page of the web site.

If you wish to attend, or just monitor the discussions, please contact Eric George, the section secretary at: eric.george.us@ieee.org and request to be placed on the distribution list for a monthly copy of the agenda and minutes.

More meeting details are available on the next page of this newsletter.

Other Meetings:

About half of our members maintain memberships in one or more of the IEEE technical societies, which automatically makes them members of the local chapter which is affiliated with that society. As a result, they should receive notices of the local chapter meetings each month.

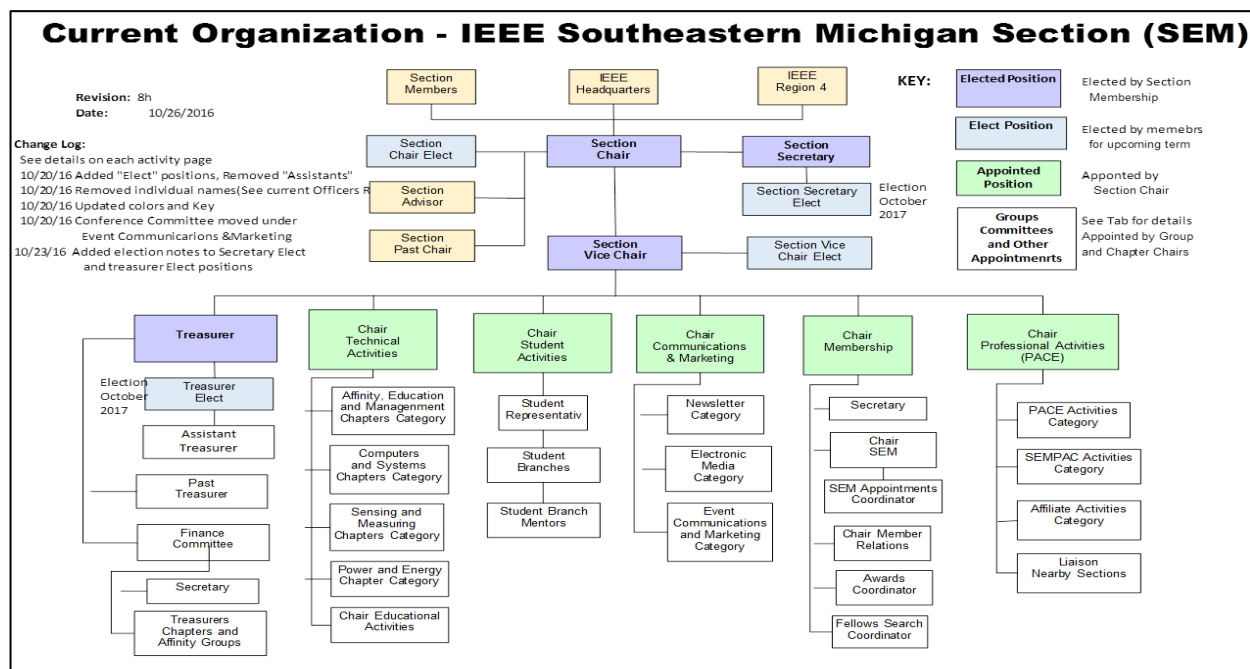
However, members of the section may have multiple technical interests and would like to have meeting information of other chapters. In order to communicate the meeting dates of all the chapters, affinity groups etc., to our members to facilitate their attendance, leaders of the groups are requested to send meeting information to our webmasters for posting on section's calendar.

More detailed information on meetings may be found through the IEEE SEM Website: <http://r4.ieee.org/sem/> and clicking on the **SEM meetings list** button near the bottom of the left-hand banner.

Automatic e-mail notification of web updates may be received using the “**Email Notifications**” button at the top of the **SEM Tools/Links** side banner.

Eric George - SEM Asst. Secretary

Download the **complete SEM Organization Chart**, in PDF format, from our Website at: <http://r4.ieee.org/sem/> Click on “**About SEM**” Tab and “**Current Officers**” (*NOTE: this is now password protected*)



ExCom Meeting Schedule

Below is the 2018 schedule for the Section ExCom meetings with links to add the events to your calendar. It is important that at least one person from each Chapter/Affinity Group attends each scheduled ExCom meeting. Information on each Face-to-Face (in-person) Meeting will be sent out once the venue is confirmed.

Please mark your calendars for the 2018 meetings. Or, link your personal calendar to the SEM Web calendar.

November 7, Wednesday, Teleconference (online only), 12:00 – 1:00 PM, <https://meetings.vtools.ieee.org/m/49038>

December 6, Thursday, Teleconference (online only), 12:00 – 1:00 PM, <https://meetings.vtools.ieee.org/m/49039>

Note: All IEEE Members are welcome at any IEEE meeting, at any time but, please register so we can be sure to accommodate you.

Eric George
SEM Assistant Secretary

Editor's Corner

Previous editions in this series may be found on the IEEE SEM website at: <http://r4.ieee.org/sem/>. Click on the "Wavelengths" button in the top row of selections.

Comments and suggestions may be sent to the editorial team at wavelengths@ieee-sem.org

OR

k.williams@ieee.org
sharan.kalwani@ieee.org
jrwwoodyard@gmail.com
isullivan@ieee.org
nilesh.dudhaia@ieee.org

We rely on our officers and members to provide the 'copy' that we finally present to readers of the newsletter.

The **Wavelengths Focus Plan and Personal Profiles** plan shown in the matrix below is presented to ensure coverage of section activities and events.

We try to complete the newsletter layout a week before the first of the month to allow time for review and corrections. If you have an article or notice, please submit it two weeks before the first of the month or earlier if possible.

The plan below relies on the contributions of our members and officers, so please do not be shy. If you have

something that should be shared with the rest of the section, we want to give you that opportunity.

Editors:

We are always looking for members interested in helping to edit the newsletter. The process is always more fun with more people to share the duties. Having more participants and contributors also helps us keep the newsletter interesting.

Heads Up

We are contemplating making the submissions of articles and events for the Wavelengths, a little easier and a little more inviting. Ideas are of course welcome and to this end, we are toying with setting up a little "newsletter portal". Stay tuned for some news on that end!

Join the Team:

If you feel you might like to join the team, or would like to train with us, please contact one of us at:

wavelengths@ieee-sem.org OR any one of the following:

sharan.kalwani@ieee.org
jrwwoodyard@gmail.com
k.williams@ieee.org
isullivan@ieee.org
nilesh.dudhaia@ieee.org

Wavelengths Annual Publication Plan for Articles

Month	AG's	Ch's	Ch's	SB's	Special Notice	Reporting Events	Monthly Focus	Awards
Jan		1		OU	Future Cities Judges	Election Results	Resolutions	
Feb	Cons	2		MSU	Science Fair Judges	Officer's Welcome	Surviving Winter	Future Cities
Mar		3	13	EMU	Spring Conf. Flyer	Spring Conference	Spring Conference	Science Fair
Apr		4		U/M-D	National Engrs Wk.	Future Cities	Chapter Focus	ESD - GOLD
May	Life	5	14		Outstanding Eng Awd	Science Fair	Elections - Prep	New Fellows
Jun		6			IEEE-USA Apmts.	ESD Banquett	Leadership Skills	SEM Awards
Jul		7	15		Nominations Call	MD-Webcasts	Students Issues	Region 4
Aug	WIE	8			MGA - Apmts.	Tech-Webinars	Womens Issues	
Sep		9	16	LTU	Region 4 Apmts.	Engineers Day	Professional Skills	
Oct		10		U/M-AA	Fall Conf. Flyer		Fall Conference	
Nov	YP	11	17	WSU	ELECTIONS!		Humanitarian	
Dec		12		U/D-M	IEEE-Com Apmts.	Fall Conference	Happy Holidays	

Wavelengths Annual Publication Plan for Personal Profiles

Month	Profiles	Profiles	Committees
Jan	Chair	New Officers	
Feb	V-Chair	Secretary	Communications
Mar	Treasurer	Sect-Adviser	Conference
Apr	Stud-Rep		Education
May		Sr Officers	Executive
Jun			Finance
Jul			Membership
Aug			Nominations
Sep			PACE Activities
Oct			Student Activities
Nov			Technical Activities
Dec		Editor-WL	



Web & Social Sites**SEM Website**

<http://r4.ieee.org/sem/>

Each of the sites below may be accessed through the SEM Website:

Section Website Event Calendar

(Select the “SEM Calendar” button - top row.)

SEM Facebook Page

(Select the “” button under the top row.)

SEM LinkedIn Page

(Select the “” button under the top row.)

SEM Officers:

For a complete listing of all - Section - Standing Committee - Affinity Group - Chapter and Student Branch Officers, see the SEM Officers Roster on the SEM web page under the “About SEM” button and select “Current Officers.”

Online Community <http://sem.oc.ieee.org>

Section Officers**Section Chair**

Robert Neff

Section Secretary

Eric George

Section Vice-Chair

Nevrus Kaja

Section Treasurer

Michael Folian

Standing Committees:**Section Adviser**

Don Bramlett

Chair Communications & Marketing**Chair Educational Activities****Chair Finance**

Nevrus Kaja

Chair Membership

Irina Sullivan

Chair Nominations & Appointments

Kimball Williams

Chair Professional Activities (PACE)

Sharan Kalwani

Chair Student Activities

Mel Chi

Student Representative**Chair Technical Activities**

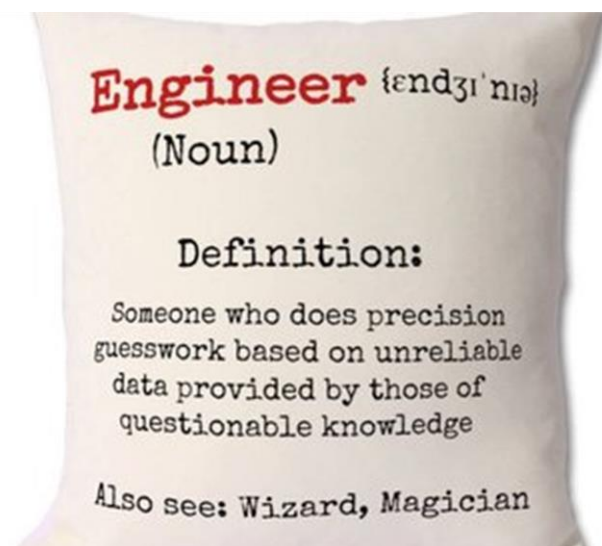
Kimball Williams



IEEE Southeastern Michigan

Visit Us on the Web at:

<http://r4.ieee.org/sem>



Advertising Rates

SEM Website & Newsletter
Advertising is coordinated through
our e-Wavelengths website at:

http://www.ieee-sem.org/ewavelengths/?page_id=181.

Please see the information listed on
the site, and contact our web editor
of e-Wavelengths, Nevruz Kaja, for
further details.

Leadership Meetings

SEM Executive Committee Monthly Teleconferences:

- 1st Wednesday or Thursday of Each Month @ Noon
- Check the Section Web Calendar at:
<http://r4.ieee.org/sem/sem-calendar/>
(Select the "SEM Calendar" button in the top row.)

SEM Executive Committee Face-to-Face Meetings:

- Once every Qtr. Find the location, and Registration at:
<https://meetings.vtools.ieee.org/main>

SEM Standing Committee Meetings:

SEM Affinity Group Meetings:

SEM Technical Society/Chapter Meetings:

SEM University Student Branch Meetings:

- Meeting schedules are announced on SEM Calendar
<http://r4.ieee.org/sem/>
(Select the "SEM Calendar" button in the top row.)
- Registration for all at:
<https://meetings.vtools.ieee.org/main>