



Wavelengths

Volume 55 – Issue 12
December 2015

Contents

Section Chair's Message	1
Ch05 -Workshop:	2
Elections Status 2015:	3
Windsor Section:	4
Chapter 8 Officer Dinner:	5
Future Cities Judges:	6
Other Coming Events	7
Executive Committee	8
Section Mission & Goals	9
SEM Monthly Meetings	9
Editors Corner	10
Section Officers	11
Web & Social Sites	11
Leadership Meetings	12
Advertising Rates	12

Wavelengths Newsletter is produced by IEEE volunteers and published by Southeastern Michigan (SEM) Section for the members. Newsletter Archive: <http://sites.ieee.org/sem/>

Section Chair's Message



Holidays Message:

I personally want to wish all of our IEEE Southeastern Michigan family a wonderful season of joy and celebration. No matter what your beliefs are, this is a time of year to reflect on family, friends and those that are less fortunate.

Elections:

Congratulations to all of our new officers and re-elected officers. An updated Organization Chart and Officers Roster will be posted very soon in the "Current Officers" area under the "About SEM" tab of the on the SEM Section web site, www.ieee-sem.org.

2016 Budget:

The ExCom will consider approving the 2016 Budget at the upcoming meeting early December. This budgetary process has been effective over

the last several years in managing the business of running our Section in a financially responsible way. By planning what we are going to have for income and determining what we will spend during the year we can keep our SEM Section financially viable.

Forward Planning:

Chairs have volunteered for our Spring Conference (Ravi Nigam) and Fall Conference (Nevrus Kaja & David Mindham). They are forming their organizing committees. You are invited to volunteer to assist them. You can find their contact information right now in the SEM website www.ieee-sem.org. Select the "About SEM" then click on "Current Officers".

While on this topic, may I also invite suggestions and ideas you would like to see as events, programs and offerings from your SEM Section. Please contact me or any of your officers with your thoughts.

I look forward to hearing from you and seeing you at our events. As always, your ideas and suggestions are encouraged and welcome.

Robert Neff
IEEE SEM Section Chair
RLNeff1@gmail.com

Ch05 -Workshop:

Embedded System Workshop organized by Chapter V, Computers.

A one day free embedded system workshop was held on Saturday, October 24, 2015. The workshop was attended by 145 engineers and students.

The workshop was held at Oakland University from 9AM to 4 PM. Persons from south east Michigan, Mount Pleasant, Ann Arbor, Lansing, Toledo, Windsor, Canada, Kalamazoo, Chicago etc. attended the event.

Throughout the day there were 9 technical presentations.

The attendees could interact with speakers and representatives from companies like, Vector, ETAS, Beningo Inc. IBM, and Intrepidcs.

This event was co-sponsored by Oakland University, GL-SPIN, Vector, IBM, ETAS, Intrepidcs and Beningo Inc.

This annual workshop has been held since 2003 and this was the 12th time it has taken place.

This event was coordinated by Professor Subramaniam Ganesan who is a professor at Oakland University and the chair of IEEE SEM Computer Society Chapter 5.



Elections Status 2015:**Election Verification**

In order to 'close the loop' with all the elected and appointed officers in the Section, this year we are requiring all officers to 'Confirm' their positions using an IEEE Survey.

The survey asks the Officer to identify themselves, and specifically identify each office position they hold in the Section. This process has already been a surprise to some officers!

At this time we have only just begun this process, and we expect a few more surprises as the process continues.

Officer Training:

Officers, both old and new are encouraged to use time during November and December to review and/or brush up on duties etc. by using on-line training modules available on the IEEE SEM website, <http://sites.ieee.org/sem/>. Select the button labeled 'Training Material' in the left hand panel of buttons under the header of 'SEM Tools/Links'..

This will place you in the Training page. It is suggested Voice over Power Point module #46 shown as "Virtual Training Plan" be listened to first in order to get an idea of the scope of the training modules and their recommend sequence.

The training modules are about 20-30 minutes in length so that they can be easily worked into a daily routine. Most officers who progressed through the entire sequence of modules indicated they can be easily completed in a 2 to 3 week-time frame. A reasonable goal is for all officers to review or complete the training modules considering the time remaining in in of November and December before the start of officer terms on January 1, 2016.

kw

Windsor Section:

This time of year we are celebrating the 1st birthday of our nearest neighbor, **Windsor Section!**

To help celebrate, we have received permission from the '**Canadian Review**' the Region 7 IEEE magazine to publish the article they ran in their spring 2015 issue. Their editor, Bruce Van-Lane graciously sent us the PDF versions for our use.

Our readers may download the PDF version from the SEM Website at: http://sites.ieee.org/sem/files/2015/1/1/A_Warm_Welcome_to_Windsor_Section.pdf

Windsor Section / Magazine:

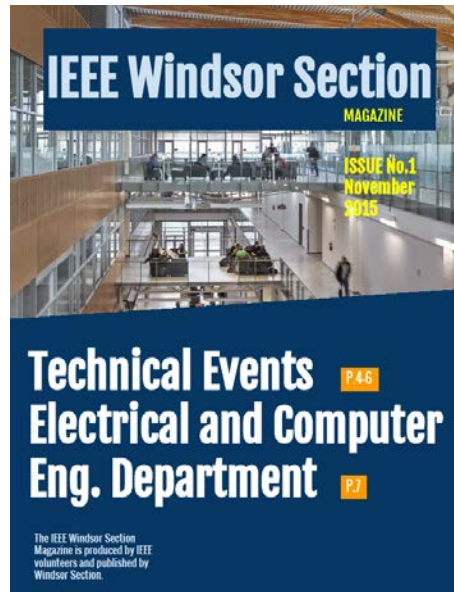
We also have cause to celebrate the release of the first Windsor publication in the form of its Section magazine

Our readers may download the PDF version from the SEM Website at: <http://sites.ieee.org/sem/files/2015/1/1/Windsor-Magazine.pdf>
(See the cover page on the right:)

The Windsor Section Secretary, who also happens to be the Editor of the Windsor Magazine, Eshafil Jedari sent this to us as a way to say 'Thank You' to Southeastern Michigan Section for the assistance we provided as they were preparing to become an independent Section.

From all of us at SEM:

"Happy Birthday Windsor!"



kw

Chapter 8 Officer Dinner:

On the evening of November 5, 2015 at 6 PM officers of IEEE SEM Chapter 8 (Electromagnetic Compatibility Society) and their spouses were invited to a "Thank You" dinner held at Papa Vino's Italian Kitchen, 3900 CenterPoint Pkwy, Pontiac, MI.

During the meeting, Bob Neff (Chapter Marketing Manager), was able to convince Steve Tomba (Chapter Secretary) to take on the bulk of the marketing role, though Bob will continue to provide the marketing for the annual EMC Fest, the Chapter's yearly colloquium.

A few more dedicated officers are needed to help plan and execute local EMC laboratory 'tours', a Summer EMC Family Picnic, presentations on EMC for local student groups, a "War Stories" meeting and an Automotive EMC Test Methods Workshop.

Interested EMC Society members wishing to help with meeting organization and planning in 2016 should contact Chapter Chair: Scott Lytle, and offer to help. Scott can be reached at: s.r.lytle@ieee.org

kw



These annual dinners are one way to express the Chapter's appreciation for all the work our officers perform during the year, and a way to thank their spouses for putting up with the occasional distractions, odd hour phone calls, full e-mail baskets and treks to IEEE events away from home and family.

(Notice the big smile on Bob's face in the photo of him at the dinner, after Steve had volunteered to take over the Marketing duties.)

Eleven of the Chapter officers and their spouses were able to attend, and remind each other of the events of the past year, and indeed, the past 20 + years since the Chapter was first formed as part of Chapter 4, in order to help get the Chapter started.



Over the years, Chapter officers and members have become good friends, and these 'social' events give everyone a chance to engage outside of the more structured 'official' IEEE Chapter meetings.

Although Chapter 8 continues to be one of the most active Chapters in the Section, several of its long range plans for future events are still waiting to be put into action.

Future Cities Judges:**IEEE-SEM SECTION SPECIAL AWARD JUDGES NEEDED FOR JANUARY 2016 FUTURE CITY COMPETITION**

by Don C. Bramlett, PE,
SMIEEE - IEEE/SEM Advisor

This is the sixteenth year that IEEE-SEM will provide a dedicated team of judges and a special professional organization award for the project having the most innovative application of electro-technology in the design of a city in the future.

Judging for the 2016 Michigan Regional Future City Competition will be on Monday, January 25, 2016 at the Suburban Collection Showplace in Novi, just off I-96 on Grand River between Novi Road and Beck Road.

Orientation and breakfast for judges will start at 7:30 am. Judging will be from 9:00 AM to 11:00 AM, followed by lunch. A complimentary continental breakfast and lunch are provided that day for the judges. This pleasurable and fulfilling task only takes half a day.

This is one of the premier pre-university programs for energized middle school students. Please volunteer to be among those to comprise the team of IEEE-SEM Section special award judges.

I encourage anyone who has an interest in the science and math education of our youth or an interest in pre-university education programs to consider being a judge at the Michigan Regional Future City Competition.

IEEE Student Branch members as well as regular IEEE members have found this to be a fulfilling experience in past years.

As a judge myself in previous years, I have found the experience of talking with the students, finding out their interests and observing their projects/presentations to be very rewarding.

So come out and spend the morning with us as we meet with some of the potential engineers, scientists and city planners of the future.

If interested in more information concerning being a member of the team of judges for the IEEE-SEM professional award at the Michigan Regional Future City Competition, contact **Don Bramlett** at (313) 235-7549 during normal weekday business hours, at his cell (313) 608-6223, or at home at (734) 591-1452 or by email at d.bramlett@ieee.org.

Other Coming Events

We try to publish IEEE events in several places to ensure that everyone who may want to attend has all the available relevant information.

SEM Web Calendar:

<http://sites.ieee.org/sem/>

Select "SEM Calendar" button in the top row of the website.

SEM Web Meetings:

<http://sites.ieee.org/sem/>

Select "SEM Meeting List" button in the left-hand column.

vTools Meetings:

<http://sites.ieee.org/vtools/>

Select "Schedule a Meeting" button in the left-hand column of buttons.

Other Happenings

However, since IEEE members tend to have eclectic interests, we want to give everyone a heads up for some of the non-IEEE events that may be of interest.

Let us know if you have a special interest in a field that encourages technical study and learning, and wish to share opportunities for participation with members of the section.

Send the particulars to
k.williams@ieee.org

An announcement may be placed in the newsletter.

Links:

Michigan Institute for Plasma Science and Engineering:

Seminars for the 2015-2016 academic year:

<http://mipse.umich.edu/about/seminars.htm>.

Below are links to local SEM Clubs engaged in technical hobbies as well as links to sites that may be useful for locating clubs in the area.

Amateur Radio Clubs in Southeastern t Michigan

(This is a fairly comprehensive listing of all the 'Ham' clubs in SEM.)

<http://www.wa2hom.org/ham-radio-clubs-in-se-michigan/>

Model RC Aircraft

<http://www.skymasters.org/>

Model Rocketry

<http://team1.org/>

Astronomy

<http://www.go-astronomy.com/astro-clubs-state.php?State=MI>

Experimental Aircraft Association

<https://www.eaa.org/en/ea/eaa-chapters/find-an-eea-chapter>

Robots

<http://therobotgarage.com/about-us.aspx>

Science Fiction Conventions

<http://www.conclavesf.net/>

Mad Science

<http://www.madscience.org/>

ESD PE Review Class

www.esd.org

Makers Faire:

<http://www.thehenryford.org/events/makerFaire.aspx>

Executive Committee

The SEM Executive Committee is the primary coordination unit for Southeastern Michigan (SEM) IEEE operations. The basic organization chart below shows the 2015 arrangement of communications links designed to provide inter-unit coordination and collaboration.

The SEM Executive Committee meets in a teleconference each month on either the first Wednesday or first Thursday at noon. The specific meeting days, times, phone or WebEx numbers and log in codes are published on the IEEE SEM Website calendar: <http://sites.ieee.org/sem/> Click on the “Calendar” button in the top banner on the first page of the web site.

If you wish to attend, or just monitor the discussions, please contact David Mindham, the section secretary at: dmindham@ieee.org and request to be placed on the distribution list for a monthly copy of the agenda and minutes.

More meeting details are available on the next page of this newsletter.

Other Meetings:

About half of our members maintain memberships in one or more of the IEEE technical societies, which automatically makes them members of the local chapter which is affiliated with that society. As a result, they should receive notices of the local chapter meetings each month.

However, members of the section may have multiple technical interests and would like to have meeting information of

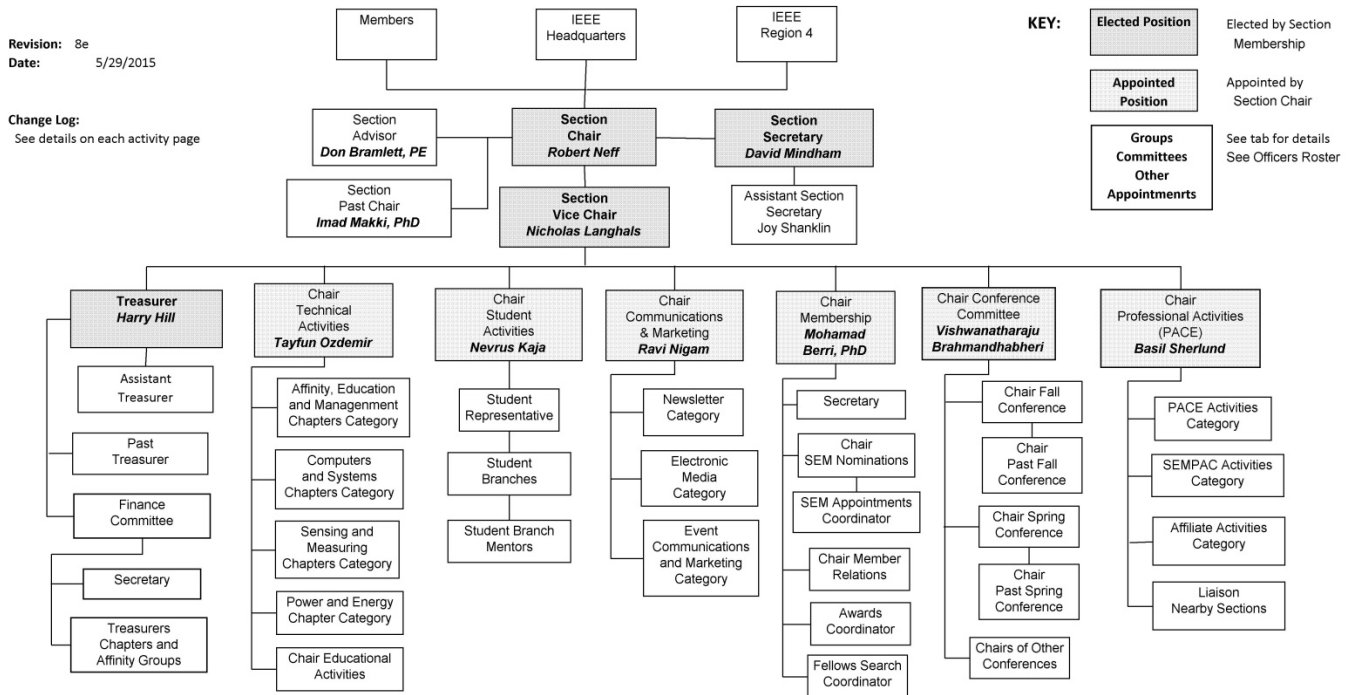
other chapters. In order to communicate the meeting dates of all the chapters, affinity groups etc., to our members to facilitate their attendance, leaders of the groups are requested to send meeting information to our webmasters for posting on section’s calendar.

More detailed information on meetings may be found by using the IEEE meetings site. This may be found through the IEEE SEM Website: <http://sites.ieee.org/sem/> and clicking on the **SEM meetings list** button near the bottom of the left hand banner.

Automatic e-mail notification of web updates may be received using the “**Email Notifications**” button at the top of the **SEM Tools/Links** side banner.

David Mindham - SEM Secretary

Current Organization - IEEE Southeastern Michigan Section (SEM)



Download the complete SEM Organization Chart, in PDF format, from the SEM Website at: www.ieee-sem.com Then, click on “About SEM” Tab, followed by, click on “Current Officers”

Section Mission & Goals**Section Focus:**

The IEEE SEM Section Officers have reaffirmed the Mission and Goals of the section with the guidance of the Region 4 leadership. The Mission and Goals conform with those of IEEE worldwide.

You have probably seen the Mission and Goals before. However, it is important to keep these clearly in mind and remind ourselves often that this is what we are about and what we are trying to accomplish.

Section Mission

Inspire – Enable – Empower and Engage Members of IEEE at the local level.

For the purpose of:

- Fulfilling the mission of IEEE (...**foster technological innovation and excellence for the benefit of humanity.**),
- Enhancing the members' growth and development throughout their life cycle, and
- Providing a professional home,

Section Goals

- Increase member engagement,
- Improve relationships with and among members,
- Increase operational efficiency and effectiveness, within the section and its interfaces,
- Enhance collaboration – serve as the local face of IEEE to the community,
- Increase membership, and
- Ensure the collection of appropriate information necessary to assist the IEEE to become a data driven organization.

It is now the task of the section leadership to guide and coach all section officers and elements to focus their activities on achieving those goals.

SEM Monthly Meetings**Scheduled Meetings:**

The regular meetings of the SEM Leadership (Executive Committee) are scheduled well in advance to allow everyone to place them in their personal planning calendars, and then defend those dates against encroachment. (*Not always possible.*)

Two types of Monthly meetings are normally scheduled:

Monthly Teleconference / WebEx as well as:

Quarterly Face-to-Face (F2F). See schedule below.

Note: All IEEE meetings are 'Open' for all members to attend.

The only caveat is that you please register using the specific meeting form on the vTools site at:

<https://meetings.vtools.ieee.org/main>

Registering will ensure there is sufficient space, refreshments and support for attendees.

Teleconference Schedule (held from 12-1 p.m.):

- December 2, 2015

F2F Meeting Schedule:

- January 7, 2016

More information for F2F meetings will be emailed in a timely manner before the meeting dates.

Contact **David Mindham** the SEM Section Secretary at: dmindham@ieee.org for more information.

Also consider checking for additional information as the meeting dates approach at the SEM website (<http://sites.ieee.org/sem/>). The links to the SEM Facebook or LinkedIn pages on the SEM website may also be checked for updates.

All the normally scheduled meetings of each of the other section chapters, affinity groups etc. are listed each month in the vTools area of our SEM website at:

http://ewh.ieee.org/r4/se_michigan/calendar1.php

The information is for:

Standing Committee Meetings
Affinity Group Meetings
Technical Chapter Meetings
University Student Branch Meetings

Calendar Schedule:

Meetings are also announced on the SEM Calendar web page

<http://sites.ieee.org/sem/>

(Select the "SEM Calendar" button in the top row.)

Note: Often meetings of the Executive Committees of Chapters and Affinity Groups (and standing committees, of course) are listed only in the SEM Calendar page, since it is felt that most members would not wish to sit through administrative meetings.

However, if this type of meeting is just your 'cup of tea', then contact the officers of the unit that is conducting the meeting, and ask to be 'linked' into their teleconference, SKYPE, Google Hangout, or WebEx meeting. They will be happy to have you as a participant.

Many volunteers become interested in section activities when they get a chance to attend a monthly meeting and 'peek under the hood' to find out how the machinery of the section actually runs. It can be a rewarding experience.

David Mindham
SEM Section Secretary.
dmindham@ieee.org

Editors Corner

Previous editions in this series may be found on the IEEE SEM website at: <http://sites.ieee.org/sem/>. Click on the "Wavelengths" button in the top row of selections.

Comments and suggestions may be sent to the editor at k.williams@ieee.org. We also recommend a cc to the chair of the Communications and Marketing Committee, [Ravi Nigam](mailto:ravigam154934mi@comcast.net) at: ravigam154934mi@comcast.net.

We rely on our officers and members to provide the 'copy' that we finally present to readers of the newsletter. The **Wavelengths Focus Plan and Personal Profiles** plan shown in the matrix below is presented to ensure

coverage of section activities and events.

We try to complete the newsletter layout a week before the first of the month to allow time for review and corrections. If you have an article or notice, please submit it two weeks before the first of the month or earlier if possible.

The plan below relies on the contributions of our members and officers, so please do not be shy. If you have something that should be shared with the rest of the section, we want to give you that opportunity.

Editors:

We are always looking for members interested in helping to edit the

newsletter. The process is always more fun with more members to share the duties, and help keep the newsletter alive and lively by providing alternative points of view.

Review:

Each month Jim Woodyard takes time to review the current issue and try to keep us from too many errors of both English and content. Jim likes to work in the background but, a special thank you is deserved for his continuous efforts and dedication to the quality of the publication. Thank you Jim!

Join the Team:

If you feel you might like to join the team, or would like to train with us, k.williams@ieee.org

Wavelengths Annual Publication Plan for Articles

Month	AG's	Ch's	Ch's	SB's	Specal Notice	Reporting Events	Monthly Focus	Awards
Jan		1		OU	Future Cities Judges	Election Results	Resolutions	
Feb	Cons	2		MSU	Science Fair Judges	Officer's Welcome	Surviving Winter	Future Cities
Mar		3	13	EMU	Spring Conf. Flyer	Spring Conference	Spring Conference	Science Fair
Apr		4		U/M-D	National Engrs Wk.	Future Cities	Chapter Focus	GOLD Award
May	Life	5	14		Outstanding Eng Awd	Science Fair	Elections - Prep	New Fellows
Jun		6			IEEE-USA Apmts.	ESD Banquett	Leadership Skills	SEM Awards
Jul		7	15		Nominations Call	MD-Webcasts	Students Issues	Region 4
Aug	WIE	8			MGA - Apmts.	Tech-Webinars	Womens Issues	
Sep		9	16	LTU	Region 4 Apmts.	Engineers Day	Professional Skills	
Oct		10		U/M-AA	Fall Conf. Flyer		Fall Conference	
Nov	YP	11	17	WSU	ELECTIONS!		Humanatarian	
Dec		12		U/D-M	IEEE-Com Apmts.	Fall Conference	Happy Holidays	

Wavelengths Annual Publication Plan for Personal Profiles

Month	Profiles	Profiles	Committees
Jan	Chair	New Officers	
Feb	V-Chair	Secretary	Communications
Mar	Treasurer	Sect-Adviser	Conference
Apr	Stud-Rep		Education
May		Sr Officers	Executive
Jun			Finance
Jul			Membership
Aug			Nominations
Sep			PACE Activities
Oct			Student Activities
Nov			Technical Activities
Dec		Editor-WL	



Web & Social Sites

SEM Website

<http://sites.ieee.org/sem/>

Each of the sites below may be accessed through the SEM Website:

Section Website Event Calendar

(Select the “SEM Calendar” button - top row.)

SEM Facebook Page

(Select the “” button under the top row.)

SEM LinkedIn Page

(Select the “” button under the top row.)

SEM Officers:

For a complete listing of all - Section - Standing Committee - Affinity Group - Chapter and Student Branch Officers, see the SEM Officers Roster on the SEM web page under the “About SEM” button and select “Current Officers”.

SEM On Line Community

<http://sem.oc.ieee.org>

Section Officers

Section Chair
Robert Neff

Section Secretary
David Mindham

Section Vice-Chair
Nicholas Langhals

Section Treasurer
Harry Hill

Standing Committees:

Section Adviser
Don Bramlett

Chair Communications & Marketing
Ravi Nigam

Chair Conferences
Raju Brahmmandhabheri

Chair Educational Activities
Chaomin Luo

Chair Finance
Basil Sherlund

Chair Membership
Mohamad Berri

Chair Nominations
Kimball Williams

Chair Professional Activities
Basil Sherlund

Chair Student Activities
Nevrus Kaja

Student Representative
Samer Koda

Chair Technical Activities
Ali Eydgahi

Past Section Chair
Imad Makki



IEEE Southeastern Michigan

Visit Us on the Web at:
<http://sites.ieee.org/sem>

Leadership Meetings

All IEEE members are welcome to join us at any regularly scheduled meeting:

Advertising Rates

SEM Website & Newsletter
 Advertising Rates / Month:

Our readers specify & purchase a wide range of electronic components, equipment and services.

Our sponsors come from industry, education, and nonprofit organizations.

Full page \$500,

Half page \$250

Quarter page \$125,

Eighth page \$65.

SEM Executive Committee Monthly Teleconferences:

- 1st Wednesday or Thursday of Each Month @ Noon
- Check the Section Web Calendar at:
<http://sites.ieee.org/sem/>
 (Select the "SEM Calendar" button in the top row.)

SEM Executive Committee Face-to-Face Meetings:

- 1/Qtr. Usually held at U/M-D Fairlane Center
- Registration at:
<https://meetings.vtools.ieee.org/main>

SEM Standing Committee Meetings:

SEM Affinity Group Meetings:

SEM Technical Chapter Meetings:

SEM University Student Branch Meetings:

- Meeting schedules are announced on SEM Web Calendar
<http://sites.ieee.org/sem/>
 (Select the "SEM Calendar" button in the top row.)
- Registration for all at:
<https://meetings.vtools.ieee.org/main>