



Wavelengths

Volume 55 – Issue 11
November 2015

Contents

Section Chair's Message	1
Fall Section Conference:	2
Elections Status 2015:	3
HKN Alumni Chapter:	3
Chapter 15 NPSS:	4
Maxwell Celebration:	5
Indiana Metro Area Workshop:	6
Seminar at LTU:	7
Other Coming Events	9
Executive Committee	10
Section Mission & Goals	11
SEM Monthly Meetings	11
Editors Corner	12
Section Officers	13
Web & Social Sites	13
Leadership Meetings	14
Advertising Rates	14

Wavelengths Newsletter is produced by IEEE volunteers and published by Southeastern Michigan (SEM) Section for the members.
Newsletter Archive: <http://sites.ieee.org/sem/>



Preaching to the Choir:

Thank you for reading my monthly letter to our membership. As of October 25, 2015 there are over 3100 active members in the Southeastern Michigan Section (SEM) of IEEE. Yet there are 765 members that have opted out of receiving **ALL** IEEE e-mail communications. We understand that our members receive too many emails, but do all of these "opt out" members realize that they will not receive **ANY** IEEE communications? If you received an email announcement from IEEE SEM with a link to this issue of Wavelengths you are not in that group. If you know someone who is not receiving IEEE information, and would like to, please suggest they change their preferences at the

myIEEE portal: <https://www.ieee.org/profile/public/login/publiclogin.html>

Fall Conference:

The IEEE SEM Fall Conference is scheduled for November 17th at the University of Michigan-Dearborn. The meeting announcement is on page two of this newsletter. The conference program committee has planned an entertaining and educational meeting. I am the keynote speaker and will give an informative and entertaining presentation on autonomous

Section Chair's Message

vehicles. The presentation was given at the SAE World Congress this past April and it was very well received. (If I do say so myself). The April presentation will be updated because the field of autonomous vehicles is a very fast moving technical area.

The latest conference updates and registration information are available at both the section website, www.ieee-sem.org, and the conference website, www.ieee-sem.org/fall.

Elections:

Elections are over! The Elections and Nominations Committee is examining the results and verifying write-in candidates are indeed eligible and willing to serve if they were elected. I wish to express my appreciation to all officers who served this past year. We need your assistance this coming year even if you did seek nor were elected to an office. Your experience is a valuable resource and I urge you to share it with the newly elected section officers.

2016 Budget:

The section's executive committee, ExCom, has been asked for their opinion on the proposed 2016 budget. An updated version of the budget based on ExCom's input will be discussed at the November ExCom meeting. The final budget will be presented and voted on during the December ExCom meeting.

I look forward to hearing from you and seeing you at our events. As always, your ideas and suggestions are encouraged and welcome.

Robert Neff
IEEE SEM Section Chair
RLNeff1@gmail.com

Fall Section Conference:

Autonomous Vehicles, Their Legacy and Future**Date:** November 17, 2015**Location:**U of M Dearborn – Fairlane Conference Center
(North Building)**Keynote Speaker:**

Bob Neff – SEM Section Chair

Topic:

"Autonomous Vehicles, Their Legacy and Future"



What will our life be like with autonomous vehicles?
Will it be the anticipated utopia or will there be new issues that must be considered?

Autonomous vehicles are not a new idea. In 1925, the Houdina Radio Control Company demonstrated a driverless radio controlled vehicle called the "Linrrican Wonder" in New York City. The General Motors Futurama Exhibit at the 1939 World's Fair depicted radio-controlled electric cars that were propelled with electromagnetic fields embedded in the roadway. Interest and research has continued thorough out the years up to the present time. Only since the 1990s has the development focus shifted to autonomous vehicles that operate in current traffic patterns.

The presentation provides a brief history of automated vehicles and highways and highlights the National Automated Highway Demonstration in 1997. Many automated features have evolved since the demonstration; the evolution of the new features have been driven by the many forces that will be discussed in the presentation. The presentation will discuss the challenges facing the implementation e of the features which include their adoption; understanding their role in vehicle navigation; and showing how vehicle-to-vehicle communication can facilitate the future of autonomous vehicles. Finally, the presentation will offer a vision of life with autonomous vehicles.

The registration website is: https://meetings.vtools.ieee.org/meeting_registration/register/34367

IEEESEM Fall Conference Chair

The IEEE SEM Fall Conference Chair is Basil Sherlund who has 40 years of experience in computer design and information technology. He received a B.S. in Electrical Engineering, with honors; a M.S. in Computer Science; and is a life member of Eta Kappa Nu, the electrical engineering honor society.

Basil is a former member of the executive board of the IEEE Software Engineering Standards Committee and the Technical Committee on Software Engineering. He has held two offices and three chapter positions in IEEE Region 4 and SEM, and is a member of the Region 4 Educational Activities Committee. The conference committee needs volunteers in order for the conference to achieve its full potential as an educational and networking opportunity for all SEM members. Please contact Basil (bsherlund@ieee.org) if you wish to assist with conference planning and/or volunteer for tasks to be carried out during the conference.

Elections Status 2015:

Election ballots closed on October 26, 2015.

(Note: Student Branches and HKN Branches hold their own elections at times selected by each.

Standing Committee officers are appointed by the Section Executive Committee and are not elected to their posts.)

Schedule:

The election schedule is planned as follows:

- August 3 nominations open,
- September 21 nominations close,
- September 27 ballot ratification by the SEM Executive Committee (completed electronically.),
- September 28 elections open,
- October 26 elections close and
- November 5 election ratification by the SEM ExCom,

(Items in 'grey' have already passed.)

The Nominations and Appointments Committee will present the final election results for review and final ratification during the November 5th ExCom teleconference.

Election Analysis:

Between the ratification of the ballot and the presentation of the election results, the Nominations and Appointments Committee must sort through the raw data and make several determinations:

- Let the clear 'winners' on each ballot know that they have received the 'nod' of approval from their members, and are requested to take part in the November 5th ExCom teleconference to receive the 'final approval' from the ExCom.
- Contact candidates who were not elected to determine if they are interested in serving in a Geo-unit or another capacity.

- Verify that 'write-in' and 'self-nominated' candidates are willing to serve in the post for which they were nominated.
- Determine if unelected 'write-in' candidates are willing to serve in another capacity. (No Geo-unit can afford to turn away perspective volunteer officers and every effort will be made to find a suitable position for them.
- Update the SEM Officer Roster for use in informing the SEM members of the 2016 officers.
- Completely update the vTools Officer Reporting tool so that volunteer-position appointments are available permanently on-line at IEEE HQ.
- Contact all the newly elected officers and inform them of the training resources on the following websites: SEM, Center for Leadership Excellence, vTools, and IEEE.org.

Final Notifications:

Elected officers will receive formal notice of their election and that terms of office begin January 1, 2016 after the ExCom 'validates' the election results at the November 5th teleconference

Officer Training:

Officers, both old and new are encouraged to use time during November and December to review and/or brush up on duties etc. by using on-line training modules available on the IEEE SEM website, <http://sites.ieee.org/sem/>. Select the button labeled 'Training Material' in the left hand panel of buttons under the header of 'SEM Tools/Links'..

This will place you in the Training page. It is suggested Voice over Power Point module #46 shown as "Virtual Training Plan" be listened to first in order to get an idea of the scope of the training modules and their recommend sequence.

The training modules are about 20-30 minutes in length so that they can be easily worked into a daily routine. Most officers who progressed through the entire sequence of modules indicated they can be easily completed in a 2 to 3 week-time frame. A reasonable goal is for all officers to review or complete the training modules considering the time remaining in in of November and December before the start of officer terms on January 1, 2016.

HKN Alumni Chapter:

If you are an 'alumni' of HKN, you should know that we are working to establish an 'Alumni Chapter' here in our Section.

We began collecting names and HKN background information from members at this year's Spring Conference, and we are almost ready to submit a petition to IEEE MGA for consideration.

We will also be at the Fall Conference on November 17, at the IEEE Membership Table collecting any names and HKN information from any other members who wish to become "Keel Plate Owners" (founding members) of the new Chapter.

HKN Information Needed:

To register as a Chapter founding member, you would need to present the following data:

- Your Name
- Your Signature
- Your IEEE Member #
- Your HKN or IEEE-HKN Induction Chapter Name and Number
- Your **Date** of HKN induction.

See you at the Fall Conference!

kw

Chapter 15 NPSS:

On October 7, 2015 members of the new IEEE SEM Nuclear Plasma Sciences Society (NPSS) Chapter 15 celebrated the formation of the chapter with the awarding of a NPSS plaque to David Tescott. The plaque was awarded to David in honor of his efforts which resulted in the initiation of the SEM NPSS Chapter.



Dr. Verboncoeur on the right handing the plaque to David Tescott.

The initial meeting was held in conjunction with the Michigan Institute for Plasma Science and Engineering (MIPSE) Annual Graduate Student symposium. It was the 6th annual symposium and held on the University of Michigan Campus in Ann Arbor, Michigan.

Presiding at the event was Dr. John Verboncoeur of Michigan State University and current NPSS President.

The symposium focus for this year was "Leading Challenges and the Role of Transformation in the Fusion and Plasma Sciences", and was held as part of the on-going series of lectures held at the Michigan Institute for Plasma Science and Engineering (MIPSE).

The lead speaker was Edmund Synakowski of the U.S. Department of Energy.



Edmund Synakowski

Abstract of Presentation

The fusion energy and plasma sciences have undergone remarkable transformational events in its history. Many of these events have shaped and reshaped our understanding of what the field's standards for excellence and progress ought to be. Indeed, many scientific developments have enlarged the consciousness of the field regarding what is even

possible. Examples in magnetic fusion go all the way back to declassification. When there emerged a common understanding on both sides of the Cold War of the nature of the science of plasmas that emboldened scientists globally to reach for theoretical frameworks that spanned specific experimental configurations. While much of scientific progress is incremental, this talk takes a walk through the history of fusion and plasma science that is decidedly selective, with the choice made to focus on transformational developments that have led to rapid expansions in thinking of what it means to conduct this research. It is with this as backdrop that we can draw inspiration as we view the tasks in hand of establishing the scientific bases for fusion and the plasma sciences, and for mastering control of both the burning plasma and low temperature plasma regimes.

MIPSE Seminar Series:

The seminar series lectures are open to the interested public. The seminar schedule for the 2015-2016 academic year is available at:

<http://mipse.umich.edu/about/seminars.htm>.

kw

Maxwell Celebration:

IEEE Southeastern Michigan Chapter IV welcomes you to:
Celebrating Maxwell's Equations: 150 Years

WHEN:

3:00 pm ~ 7:00 pm
Friday, November 20th, 2015

WHERE:

1200 EECS
1301 Beal Ave.
University of Michigan
Ann Arbor, MI

AGENDA:

3:00 pm : Lecture by Dr. Arthur Yaghjian
4:00 pm : Panel Session
5:00 pm : OSUM Student Demo Competition
6:00 pm : Lecture by Dr. Jim Rautio



Yaghjian



Dean



McMillen



Stock



Rautio

Refreshments and Hors d'Oeuvres Provided

Please register no later than November 16th at:

<https://meetings.vtools.ieee.org/m/36129>

Registration is free, but required.

Sponsored By:



IEEE/HKN
Student Chapter

ECE ELECTRICAL & COMPUTER ENGINEERING
UNIVERSITY OF MICHIGAN

OSA
The Optical Society

OSUM Optics Society
at Michigan



National Science Foundation
WHERE DISCOVERIES BEGIN

SPIE
CONNECTING PEOPLE
ADVANCING LIGHT

Indiana Metro Area Workshop:



IEEE SMART TECH
METRO AREA WORKSHOP SERIES
 Professional workshops in a learning environment

IEEE Advancing Technology for Humanity

IEEE Central Indiana Section
 EnCON Presents - IEEE Metro Area Workshop

November 13 - 14, 2015
8:00 am - 5:00 pm
Indianapolis Marriot North
 (Keystone/Fashion Mall area)
 3645 River Crossing Parkway
 Indianapolis, IN 46240

Register Now to Secure Your Spot!

For Conference Information & Registration, Please Visit:
<http://cis-ieee.org/EnCON>

Conference Contact Info:
Phil Walter -
Phil.Walter@ieee.org
 Phone# 812-223-6520
David Koehler -
david.koehler@ieee.org

Industry Exhibitor Sponsorship Opportunities, Contact:
Phil Walter -
Phil.Walter@ieee.org
 Phone# 812-223-6520 OR
 Earl Hill - eshill.loma@gmail.com

Technical Program

- Power Engineering
- Electric/Hybrid Vehicle
- Computer and Network
- Cyber Security/ Cyber Crime
- Biotechnology
- Medical
- Life Science

Professional Development

- Career Assistance
- Effective Job Search
- Intellectual Properties
- Project Management

Tech Industry Exhibitors

- In the Lobby all day both days
- Industry exhibits and sponsorships are available

Student Poster Contest

- Evening Closing Remarks and
- Student Poster Contest awards ending at 6:00 pm

Latest Trends in Emerging Topics for Practicing Engineers, Students & Retired Engineers

- Friday Night Reception from 5:00 to 7:00 pm
- * Registration for both days includes Friday Reception
- Plenary Speakers
- Networking Breakfast, Breaks and Lunch

Professional Development Hours: PDH & Continuing Education Units: CEUs Will be Available

IEEE Smart Tech Metro Area Workshops provide participants with a unique learning experience with topics on the cutting-edge of technical innovation today. This unique two-day conference is not only geared towards practicing engineers, but also students and retired engineers. This is an excellent opportunity for networking, knowledge sharing and professional development.

The material will be presented by some of the industry leaders. Whether you are just starting a career or have been practicing for many years, Saturday's program will give the attendee the skills necessary to find a job or help keep them competitive in today's ever changing business world.

Please join us to enhance your current knowledge and skill set and further your career.

Seminar at LTU:



Friday
Engineering Seminar
Sponsored by Eaton

Development of Sensors and Systems for NDE
Overview of Activities at Michigan State University

Prof. Lalita Udpa, Ph.D.
Department of Electrical and Computer Engineering
Michigan State University
East Lansing, MI

Friday, November 6, 2015
12 PM-1 PM EST, Engineering Building, E211
Lawrence Technological University

Nondestructive Evaluation is an integral part of manufacturing and maintenance of structures and parts. This talk will give a brief overview of the research activities in Nondestructive Evaluation Laboratory at Michigan State University. The group works on Electromagnetic (zero frequency to microwave frequency), Ultrasonic (Guided wave) and X-ray NDE methods for a variety of applications ranging from inspection of nuclear fuel pellets and buried gas transmission pipelines to detection of cracks in implanted prosthetic heart valves. The research activities can be broad classified into 3 categories, namely, i) development of computational models for the solution of forward problems, ii) solution of inverse problems and iii) development of sensors & systems.

The talk will then focus on one of the current projects funded by AFRL, focused on development of better inspection methods for estimating the structural integrity of thick and multi-layer structures. Currently, many of these inspections are performed using time-consuming and laborious manual inspection techniques. To further complicate the situation, a large number of these inspections require part removal or partial disassembly in order to gain access to the inspection area. Hence there is need for a new reliable approach to address these issues. The NDE group at MSU is working on design and development of new eddy current systems using magnetoresistive sensors arrays. These sensors systems are tailored to address two major challenges in detection of cracks at rivet sites in multi-layer riveted airframe structures, namely i) cracks of all orientations, and ii) in the presence of steel rivets which produces a dominant signal that masks indications from nearby cracks.

The development of the new sensor system uses a combination of model-based parametric study to design optimization sensor configuration and signal processing techniques to enhance the signal for reliable detection. Initial results of this work will be presented.

About the Presenter: Lalita Udpa received her Ph.D. in Electrical Engineering in 1986 and is currently a Professor in the department of Electrical and Computer Engineering at Michigan State University. Dr. Udpa works primarily in the broad areas of Nondestructive Evaluation, Signal Processing and biomedical applications. She has over 20 years' experience working on various aspects of NDE such as development of computational models for the forward problem in NDE, signal and image processing, pattern recognition and neural networks, and development of solution techniques for inverse problems. Dr. Udpa has graduated 25 PhD and 40 MS students. She has authored or coauthored over 250 scholarly publications and is an associate technical editor of the American Society of Nondestructive Testing Journal - Materials Evaluation and is on the Editorial Board of Research Techniques in NDE. Dr. Udpa is a Fellow of the IEEE and a Fellow of the American Society of Nondestructive Testing, Fellow of the Indian Society of Nondestructive Testing and a Member of the Academie, NDT International.

Lawrence Technological University

Founded in 1932 on the site where Henry Ford perfected the moving assembly line, Lawrence Technological University offers over 100 undergraduate, master's, and doctoral programs in Colleges of Architecture and Design, Arts and Sciences, Engineering, and Management. With a focus on leadership through theory and practice, LTU seeks to help students understand not only why something should work, but also how it works in real-life situations. Consequently, many of the University's programs encourage students to participate in professional projects in which they solve real problems facing practicing architects, engineers, managers, and scientists. Through co-op, part-time work, internships, student projects, and participation in professional organizations, students network with leaders in their chosen fields.

LTU alumni command salaries that rank in the highest 100 of all U.S. universities, and the Brookings Institution ranks LTU fifth in the country for providing the most value-added in preparing its graduates for well-paying occupations.

Web conference details

Guest URL: <https://my.ltu.edu/webapps/bb-collaborate-BBLEARN/launchSession/guest?uid=13011f2a-2dcf-4420-94a6-226feae649d6>

Participant Phone: [571-392-7703](tel:571-392-7703)

Participant: PIN: 766854515375

Other Coming Events

We try to publish IEEE events in several places to ensure that everyone who may want to attend has all the available relevant information.

SEM Web Calendar:

<http://sites.ieee.org/sem/>

Select "SEM Calendar" button in the top row of the website.

SEM Web Meetings:

<http://sites.ieee.org/sem/>

Select "SEM Meeting List" button in the left-hand column.

vTools Meetings:

<http://sites.ieee.org/vtools/>

Select "Schedule a Meeting" button in the left-hand column of buttons.

Other Happenings

However, since IEEE members tend to have eclectic interests, we want to give everyone a heads up for some of the non-IEEE events that may be of interest.

Let us know if you have a special interest in a field that encourages technical study and learning, and wish to share opportunities for participation with members of the section.

Send the particulars to
k.williams@ieee.org and
h.s.hill@ieee.org

An announcement may be placed in the newsletter.

Links:

Michigan Institute for Plasma Science and Engineering:

Seminars for the 2015-2016 academic year:

<http://mipse.umich.edu/about/seminars.htm>.

Below are links to local SEM Clubs engaged in technical hobbies as well as links to sites that may be useful for locating clubs in the area.

Amateur Radio Clubs in Southeastern t Michigan

(This is a fairly comprehensive listing of all the 'Ham' clubs in SEM.)

<http://www.wa2hom.org/ham-radio-clubs-in-se-michigan/>

Model RC Aircraft

<http://www.skymasters.org/>

Model Rocketry

<http://team1.org/>

Astronomy

<http://www.go-astronomy.com/astro-clubs-state.php?State=MI>

Experimental Aircraft Association

<https://www.eaa.org/en/ea/eaa-chapters/find-an-eaa-chapter>

Robots

<http://therobotgarage.com/about-us.aspx>

Science Fiction Conventions

<http://www.conclavesf.net/>

Mad Science

<http://www.madscience.org/>

ESD PE Review Class

www.esd.org

Makers Faire:

<http://www.thehenryford.org/events/makerFaire.aspx>

Executive Committee

The SEM Executive Committee is the primary coordination unit for Southeastern Michigan (SEM) IEEE operations. The basic organization chart below shows the 2015 arrangement of communications links designed to provide inter-unit coordination and collaboration.

The SEM Executive Committee meets in a teleconference each month on either the first Wednesday or first Thursday at noon. The specific meeting days, times, phone or WebEx numbers and log in codes are published on the IEEE SEM Website calendar: <http://sites.ieee.org/sem/>. Click on the “Calendar” button in the top banner on the first page of the web site.

If you wish to attend, or just monitor the discussions, please contact David Mindham, the section secretary at: dmindham@ieee.org and request to be placed on the distribution list for a monthly copy of the agenda and minutes.

More meeting details are available on the next page of this newsletter.

Other Meetings:

About half of our members maintain memberships in one or more of the IEEE technical societies, which automatically makes them members of the local chapter which is affiliated with that society. As a result, they should receive notices of the local chapter meetings each month.

However, members of the section may have multiple technical interests and would like to have meeting information of

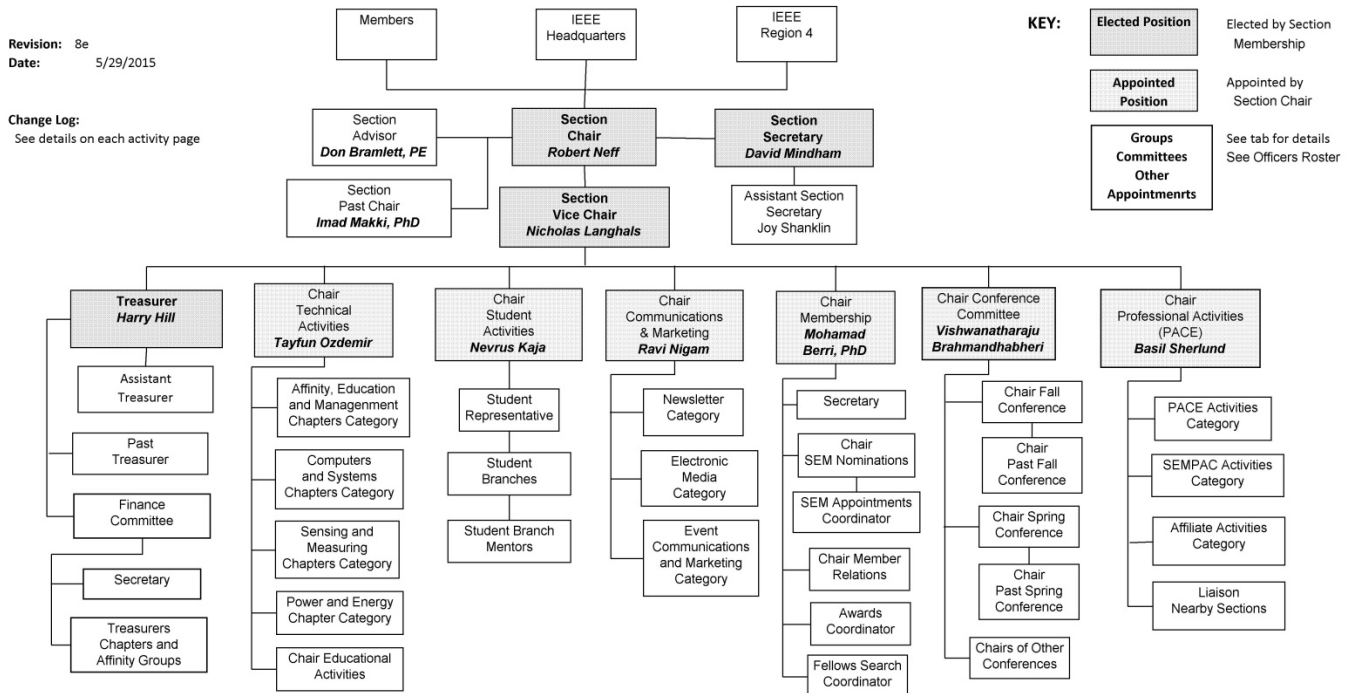
other chapters. In order to communicate the meeting dates of all the chapters, affinity groups etc., to our members to facilitate their attendance, leaders of the groups are requested to send meeting information to our webmasters for posting on section’s calendar.

More detailed information on meetings may be found by using the IEEE meetings site. This may be found through the IEEE SEM Website: <http://sites.ieee.org/sem/> and clicking on the **SEM meetings list** button near the bottom of the left hand banner.

Automatic e-mail notification of web updates may be received using the “**Email Notifications**” button at the top of the **SEM Tools/Links** side banner.

David Mindham - SEM Secretary

Current Organization - IEEE Southeastern Michigan Section (SEM)



Download the complete SEM Organization Chart, in PDF format, from the SEM Website at: www.ieee-sem.com. Then, click on “About SEM” Tab, followed by, click on “Current Officers”

Section Mission & Goals**Section Focus:**

The IEEE SEM Section Officers have reaffirmed the Mission and Goals of the section with the guidance of the Region 4 leadership. The Mission and Goals conform with those of IEEE worldwide.

You have probably seen the Mission and Goals before. However, it is important to keep these clearly in mind and remind ourselves often that this is what we are about and what we are trying to accomplish.

Section Mission

Inspire – Enable – Empower and Engage Members of IEEE at the local level.

For the purpose of:

- Fulfilling the mission of IEEE (...**foster technological innovation and excellence for the benefit of humanity.**),
- Enhancing the members' growth and development throughout their life cycle, and
- Providing a professional home,

Section Goals

- Increase member engagement,
- Improve relationships with and among members,
- Increase operational efficiency and effectiveness, within the section and its interfaces,
- Enhance collaboration – serve as the local face of IEEE to the community,
- Increase membership, and
- Ensure the collection of appropriate information necessary to assist the IEEE to become a data driven organization.

It is now the task of the section leadership to guide and coach all section officers and elements to focus their activities on achieving those goals.

SEM Monthly Meetings**Scheduled Meetings:**

The regular meetings of the SEM Leadership (Executive Committee) are scheduled well in advance to allow everyone to place them in their personal planning calendars, and then defend those dates against encroachment. (*Not always possible.*)

Two types of Monthly meetings are normally scheduled:

Monthly Teleconference / WebEx as well as:

Quarterly Face-to-Face (F2F). See schedule below.

Note: All IEEE meetings are '**Open**' **for all members to attend.**

The only caveat is that you please register using the specific meeting form on the vTools site at:

<https://meetings.vtools.ieee.org/main>

Registering will ensure there is sufficient space, refreshments and support for attendees.

Teleconference Schedule

(held from 12-1 p.m.):

- November 5, 2015
- December 2, 2015

F2F Meeting Schedule:

- January 7, 2016

More information for F2F meetings will be emailed in a timely manner before the meeting dates.

Consider checking for additional information as the meeting dates approach at the SEM website (<http://sites.ieee.org/sem/>). The links to the SEM Facebook or LinkedIn pages on the SEM website may also be checked for updates.

All the normally scheduled meetings of each of the other section chapters, affinity groups etc. are listed each month in the vTools area of our SEM website at:

http://ewh.ieee.org/r4/se_michigan/calendar1.php

The information is for: **Standing Committee Meetings**

Affinity Group Meetings

Technical Chapter Meetings

University Student Branch Meetings

Calendar Schedule:

Meetings are also announced on the SEM Calendar web page

<http://sites.ieee.org/sem/>

(Select the "**SEM Calendar**" button in the top row.)

Note: Often meetings of the Executive Committees of Chapters and Affinity Groups (and standing committees, of course) are listed only in the SEM Calendar page, since it is felt that most members would not wish to sit through administrative meetings.

However, if this type of meeting is just your 'cup of tea', then contact the officers of the unit that is conducting the meeting, and ask to be 'linked' into their teleconference, SKYPE, Google Hangout, or WebEx meeting. They will be happy to have you as a participant.

Many volunteers become interested in section activities when they get a chance to attend a monthly meeting and 'peek under the hood' to find out how the machinery of the section actually runs. It can be a rewarding experience.

David Mindham

SEM Section Secretary.

dmindham@ieee.org

Editors Corner

Previous editions in this series may be found on the IEEE SEM website at: <http://sites.ieee.org/sem/>. Click on the "Wavelengths" button in the top row of selections.

Comments and suggestions may be sent to the editor at k.williams@ieee.org. We also recommend a cc to the chair of the Communications and Marketing Committee, [Ravi Nigam](mailto:Ravi Nigam at: rnigam154934mi@comcast.net) at: rnigam154934mi@comcast.net.

We rely on our officers and members to provide the 'copy' that we finally present to readers of the newsletter.

The **Wavelengths Focus Plan and Personal Profiles** plan shown in the matrix below is presented to ensure coverage of section activities and events.

We try to complete the newsletter layout a week before the first of the month to allow time for review and corrections. If you have an article or notice, please submit it two weeks before the first of the month or earlier if possible.

The plan below relies on the contributions of our members and officers, so please do not be shy. If you have something that should be shared with the rest of the section, we want to give you that opportunity.

Co-Editors:

Harry Hill and I co-edit the monthly Wavelengths newsletter. However, we are always looking for members interested in helping to edit the newsletter. The process is always

more fun with more members to share the duties, and help keep the newsletter alive and lively by providing alternative points of view.

Review:

Each month Jim Woodyard takes time to review the current issue and try to keep us from too many errors of both English and content. Jim likes to work in the background but, a special thank you is deserved for his continuous efforts and dedication to the quality of the publication. Thank you Jim!

Join the Team:

If you feel you might like to join the team, or would like to train with us, please let us know.

h.s.hill@ieee.org

k.williams@ieee.org

Wavelengths Annual Publication Plan for Articles

Month	AG's	Ch's	Ch's	SB's	Special Notice	Reporting Events	Monthly Focus	Awards
Jan		1		OU	Future Cities Judges	Election Results	Resolutions	
Feb	Cons	2		MSU	Science Fair Judges	Officer's Welcome	Surviving Winter	Future Cities
Mar		3	13	EMU	Spring Conf. Flyer	Spring Conference	Spring Conference	Science Fair
Apr		4		U/M-D	National Engrs Wk.	Future Cities	Chapter Focus	GOLD Award
May	Life	5	14		Outstanding Eng Awd	Science Fair	Elections - Prep	New Fellows
Jun		6			IEEE-USA Apmts.	ESD Banquett	Leadership Skills	SEM Awards
Jul		7	15		Nominations Call	MD-Webcasts	Students Issues	Region 4
Aug	WIE	8			MGA - Apmts.	Tech-Webinars	Womens Issues	
Sep		9	16	LTU	Region 4 Apmts.	Engineers Day	Professional Skills	
Oct		10		U/M-AA	Fall Conf. Flyer		Fall Conference	
Nov	YP	11	17	WSU	ELECTIONS!		Humanitarian	
Dec		12		U/D-M	IEEE-Com Apmts.	Fall Conference	Happy Holidays	

Wavelengths Annual Publication Plan for Personal Profiles

Month	Profiles	Profiles	Committees
Jan	Chair	New Officers	
Feb	V-Chair	Secretary	Communications
Mar	Treasurer	Sect-Adviser	Conference
Apr	Stud-Rep		Education
May		Sr Officers	Executive
Jun			Finance
Jul			Membership
Aug			Nominations
Sep			PACE Activities
Oct			Student Activities
Nov			Technical Activities
Dec		Editor-WL	



Web & Social Sites**SEM Website**

<http://sites.ieee.org/sem/>

Each of the sites below may be accessed through the SEM Website:

Section Website Event Calendar

(Select the “SEM Calendar” button - top row.)

SEM Facebook Page

(Select the “” button under the top row.)

SEM LinkedIn Page

(Select the “” button under the top row.)

SEM Officers:

For a complete listing of all - Section - Standing Committee - Affinity Group - Chapter and Student Branch Officers, see the SEM Officers Roster on the SEM web page under the “About SEM” button and select “Current Officers”.

SEM On Line Community

<http://sem.oc.ieee.org>

Section Officers

Section Chair
Robert Neff

Section Secretary
David Mindham

Section Vice-Chair
Nicholas Langhals

Section Treasurer
Harry Hill

Standing Committees:

Section Adviser
Don Bramlett

Chair Communications & Marketing
Ravi Nigam

Chair Conferences
Raju Brahmandhabheri

Chair Educational Activities
Chaomin Luo

Chair Finance
Basil Sherlund

Chair Membership
Mohamad Berri

Chair Nominations
Kimball Williams

Chair Professional Activities
Basil Sherlund

Chair Student Activities
Nevrus Kaja

Student Representative
Samer Koda

Chair Technical Activities
Ali Eydgahi

Past Section Chair
Imad Makki



IEEE Southeastern Michigan

Visit Us on the Web at:

<http://sites.ieee.org/sem>

Leadership Meetings

All IEEE members are welcome to join us at any regularly scheduled meeting:

Advertising Rates

SEM Website & Newsletter
Advertising Rates / Month:

Our readers specify & purchase a wide range of electronic components, equipment and services.

Our sponsors come from industry, education, and nonprofit organizations.

Full page \$500,

Half page \$250

Quarter page \$125,

Eighth page \$65.

SEM Executive Committee Monthly Teleconferences:

- 1st Wednesday or Thursday of Each Month @ Noon
- Check the Section Web Calendar at:
<http://sites.ieee.org/sem/>
(Select the “SEM Calendar” button in the top row.)

SEM Executive Committee Face-to-Face Meetings:

- 1/Qtr. Usually held at U/M-D Fairlane Center
- Registration at:
<https://meetings.vtools.ieee.org/main>

SEM Standing Committee Meetings:

SEM Affinity Group Meetings:

SEM Technical Chapter Meetings:

SEM University Student Branch Meetings:

- Meeting schedules are announced on SEM Web Calendar
<http://sites.ieee.org/sem/>
(Select the “SEM Calendar” button in the top row.)
- Registration for all at:
<https://meetings.vtools.ieee.org/main>