



# Wavelengths

Volume 55 - Issue 5  
May 2015

## Contents

Section Chair's Message	1
<b>EMC Fest 2015</b>	2
<b>Zero Energy Buildings:</b>	3
<b>Training on Digital Modulations – Windsor Section:</b>	5
<b>Fall Section Conference:</b>	6
<b>Appointments &amp; Elections:</b>	7
<b>Other' Coming Events</b>	8
<b>Refer a Colleague:</b>	9
Executive Committee	10
Section Mission & Goals	11
SEM Monthly Meetings	11
Editors Corner	12
Section Officers	13
Web & Social Sites	13
Leadership Meetings	14
Advertising Rates	14

*Wavelengths Newsletter is produced by IEEE volunteers and published by Southeastern Michigan (SEM) Section for the members.  
Newsletter Archive: <http://sites.ieee.org/sem/>*

## Section Chair's Message

By the time you read this our Spring Conference will have happened. Plans are already underway for the Fall Conference and volunteers are needed to make it another success. Please see page # 6 for more details.

Every spring there are a variety of interesting presentations by our Chapters and Affinity Groups. This spring is no exception with events like EMC Fest, "The Grounds for Grounding" by Elya Joffe planned by the EMC Society (see page #2) and "Achieving Net Zero Energy Buildings – The Sustainable Future" offered by Women in Engineering, the Technology and Engineering Management Chapter (10) and the LTU Student Branch (see page #4).

All event organizers are requested to obtain budget approval, create a v-tools meeting notice and enter their events into the SEM calendar as part of their event planning. There is more on this in the following paragraph.

We encourage our neighboring Sections to publicize our events and continue to publicize their events. An example is "Training on Digital Modulation" taking place at University of Windsor by our neighbors, the Windsor Section (see page #5).



All Southeastern Michigan Section Chapter and Affinity Groups elected and appointed officers are requested to begin the Virtual Officers Training so you are better able to understand your position and to make you aware of available IEEE's support. The virtual format allows you to proceed through the training modules as you have time. They are available on our SEM web site [www.ieee-sem.org](http://www.ieee-sem.org) under the "SEM Tools/Links" column on the left side of the home page by clicking on "Training Materials" or at <http://sites.ieee.org/sem/about-sem/training/>.

I look forward to hearing from you and seeing you at our events.

As always, your ideas and suggestions are encouraged and welcome.

**Robert Neff**  
IEEE SEM Section Chair  
[RLNeff1@gmail.com](mailto:RLNeff1@gmail.com)

**EMC Fest 2015**

The Southeastern Michigan EMC Chapter (8)  
Proudly Presents:  
**EMCFest '2015**

**“The Grounds for Grounding”**

**A Tutorial and Exhibition**  
With Honored Guest Speaker

**Elya Joffe**  
**EMC Society Past President**

**Thursday, May 7, 2015**

At

**Embassy Suites**

**19525 Victor Parkway, Livonia, MI 48152**  
**734-462-6000**

*IEEE Electromagnetic Compatibility (EMC) Society.*

EMCFest'2014 Home Page:

<http://www.emcfest.org>

**Register On-Line!**



Mr. Joffe has been employed since 1987 by K.T.M. Project Engineering which is located in Israel He is V.P. of Engineering and a Senior EMC Engineering Specialist and Consultant. He holds a BScEE in Electrical Engineering from the Ben Gurion University in Israel. Additionally, Elya is a Registered Professional Engineer; iNARTE certified Senior EMC Engineer, ESD Control Engineer; EMC Master Design

Engineer; Chair of the Exemplar Global BoD; Immediate Past Chairman of the iNARTE Advisory Committee; and author of "Grounds for Grounding: A Circuit to System Handbook", published by John E. Wiley & Sons, 2009.

Mr. Joffe is Senior Member of IEEE; Past President of the EMC Society; Immediate Past President of the IEEE Product Safety Engineering Society; Past Chairman of the Israel IEEE EMC Chapter; and Member of the Board of Governors and VP for Conferences of the Society for Social Implications of Technology (SSIT).

**Program Outline - Thursday May 7, 2015**

7:30	<b>REGISTRATION, EXHIBITS &amp; CONTINENTAL BREAKFAST</b>
8:30	<b>Fundamental Concepts:</b> Paths of Current Return, Parasitic Paths, Grounds for Grounding and Why Grounding.
10:00	<b>Break &amp; Exhibits</b>
10:30	<b>Fundamental Grounding Schemes and The "Grounding Tree"</b>
12:00	<b>LUNCH</b>
1:00	<b>Ground Loops and their Mitigation (Who's afraid of the big bad (Ground) loops?):</b> Power Distribution vs. Grounding Schemes Interrelationships
2:30	<b>Break 7 Exhibits</b>
3:00	<b>Equipment and System Grounding Schemes:</b> Cable Signals and Shields' Grounding, Grounding-Related Case Studies, Summary and Wrap Up
4:30	<b>Ice Cream Reception</b>
5:00	<b>Close of EMCFest</b>

**FEE SCHEDULE**

Before April 24 2015

IEEE Members,	\$40
Non IEEE Members,	\$50
Students W/Student I.D.	\$25
Unemployed IEEE Members	\$25
Retired IEEE Members	\$25
CEU Certificate Only	\$25
<b>All after April 24th</b>	<b>\$100</b>

**For more details, and to register on-line, please visit the website at:**

[www.emcfest.org](http://www.emcfest.org)

**Zero Energy Buildings:**

**Achieving Net Zero Energy Buildings – The Sustainable Future**

*Co-sponsored by Women in Engineering and the LTU Student Branch & Chapter 10 (TEMS)*



**All are invited to this FREE event.**

Note: Enter parking log 'A' from 10 mile road.

Enter through the Architectural Building Breesway

Take elevator to floor 2. (Look for signs.)

This presentation meeting is hosted by the

**IEEE LTU Student Branch, SEM Women in Engineering and SEM Technology and Engineering Management Chapter (10)**

**When**

**Date: 13-May-2015**

**Time: 04:30PM to 07:00PM**

**Where**

**Lawrence Institute of Technology: Architectural Building**

**Room Number: Lear Auditorium:**

**21000 W 10 Mile Rd**

**Southfield, Michigan**

**United States 48075**[Click here for Map](#)

**No Admission Charge.**

**Registration**

Enter the link below in you web browser address window, or click the link below:

<https://meetings.vtools.ieee.org/m/34319>

[Click Here to Register](#)

## Speaker

**Diana Nash**

## Topic:

**Achieving Net Zero Energy Buildings – The Sustainable Future**

A very exciting project that GTC is working on is challenging our entire team's collective engineering, architectural and business skill sets, to collaborate with IBEW to convert their 1964 building into a Net Zero Energy building. This huge initiative brings all stakeholders together to deliver energy efficiency while encouraging technology growth in the energy efficiency market; creating jobs, recruiting talent & providing a unique Energy Demonstration Center that will serve as the community learning center.

## Biography:

Ms. Nash is a LEED® Accredited Professional for Commercial Interiors and is Founder and President of Green Team Coalition, LLC (GTC). She provides consulting to clients on facility energy issues and cost reduction while working to achieve goals such as Net Zero Energy (NZE) buildings. Ms. Nash was able to pull together a valuable team of engineers with exceptional skill sets to produce deliverables in the areas of technical energy and water consumption auditing. Through these platforms her team is able to collaboratively save significant dollars for their clients. Prior to forming Green Team Coalition, LLC, Ms. Nash was a Facilities Consultant for Newmark Knight Frank. Her previous experience was as Director of Business Development for a successful general contractor, where she was responsible for working with automotive companies. Ms. Nash holds a B.S. Degree in Economics and Labor Studies from

Eastern Michigan University. She also completed the Kerzner Project Management certification (PMBOK) at Michigan State University Executive Training Center.

## Agenda

**May 13, 2015 (Wednesday)**

- 4:30 Registration & Refreshments
- 5:00 Presentaiton (Ms Nash)
- 6:00 Networking & Refreshments
- 7:00 Adjourn

## Registration

Enter the link below in you web browser address window, or click the link below:

<https://meetings.vtools.ieee.org/m/34319>

[Click Here to Register](#)

## Training on Digital Modulations – Windsor Section:



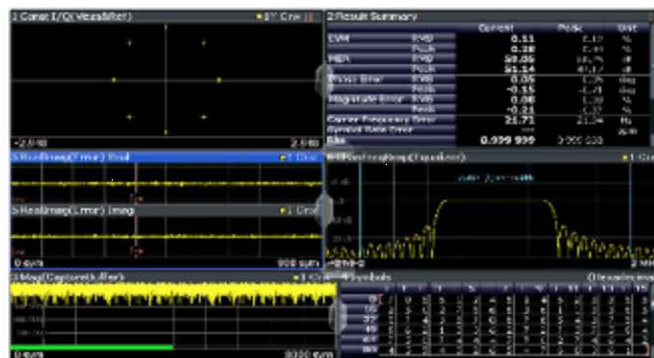
IEEE Windsor Section



ROHDE &amp; SCHWARZ

## Training on Digital Modulations

University of Windsor – May 6th



To register please register by using following link:

<https://meetings.vtools.ieee.org/m/34166>
**Training Overview**

Digitally modulated signals are very important for use in modern communication systems. There are several methods for encoding data digitally, and there are also important considerations such as data rate, the use of filters, and encoding methods. It is also important to understand how these signals can be distorted. This training provides a good understanding of the fundamentals and provides a hands-on session with vector signal generators and vector signal analyzers.

**Audience**

Anyone who would like to learn the fundamentals of digital modulation.

**Required credentials**

Elementary knowledge of spectrum analyzers and analog modulations.

**Training environment**

Theoretical presentations, followed by a practical session.

Maximum of 3 people per station; station consisting of a vector signal generator and a vector signal analyzer.

Have your lunch in company of the trainer. Training material and measurement results provided.

**Full day program (8:30am to 4:00pm)**

- 8:30am - Registration

- 9:00am - Theoretical presentation

Fundamental parameters of digital modulation schemes (modulation, data rate, filters, coding schemes)

Quality and performance measurements (EVM, BER, etc)

Principles and properties of OFDM

The use of different modulation schemes in common standards (LTE, GSM, WLAN, Bluetooth, etc)

- 12:00pm - Lunch

- 1:30pm - Practical session

Generation and analysis of different modulated signals (PSK, QAM, FSK)

Bit Error Rate measurement

Diagnosis of distorted signals

Analysis of an OFDM signal

**Fall Section Conference:**

When the call went out among the SEM Officers for a volunteer to lead the coming 2016 SEM Fall Section Conference, longtime volunteer **Basil Sherlund** stepped up and agreed to lead the effort. Basil wasted no time and immediately confirmed several of the significant elements in the overall planning 'Gantt Chart' as shown below:

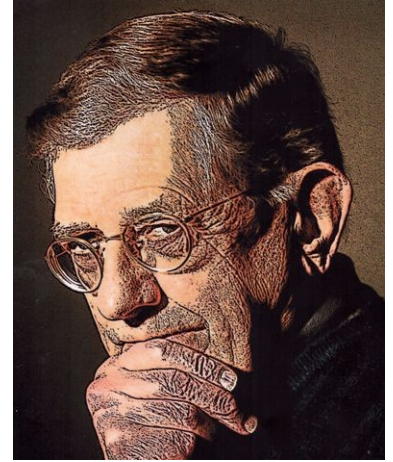
**Date:** November 10, 2015

**Location:** U/M Dearborn – Fairlane Conference Center

**Keynote Speaker:** Bob Neff – SEM Section Chair

**Topic:** "Autonomous Vehicles, Their Legacy and Future"

**Basil Sherlund** has 40 years of experience in Computer Design and Information Technology. As a professional he received a BS in Electrical Engineering, with honors, and a MS in Computer Science. He is a life member of Eta Kappa Nu, the electrical engineering honor society.



He is a former member of the executive board of the IEEE Software Engineering Standards Committee, the Technical Committee on Software Engineering and has held two offices and three chapter positions in Region 4, SEM and he is a member of the Educational Activities Committee for R4.

The Conference Committee, in support of Basil and the 2015 Fall Section Conference also need volunteers to help this event achieve its full potential as an educational and networking opportunity for all our Section members.

Anyone who wishes to help out with the planning and preparation for the Conference is encouraged to contact basil and discuss the positions on the planning Gantt Chart that he will be filling in the next few weeks.

If your interest is to be of help at the actual event, you are encouraged to contact Basil and let him know that you wish to assist on the day of the conference. He will then place you on a list for possible future assignments.

Either way, volunteering for action in conjunction with a Section Conference can be a unique and valuable experience.

-30-

**Appointments & Elections:**

**Appointments:**

With a large and diverse Section like ours, we experience what is referred to as a 'churn' among our officer ranks.

'Churn' implies that we have an officer body that is in constant evolution and growth. Because the experience of serving as an IEEE officer tends to prepare someone for greater responsibilities, many of our officers find themselves being handed job advancements that take them into more demanding positions.

When that happens, they often need to 'cut back' on their direct involvement in IEEE in order to address the new challenges of their new position. Since IEEE is a totally volunteer organization, we expect to have officers focus on other of their life demands. When that happens we look for replacements.

One of the most productive training grounds for increased job responsibilities is that of an IEEE Secretary. Because it is so successful at training new people for increased responsibilities, it is also one of the most often positions that needs to be filled.

Right now we have the following positions requiring a Secretary, and this may be just the opportunity you need to improve many of your administrative and communications skills. Please consider the following opportunities:

**Secretary Positions Open:**

- Section Assistant Secretary
- Section Finance Committee
- Communications Committee
- Membership Committee
- Nominations Committee
- Professional Activities

While the above positions with our Section Standing Committees only

requires as sincere interest and willingness to learn, the positions below also require membership in the individual Affinity Group or Technical Society that forms the base of the Geo-unit.

**These are:**

- Women In Engineering
- Chapter 3 (Vehicle Technology)
- Chapter 10(Management)
- Chapter 12(Control Systems)
- Chapter 13(Education)

**Training:**

It is possible that volunteering for a Secretarial position may be your first experience engaging in an IEEE committee or Geo-unit. While previous experience is always helpful, if you are just starting in a new position it is helpful to quickly review your past training, and go over any available training for the new position.

For an IEEE Secretary (Administrative Assistant) we have posted several training modules on the IEEE SEM Website in the form of PowerPoint and Voice over Power Point (VoPPT) modules. These may all be found on the SEM Website at:

<http://sites.ieee.org/sem/about-sem/training/>

I recommend at a minimum reviewing:  
 #32: [Secretary Controller of Operations](#), and  
 #42: [Suggestions for Leading a Committee](#)

32	Officers	8	Mgmt
----	----------	---	------

If you are interested in exploring your options for participation through one of these positions, please contact me:

**Kimball Williams**  
[k.williams@ieee.org](mailto:k.williams@ieee.org)  
 313-355-4396

**Nomination for Election:**

Now that our Spring Conference has concluded, we have time to turn our attention to nomination for officer elections for 2016.

Some of our members have commented in the past about beginning the nomination process "...in May when we don't hold the election until October or November..".

The IEEE Member and Geographic Activity Board through its "Operations Manual" gave us the overall guidelines for holding elections. In the first statement in that document, it states: "Six months prior to the date of election, the Section Nominating Committee Chair shall issue a "Call for Nominations" for all positions elected at-large to all voting members of the Section through an appropriate medium." Six months from an October or November election is now.

Nominations for election to posts at the Section and each Geo-unit (Chapter and Affinity Group) will be open in June. Watch for the e-notice and the article that will appear in the June Wavelengths Newsletter.

If you are interested in exploring your options for participation as an officer in the Section, contact the current officer in that position and discuss the duties and functions of the office with them. They will be the people in the Section with the most up-to-date knowledge of the requirements.

**Secretary Controller of Operations**  
 For the listing of current officers, see the Officer Roster PDF file on the SEM Website at:  
<http://sites.ieee.org/sem/about-sem/current-officers/>

**Other' Coming Events**

We try to publish IEEE events in several places to ensure that everyone who may want to attend has all the available relevant information.

**SEM Web Calendar:**

<http://sites.ieee.org/sem/>

Select "SEM Calendar" button in the top row of the website.

**SEM Web Meetings:**

<http://sites.ieee.org/sem/>

Select "SEM Meeting List" button in the left-hand column.

**vTools Meetings:**

<http://sites.ieee.org/vtools/>

Select "Schedule a Meeting" button in the left-hand column of buttons.

**Other Happenings:**

However, since IEEE members tend to have eclectic interests, we want to give everyone a heads up for some of the non-IEEE events that may be of interest.

Let us know if you have a special interest in a field that encourages technical study and learning, and wish to share opportunities for participation with members of the section.

Send the particulars to [k.williams@ieee.org](mailto:k.williams@ieee.org) and an announcement may be placed in the newsletter.

-----

**Links:**

Below are links to local SEM Clubs engaged in technical hobbies as well as links to sites that may be useful for locating clubs in the area.

**Amateur Radio Clubs in Southeastern t Michigan**

(This is a fairly comprehensive listing of all the 'Ham' clubs in SEM.)

<http://www.wa2hom.org/ham-radio-clubs-in-se-michigan/>

**Model RC Aircraft:**

<http://www.skymasters.org/>

**Model Rocketry:**

<http://team1.org/>

**Astronomy:**

<http://www.go-astronomy.com/astro-clubs-state.php?State=MI>

**Experimental Aircraft Association:**

<https://www.eaa.org/en/ea/ea-chapters/find-an-eea-chapter>

**Robots:**

<http://therobotgarage.com/about-us.aspx>

**Science Fiction Convention:****Great Lakes Comic-Expo**

Saturday, July 18, 2015 at  
Trinity Lutheran Church.  
38900 Harper Ave,  
Clinton Twp, MI 48036.

<http://www.greatlakescomicexpo.com/>

**Mad Science:**

<http://www.madscience.org/>

**ESD PE Review Class:**

[www.esd.org](http://www.esd.org)



## Refer a Colleague:

**Refer a Colleague, Get Great Merchandise**

In conjunction with IEEE-USA, we are pleased to continue this special offer for US members.

[Refer a colleague to join IEEE](#). They'll get a US\$25 discount off their first year membership, and you'll get a gift. But this discount expires on 28 February - submit your referrals now!

IEEE-USA gift items you can choose from include:

- Cooler backpack
- Computer backpack
- Portable battery charger
- Tablet case
- Portable speaker
- Parker pen and mechanical pencil set
- Parker ballpoint pen
- Travel coffee mug and tumbler set
- Golf balls
- Baseball hat
- Golf umbrella
- Travel umbrella

You will also be eligible to receive incentives through the IEEE Member-Get-a-Member (MGM) program.

How it works:

- Refer your colleague via the [online form](#).
- Your referral will receive an e-mail inviting them to join at a US\$25 discount off their first-year membership dues.
- This discount expires on 28 February.
- Your referral will provide your IEEE member number as they join.
- Within 1-3 weeks after your referral joins, you will receive an e-mail confirming your recruiting success, including a link to select your IEEE-USA merchandise item.
- You will receive a separate e-mail for each new member you recruit.

Please help spread the word and share your IEEE experience - no one knows how beneficial IEEE Membership is for technical and career development better than you, the member. [Refer your friends and colleagues today!](#)

Sincerely,

Elyn Perez

*IEEE Member & Geographic Activities*

Important to know: There is no limit to the number of merchandise items you can earn; as long as your referrals join as professional members. Student members and Society Affiliates are not eligible for this promotion. You also remain eligible for the [MGM incentive awards](#) given out once per year in September.

IEEE • 445 Hoes Lane, Piscataway, NJ 08854 USA

**Executive Committee**

The SEM Executive Committee is the primary coordination unit for Southeastern Michigan (SEM) IEEE operations. The basic organization chart below shows the 2015 arrangement of communications links designed to provide inter-unit coordination and collaboration.

The SEM Executive Committee meets in a teleconference each month on either the first Wednesday or first Thursday at noon. The specific meeting days, times, phone or WebEx numbers and log in codes are published on the IEEE SEM Website calendar: <http://sites.ieee.org/sem/> Click on the "Calendar" button in the top banner on the first page of the w.

If you wish to attend, or just monitor the discussions, please contact David Mindham, the section secretary at: [dmindham@ieee.org](mailto:dmindham@ieee.org) and request to be placed on the distribution list for a monthly copy of the agenda and minutes.

More meeting details are available on the next page of this newsletter.

**Other Meetings:**

Most of our members maintain memberships in one or more of the IEEE Technical Societies, which automatically makes them members of the local chapter which is affiliated with that society. As a result, they should receive notices of the local chapter meetings each month.

However, members of the section may have multiple technical interest and would like to have meeting information of other

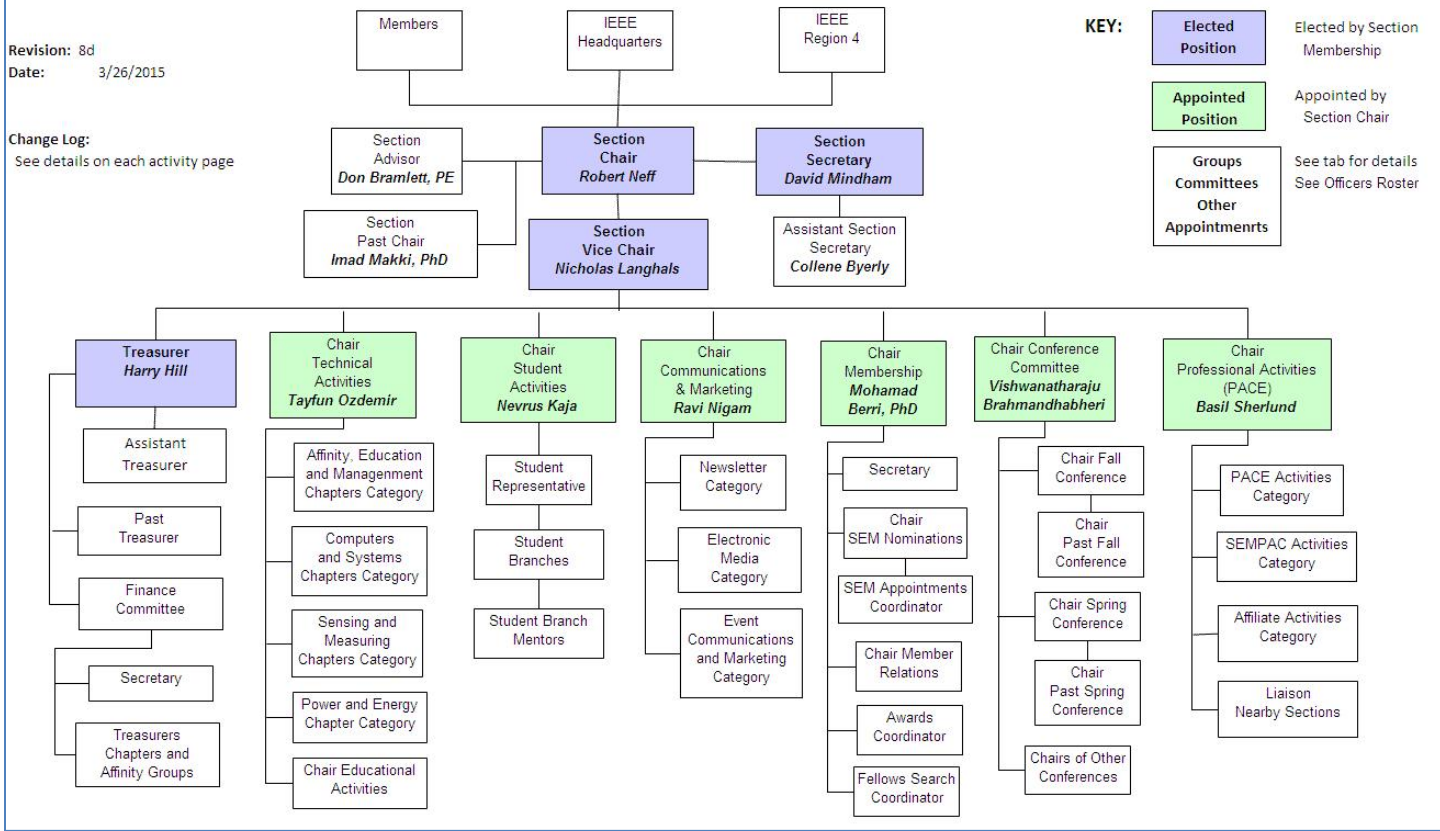
chapters. In order to communicate the meetings dates of all the chapters, affinity groups etc., to our members to facilitate their attendance, ur leaders of the groups are requested to send meeting information to our webmasters for posting on section's calendar.

More detailed information on meetings may be found by using the IEEE meetings site. This may be found through the IEEE SEM Website: <http://sites.ieee.org/sem/> and clicking on the SEM meetings list button near the bottom of the left hand banner.

Automatic e-mail notification of web updates may be received using the "Email Notifications" button at the top of the SEM Tools/Links side banner.

David Mindham - SEM Secretary

**Current Organization - IEEE Southeastern Michigan Section (SEM)**



Download the complete SEM Organization Chart, in PDF format, from the SEM Website at: [www.ieee-sem.com](http://www.ieee-sem.com) Then, click on "About SEM" Tab, followed by, click on "Current Officers"

**Section Mission & Goals****Section Focus:**

The IEEE SEM Senior Officers of the Section have reaffirmed the overall Mission and Goals of the Section, which align with the overall objectives of IEEE worldwide and with the guidance provided by our leadership in Region 4.

You have probably seen the Mission and Goals before. However, it is important to keep these clearly in mind and remind ourselves often that this is what we are about and what we are trying to accomplish.

**Section Mission**

Inspire – Enable – Empower and Engage Members of IEEE at the local level.

For the purpose of:

- Fulfilling the mission of IEEE (...**foster technological innovation and excellence for the benefit of humanity.**)
- Enhancing the members' growth and development throughout their life cycle
- Providing a professional home

**Section Goals**

- Increase member engagement,
- Improve relationships with and among members,
- Increase operational efficiency and effectiveness, within the section and its interfaces,
- Enhance collaboration – serve as the local face of IEEE to the community,
- Increase membership,
- Ensure the collection of appropriate information necessary to assist the IEEE to become a data driven organization.

It is now the task of the Section leadership to guide and coach all Section officers and elements to focus their activities on achieving those goals.

**SEM Monthly Meetings****Scheduled Meetings:**

The regular meetings of the SEM 'Leadership' (Executive Committee) are scheduled well in advance to allow everyone to place them in their personal planning calendars, and then defend those dates against encroachment. (*Not always possible.*)

Two types of Monthly meetings are normally scheduled:

**Monthly Teleconference / WebEx** as well as:

**Quarterly Face-to-Face.** (See Below)

**Note: All** IEEE meetings are '**Open**' for all members to attend.

The only caveat is that you please register using the specific meeting form on found on the vTools site at:

<https://meetings.vtools.ieee.org/main>

This will ensure we have sufficient space, refreshments and support for everyone who joins the meetings.

**Teleconference Schedule**

(held from 12-1 PM):

- **May 6, 2015**
- June 4, 2015
- August 5, 2015
- September 3, 2015
- November 5, 2015
- December 2, 2015

**F2F Meeting Schedule:**

- July 9, 2015
- October 7, 2015
- January 7, 2016

More information for the f2f meetings will be sent out as the dates are approached.

Keep in touch via the SEM Web site (<http://sites.ieee.org/sem/>) or use the links to the SEM Facebook or LinkedIn pages on the SEM Web page.

All the normally scheduled meetings of each of the other section chapters, affinity groups etc. are listed each month in the vTools area of our SEM website at:

[http://ewh.ieee.org/r4/se\\_michigan/calendar1.php](http://ewh.ieee.org/r4/se_michigan/calendar1.php)

These announcements refer to:

**Standing Committee Meetings:**

**Affinity Group Meetings:**

**Technical Chapter Meetings:**

**University Student Branch**

**Meetings:**

**Calendar Schedule:**

Meetings are also announced on the SEM Web page Calendar

<http://sites.ieee.org/sem/>

(Select the "SEM Calendar" button in the top row.)

**Note:** Often meetings of the 'Executive Committees' of Chapters and Affinity Groups (and standing committees, of course) are listed only in the 'SEM Calendar' page, since it is felt that most members would not wish to sit through the 'administrative' meetings.

However, if this type of meeting is just your 'cup of tea', then contact the officers of the unit that is conducting the meeting, and ask to be 'linked' into their teleconference, SKYPE, Google Hangout, or WebEx meeting. They would be happy to have you as a participant.

Many volunteers get interested in Section activities when they get a chance to attend a Monthly meeting and 'peek under the hood' to find out how the machinery of the Section actually runs. It can be a rewarding experience.

**David Mindham**

SEM Section Secretary.

[dmindham@ieee.org](mailto:dmindham@ieee.org)

-30-

**Editors Corner**

Previous editions in this series may be found on the IEEE SEM Web page at: <http://sites.ieee.org/sem/>. Click on the "Wavelengths" button in the top row of selections.

Comments and suggestions may be sent to the editor at [k.williams@ieee.org](mailto:k.williams@ieee.org). We also recommend a cc to the Chair of the Communications and Marketing Committee, **Chaitanya Setti** at: [chaitanyagini@ieee.org](mailto:chaitanyagini@ieee.org).

The newsletter does not have a staff of reporters to 'investigate' what is going on in the Section and write up informative articles.

We rely on our Officers and Members to provide the 'copy' that we finally present to our readers as the newsletter.

The **Wavelengths Focus Plan and Personal Profiles** plan shown in the matrix below is conceived as a method to ensure a reasonable coverage of normally expected Section activities and events.

We try to finish each issue assembly by the week before the first of each month to allow time for review and corrections. If you have an article or notice, please try to get it to us on time or early if possible.

The plan below relies on the contributions of our members and officers, so please do not be shy. If you have something that should be shared with the rest of the Section, we want to give you that opportunity.

**Co-Editors:**

I am selfishly looking for members interested in helping to edit the newsletter along with me who can learn the process, share in the duties, and help keep the newsletter alive and lively by providing alternative points of view.

If you feel you might be that person, or would like to train to become that person, please let me know.

[k.williams@ieee.org](mailto:k.williams@ieee.org)

-30-

**Wavelengths Focus Plan:**

Month	AG's	Ch's	Ch's	SB's	Specal Notice	Reporting Events	Monthly Focus	Awards
Jan		1		U/D-M	Future Cities Judges	Election Results	Resolutions	
Feb	Cons	2		MSU	Science Fair Judges	Officer's Welcome	Surviving Winter	Future Cities
Mar		3	13	U/M-AA	Spring Conf. Flyer	Spring Conference	Spring Conference	Science Fair
Apr		4		WSU	National Engrs Wk.	Future Cities	Chapter Focus	GOLD Award
May	Life	5	14	LTU	Outstanding Eng Awd	Science Fair	Humanatarian	New Fellows
Jun		6		SCC	IEEE-USA Apmts.	ESD Banquett	Leadership Skills	SEM Awards
Jul		7	15	U/W	Nominations Call	MD-Webcasts	Students Issues	Region 4
Aug	WIE	8		OU	MGA - Apmts.	Tech-Webinars	Womens Issues	
Sep		9	16	EMU	Region 4 Apmts.	Engineers Day	Professional Skills	
Oct		10		ITT	Fall Conf. Flyer		Fall Conference	
Nov	YP	11	17	U/M-D	ELECTIONS!			
Dec		12			IEEE-Com Apmts.	Fall Conference	Happy Holidays	

**Wavelengths – Personal Profiles:**

Month	Profiles	Profiles	Committees
Jan	Chair	New Officers	
Feb	V-Chair	Secretary	Communications
Mar	Treasurer	Sect-Adviser	Conference
Apr	Stud-Rep		Education
May		Sr Officers	Executive
Jun			Finance
Jul			Membership
Aug			Nominations
Sep			PACE Activities
Oct			Student Activities
Nov			Technical Activities
Dec		Editor-WL	



## Web & Social Sites

### SEM Website

<http://sites.ieee.org/sem/>

Each of the sites below may be accessed through the SEM Website:

### Section Website Event Calendar

(Select the “SEM Calendar” button - top row.)

### SEM Facebook Page

(Select the “” button under the top row.)

### SEM LinkedIn Page

(Select the “” button under the top row.)

### SEM Officers:

For a complete listing of all - Section - Standing Committee - Affinity Group - Chapter and Student Branch Officers, see the SEM Officers Roster on the SEM web page under the “About SEM” button and select “Current Officers”.

### SEM On Line Community

<http://sem.oc.ieee.org>

## Section Officers

### Section Chair

Robert Neff

### Section Secretary

David Mindham

### Section Vice-Chair

Nicholas Langhals

### Section Treasurer

Praveen Kumar

### Section Adviser

Don Bramlett

### Chair Communications & Marketing

Ravi Nigam

### Chair Conferences

Raju Brahmandhabheri

### Chair Educational Activities

Chaomin Luo

### Chair Finance

Basil Sherlund

### Chair Membership

Mohamad Berri

### Chair Nominations

Kimball Williams

### Chair Professional Activities

Basil Sherlund

### Chair Student Activities

Nevrus Kaja

### Student Representative

Samer Koda

### Chair Technical Activities

Ali Eydgahi

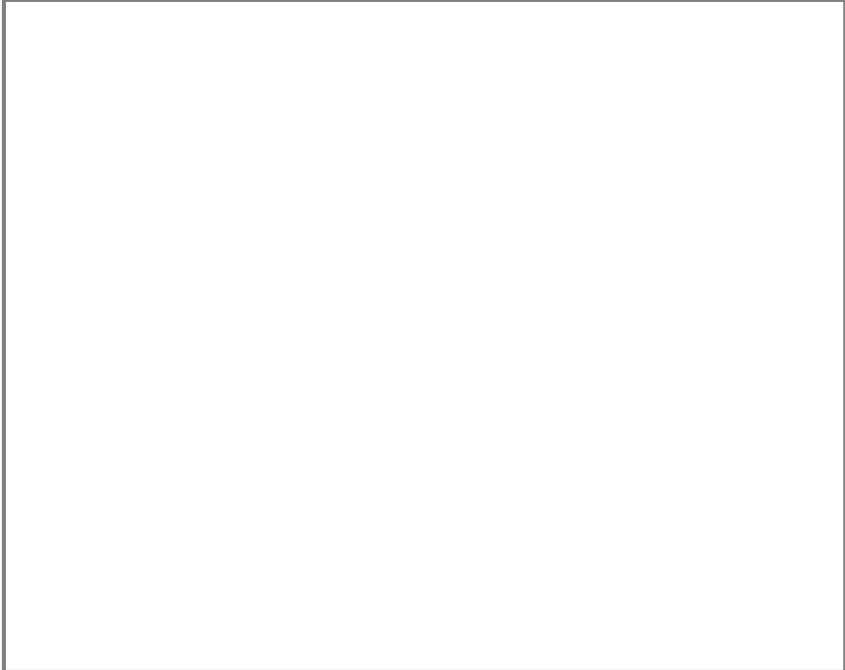
### Past Section Chair

Imad Makki



IEEE Southeastern Michigan

Visit Us on the Web at:  
<http://sites.ieee.org/sem>



### Leadership Meetings

All IEEE members are welcome to join us at any regularly scheduled meeting:

#### Advertising Rates

SEM Website & Newsletter  
Advertising Rates / Month:

Our readers specify & purchase a wide range of electronic components, equipment and services.

Our sponsors come from industry, education, and nonprofit organizations.

Full page \$500,

Half page \$250

Quarter page \$125,

Eighth page \$65.

#### SEM Executive Committee Monthly Teleconferences:

- 1<sup>st</sup> Wednesday or Thursday of Each Month @ Noon
- Check the Section Web Calendar at:  
<http://sites.ieee.org/sem>  
(Select the “SEM Calendar” button in the top row.)

#### SEM Executive Committee Face-to-Face Meetings:

- 1/Qtr. Usually held at U/M-D Fairlane Center
- Registration at:  
<https://meetings.vtools.ieee.org/main>

#### SEM Standing Committee Meetings:

#### SEM Affinity Group Meetings:

#### SEM Technical Chapter Meetings:

#### SEM University Student Branch Meetings:

- Meeting schedules are announced on SEM Web Calendar  
<http://sites.ieee.org/sem>  
(Select the “SEM Calendar” button in the top row.)
- Registration for all at:  
<https://meetings.vtools.ieee.org/main>