



Wavelengths

Volume 54 – Issue 12
December 2014

Contents

Section Chair's Message	1
Future Cities Judges:	2
2014 Election Results:	2
Congratulations "Windsor Section"	3
Embedded System Workshop: 4	
WIE 2014 Holiday Gathering: ... 5	
Amateur Radio License Classes:	6
Electricity Instructors Needed: 7	
2015 Officers	8
Executive Committee	9
Section Mission & Goals	10
SEM Monthly Meetings	10
Editors Corner	11
Section Officers	12
Web & Social Sites	12
Leadership Meetings	13
Advertising Rates	13

Wavelengths Newsletter is produced by IEEE volunteers and published by IEEE Southeastern Michigan (SEM) Section (<http://sites.ieee.org/sem>) for the Section members.

*Newsletter website Archive:
<http://sites.ieee.org/sem/about-sem/sem-history/wavelengths-magazine-archive/>
Email: wavelengths@ieee-sem.org*

Section Chair's Message

December Message:

Elections:

The election voting is closed but the processing of those results is not. Yes we can tally the votes but there are other items to confirm as part of the election process such as membership in that Chapter's society, membership dues up to date and for write-in's, are they willing to serve.

The section officer election results have been confirmed and are shown on page #2. All election results need to be confirmed by the ExCom at its next meeting. See more details on page #8.

Windsor Section Confirmed:

We congratulate our Windsor and Essex County neighbors in their petition and approval for Section status. This is a little bit like marrying off your daughter. On one hand we appreciate all the Windsor volunteers have done for our Section lately and over the years.

At the same time we are happy for their relationship with the Canadian Region 7 and status as a new IEEE Section. Please realize that we are here to support your efforts and welcome you and your guests to any and all our events.

More Volunteer Opportunities:

Being elected to a position is not the only way to volunteer here in Southeastern Michigan IEEE. We need to fill open positions in our current organization, our spring and fall Conference Committees and in our special projects areas. In the



Special projects areas please see the article about "Future Cities Judges Needed" on page #2 and for "Instructors Needed" for our elementary school age STEM efforts on page #7.

Chapter and Affinity Group Features in Wavelengths Newsletter:

Starting again in January we plan feature a SEM Chapter or Affinity Group leadership and activities in this newsletter. Your assistance in preparing articles for your chapter or interest group is greatly appreciated. These features attract new members to your group along with advertising your activities.

Please have a safe and happy holiday period. I look forward to hearing from you and seeing you at our events. As always, your ideas and suggestions are encouraged and welcome.

Robert Neff
IEEE SEM Section Chair

RLNeff1@gmail.com

-30-

Future Cities Judges:**IEEE-SEM SECTION SPECIAL AWARD JUDGES NEEDED FOR JANUARY 2015 FUTURE CITY COMPETITION**

by Don C. Bramlett, PE,
SMIEEE - IEEE/SEM Advisor

This is the fifteenth year that IEEE-SEM will provide a dedicated team of judges and a special professional organization award for the project having the most innovative application of electro-technology in the design of a city in the future. Judging for the 2015 Michigan Regional Future City Competition will be on Monday, January 26, 2015 at the Suburban Collection Showplace in Novi, just off I-96 on Grand River between Novi Road and Beck Road.

Orientation and breakfast for judges will start at 7:30 am. Judging will be from 9:00 AM to 11:00 AM, followed by lunch.

A complimentary continental breakfast and lunch are provided that day for the judges. This pleasurable and fulfilling task only takes half a day.

This is one of the premier pre-university programs for energized middle school students. Please volunteer to be among those to comprise the team of IEEE-SEM Section special award judges.

I encourage anyone who has an interest in the science and math education of our youth or an interest in pre-university education programs to consider being a judge at the Michigan Regional Future City Competition. IEEE Student Branch members as well as regular IEEE members have found this to be a fulfilling experience in past years. As a judge myself in previous years, I have found the experience of talking with the students, finding out their interests and observing their projects/presentations to be very rewarding.

So come out and spend the morning with us as we meet with some of the potential engineers, scientists and city planners of the future.

If interested in more information concerning being a member of the team of judges for the IEEE-SEM professional award at the Michigan Regional Future City Competition, contact Don Bramlett at (313) 235-7549 during normal weekday business hours, at my cell (313) 608-6223, or at home (734) 591-1452 or by email d.bramlett@ieee.org.

-30-

2014 Election Results:

The election this year was the smoothest I have seen. The new vTools election software was able to 'pull' the proper voters from the SAMIEEE database directly, eliminating what had taken hours in the past.

Results for our Section level officers are:

Section Chair

Robert Neff

Section Secretary

David Mindham

Section V-Ch.

Nicholas Langhals

Section Treasurer

Praveen Kumar

At the December 3 Noon Teleconference we expect final 'approval' of the Section election results by the assembled members of the Executive Committee. All our **current and elected officers are invited to attend.**

Contact David Mandham at: dmindham@ieee.org for meeting details.

See more about election on page 8.

-30-

Congratulations "Windsor Section"

Happy Birthday!

It is with great pleasure that we welcome our IEEE Windsor and Essex County members to the new "Windsor" Section.

At its most recent meeting on November 22, 2014, the Member Geographic Association (MGA) voted to set aside Windsor and Essex County as a new Section within Region 7 (Canada), independent from its previous alignment as part Region 4 (USA) Southeastern Michigan Section.

Background:

Since the events of 9/11 active participation for Canadian members in Southeastern Michigan Section IEEE activities has become difficult at best. Leadership in both Region 4 and Region 7 expressed concerns and discussed alternatives. One possible action to alleviate this situation would be to realign Windsor and Essex County with Region 7.

A survey of the wishes of all IEEE Canadian SEM members was requested by members of the Windsor and Essex County IEEE membership. The survey results confirmed the desire of the Canadian membership to align with Region 7.

Meanwhile, Region 4&7 leadership requested a meeting to seek the direct input from Windsor and SEM members on this proposal. That meeting convened on April 15, 2014, at the University of Windsor and gave representatives from Region 7 a chance to acquaint Windsor and Essex County members with an introduction to the services and options that would be available to them, if they were to become Region 7 members.

The meeting was attended by 33 Windsor IEEE members, along with:

Amir Aghdam, President of IEEE Canada,

Maike Luiken: Region 7 (Canada) Student Activities Chair

Cathie Lowell, Region 7 Administrator,

Don Bramlett: Region 4 Advisor to Southeastern Michigan Section,

Murray MacDonald, Chair of the London Section

The Region 7 officers explained the support and benefits available to Region 7 members as well as the particular support Canada provides to its student members.

Further discussion followed outlining the general options and requirements needed to align the Windsor and Essex county IEEE membership with IEEE Canada as well as ways and means to provide continued support from Region 4 & Southeastern Michigan Section.

Don Bramlett: Region 4 Advisor to Southeastern Michigan Section confirmed and supported the information provided and offered both Region 4 and SEM support for any decision made by Windsor members.

Near the conclusion of the meeting, **Dr. Esam Abdel-Raheem** of the University of Windsor declared his intention to pursue the options for a possible realignment of Windsor and Essex County with Region 7 as an independent Section. A committee of Windsor members was formed, and initial plans follow on activity agreed.

Moving Forward:

With the final approval vote of the MGA, the administrative detail work can begin to officially 'move' all the Windsor and Essex County members into the new Section. This is expected to require about one month for all the details to 'wash through' the system and the IEEE networked server systems.

This is actually good news, as it gives the new Windsor Section time to hold its 1st election, build its own Executive Committee and put together its initial set of Standing Committees. A preliminary scan of the members of the Section and their alignment with IEEE Technical Societies shows a good likelihood of quickly establishing at least two Chapters within the Section,

Computers and
Communications.

IEEE Windsor Section members wishing to work with **Dr. Abdel-Raheem** on this activity should contact him at: eraheem@uwindsor.ca

We look forward to hearing from the new Windsor Section officers soon as to their plans for 2015 organization and events. We also hope that as many of our SEM members as are able to visit Windsor will join with our Canadian members and help support the new Section and its activities.

Congratulations Windsor Section!

-30-

Embedded System Workshop:**Embedded System Workshop organized by Chapter V, Computers.**

A one day free embedded system workshop was held on Saturday, October 18, 2014. The event was attended by 152 engineers and students. The event was held at Oakland University from 9AM to 4 PM. Persons from south east Michigan, Mount Pleasant, Ann Arbor, Lansing, Toledo, Windsor, Canada, Kalamazoo, Indiana, Northern Kentucky University, Nunn Drive, Highland Heights, KY, Chicago etc. attended the event. There were 9 technical presentations. They attendees could interact with speakers and representatives from companies like, Vector, ETAS, IBM, Beningo Inc, and Delphi. This event was co-sponsored by Oakland University, GL-SPIN, Vector, IBM, ETAS, and Beningo Inc. This annual event is being held from 2003 and it is the 14th event. This event was coordinated by Professor Subramaniam Ganesan who is a professor at Oakland University and the chair of IEEE SEM computer chapter.



WIE 2014 Holiday Gathering:

IEEE South-East Michigan Women in Engineering 2014 Holiday Gathering - Enjoy Light Refreshments

4:30pm, 12/19/2014**Room 1D06-06, Cadillac Bldg. First Floor South****GM Warren Tech Center, 30001 Van Dyke Ave, Warren, MI 48093**(Enter Gate 9 off VanDyke, it is the 2nd building on your right after roundabout)

Presenter Celia Desmond IEEE Distinguished Speaker

Abstract: With the current reliance on communications and IT, many opportunities have opened for most businesses to operate without strong dependence on geography. This is enabling businesses to outsource some functions to companies that are not located nearby. It also enables staff to work from home or remote offices. Clearly there are many advantages to this, as it enables companies to use the best skills without geo constraints with much cost savings. It also creates many problems, especially for projects. This talk will look at some of the advantages of international projects, why these exist, and the problems which must be addressed by the project manager to improve chances of success.



Celia Desmond, Lead Project Manager for Echologics Engineering has established a PM Office for a rapidly growing company, where her team manages all proposals, contracts and processes for the project managers. She is also President of World Class – Telecommunications, which provides training in telecommunications management. Celia has lectured internationally on programs for success in today's changing environment. She recently completed a project converting the network of a major Canadian bank to an MPLS network. As a Director at Stentor Resource Center Inc., she was instrumental in establishing culture and new processes for service/product development and for project governance. She helped establish a development coaching program for employees at Stentor and Bell Canada. She coached project managers as they established a coaching network to build a new project management program for Stentor. At Bell Canada, Celia provided strategic direction to corporate planners, ran technology/service trials, standardized equipment, and provided technical and project management support to large business clients. She has held numerous senior management positions at IEEE including Project Director for Certification in Wireless Engineering Technology for IEEE, managing a team of over 200 people in 8 different development areas, Director of IEEE, IEEE Vice President – Technical Activities, President of IEEE Communications Society. President of IEEE Canada, and Region 7 Director, Division Director, Vice President Engineering Management Society, and IEEE Canada Foundation Board member and previous Donations Chair. Celia holds MSc. Engineering, B.Sc. Mathematics & Psychology, Ontario Teaching Certificate and PMP certification. Celia has taught at Ryerson School of Business, Stevens Institute of Technology, University of Denver and University of Toronto. She is author of Project Management for Telecommunications Managers (Springer). Her pocket book Project Management for Telecommunications Projects was published by Wiley in 2010.

Amateur Radio License Classes:

Amateur Radio License Classes (Ham Radio)



Monday Evenings at Caroline Kennedy Library
6:30 pm until 8:30 pm
March 2, March 16, March 30, April 6, and April 20.

These free classes are offered by the *Motor City Radio Club* and will help teens and adults who wish to prepare for the Amateur Radio License Examination.

On May 9 all students are invited to take the MCRC bi-monthly License Examinations in Taylor, MI. (The license examination fee is \$15.00 paid at the exam site on the day of the exam.)

We will be using *The No-Nonsense Technician Class License Study Guide* by Dan Romanchic.

It is a free download of 58 pages in PDF format available at www.kb6nu.com. Printed copies will be available at cost of \$6.00.

The ARRL license guide can also be purchased from the instructor at a cost of \$22.50.

REGISTRATION IS REQUIRED,

Stop at the Library Circulation Desk or call (313) 791-3802

Electricity Instructors Needed:

Beginning January 12 and alternative every other Monday evening at 7 PM, IEEE SEM volunteers are planning a series of "Fundamentals of Electricity" classes for young students, Grades 3, 4 & 5. These classes will be taught at the **Dearborn Heights Caroline Kennedy Library at 24590 George St, Dearborn Heights, MI 48127.**
[\(313\) 791-3800](tel:3137913800)

Each class will request students to review an 'on-line' introduction to the material to be covered at each lesson in order to support an initial 'review' of the materials high points and provide for a Q&A session. Then the "Hands on" portion of the event will conduct 'experiments' to demonstrate the theory and give the students a 'feel' for what the theory really means.

In order to support a reasonable class, we are seeking at least 1 instructor for each 4 students. Our intention is to hold a class size of no more than 20 to 24 students, for which we need to identify 5 to 6 instructors.

If you live or work near Dearborn Heights, and can devote some time on you Mondays in January – May (see the detailed schedule below) please contact **Kimball Williams** at k.williams@ieee.org and let us know of your availability.

FUNDAMENTALS OF ELECTRICITY

For Kids in Grades 3. 4. & 5

**Caroline Kennedy Library
2nd & 4th Monday Evenings
January 12 – May 11
7 PM**

These are hands-on workshops about electricity and electronics for children. Engineers from the IEEE will be working with small groups. There are 9 sessions planned. Details are available from the library.

Due to the nature of the topics and the need for group compatibility, these free workshops are limited to children in grades 3, 4, & 5. (Pre-Registration is Required!)

January 12, 2015 (Basics of Static Electricity)

January 26, 2015 (Direct Current and Batteries)

February 9, 2015 (Direct Current circuits and components)

February 23, 2015 (Permanent Magnetics and magnetic fields)

March 9, 2015 (Electromagnetics and magnetic forces)

March 23, 2015 (Frequency, Alternative Current and Electrical Safety)

April 13, 2015 (Radio Frequency and Crystal radios)

April 27, 2015 (Resonance and resonant circuits)

May 11, 2015 (Radio Astronomy)

2015 Officers

The election process for 2014 has run its course and we are busy tallying all the results and looking for volunteers to 'fill the gaps'. It is inevitable that some elected officers find they are unable to fill the office as they had planned

Not only immediately after the election but, throughout the year we encounter situations where life changes force a re-evaluation of our volunteer commitments. Jobs and employers change directions, overseas assignments take place more frequently in our 'international' business climate, families have new arrivals and deaths.

As changes occur, the Nominations and Appointments Committee continues to search for replacement volunteers to help keep the machinery of governance of the Section moving along.

It should be noted that we often 'elect' and/or 'appoint' more than one "Vice-Chair" to an Affinity Group or Chapter to handle the multitude of activities that in which a busy organization becomes involved. This is especially true of our "Joint" Chapters where more than one technical society makes up the Chapter. In this case, we recommend that there be one Vice-Chair for each constitute Society in the Chapter.

Current Election Status:

On December 3 at the next SEM Executive Committee teleconference we must provide the assembled officers with a draft 'Roster' of officers for the entire Section including all Standing Committees, Affinity Groups and Chapters for 'verification' before we officially 'register' changes with the IEEE and publish the full list to the Section at large.

If you would like to work with us to continue finding officer candidates and bringing them 'on board', please contact the Chair of the N&A Committee and volunteer.

We look forward to hearing from you soon.

k.williams@ieee.org
N&ACom Chair.

-30-

Executive Committee

The **SEM Executive Committee** is the primary coordination unit for Southeastern Michigan (SEM) IEEE operations. The basic organization chart below shows the 2014 arrangement of communications links designed to provide inter-unit coordination and collaboration.

The SEM Executive Committee meets in a teleconference each month on either the first Wednesday or first Thursday at Noon. The specific meeting days, times, phone or WebEx numbers and log in codes are published on the IEEE SEM Website calendar: <http://sites.ieee.org/sem/> Click on the 'Calendar' button in the top banner on the Website first page.

If you wish to attend, or just monitor the discussions, please contact David Mindham, the Section Secretary at:

dmindham@ieee.org and request to be put on the distribution list for a monthly copy of the agenda and minutes.

More meeting details are available on the next page of this newsletter.

Other Meetings:

Most of our members maintain memberships in one or more of the IEEE Technical Societies, which automatically makes them members of the local Chapter which is affiliated with that Society. As a result, they should receive notices of those meetings each month.

However, most of our members are not 2-dimensional beings, with only one focused interest. That means that they would likely find meetings of the other Chapters also of interest. In order to communicate those options to our members and facilitate their attendance we ask each of our

Chapters to send their meeting information to our Webmasters who post the meeting information on the Website Calendar.

More detailed information on meetings may be found by using the IEEE meetings site. This may be found through the IEEE SEM Website: <http://sites.ieee.org/sem/> and clicking on the **SEM meetings list** button near the bottom of the left hand banner.

You may also set up automatic e-mail notifications of web updates by using the **"Email Notifications"** button at the top of the **SEM Tools/Links** side banner.

David Mindham - SEM Secretary

-30-

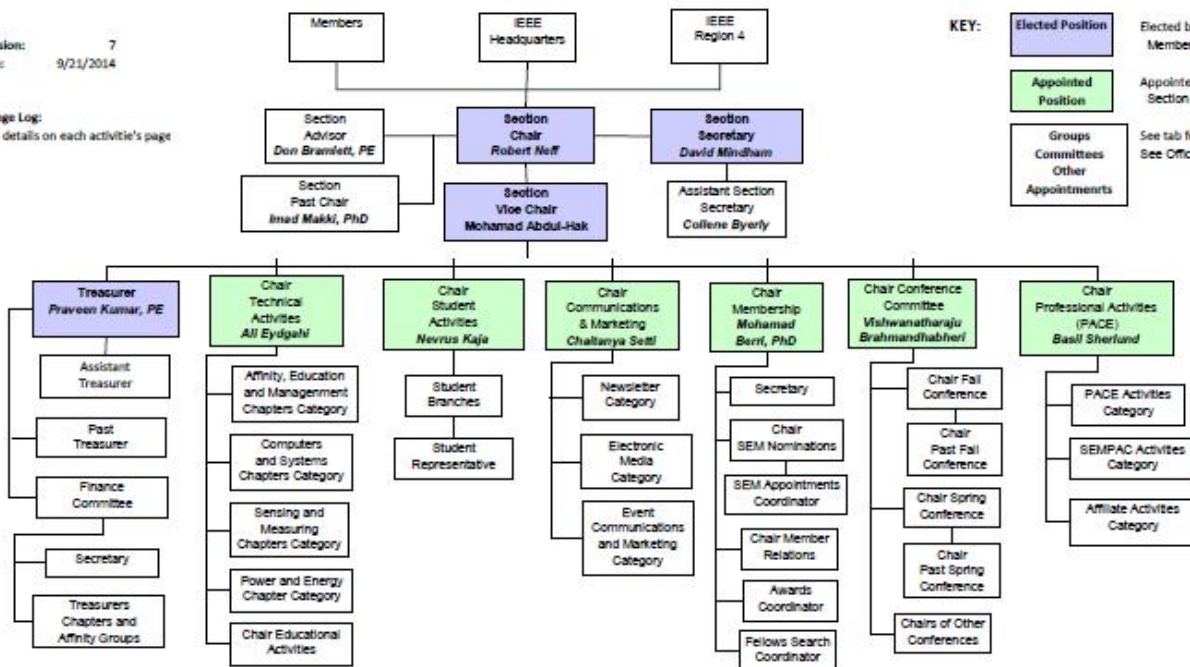
2014 Organization - IEEE Southeastern Michigan Section (SEM)

Revision: 7
Date: 9/21/2014

Change Log:
See details on each activity's page

KEY:

- Elected Position Elected by Section Membership
- Appointed Position Appointed by Section Chair
- Groups Committees Other Appointments See tab for details See Officers Roster



Section Mission & Goals**Section Focus:**

The IEEE SEM Senior Officers of the Section have reaffirmed the overall Mission and Goals of the Section, which align with the overall objectives of IEEE worldwide and with the guidance provided by our leadership in Region 4.

You have probably seen the Mission and Goals before. However, it is important to keep these clearly in mind and remind ourselves often that this is what we are about and what we are trying to accomplish.

Section Mission

Inspire – Enable – Empower and Engage Members of IEEE at the local level.

For the purpose of:

- Fulfilling the mission of IEEE (...**foster technological innovation and excellence for the benefit of humanity.**)
- Enhancing the members' growth and development throughout their life cycle
- Providing a professional home

Section Goals

- Increase member engagement,
- Improve relationships with and among members,
- Increase operational efficiency and effectiveness, within the section and its interfaces,
- Enhance collaboration – serve as the local face of IEEE to the community,
- Increase membership,
- Ensure the collection of appropriate information necessary to assist the IEEE to become a data driven organization.

It is now the task of the Section leadership to guide and coach all Section officers and elements to focus their activities on achieving those goals.

--30--

SEM Monthly Meetings**Scheduled Meetings:**

The regular meetings of the SEM 'Leadership' (Executive Committee) are scheduled well in advance to allow everyone to place them in their personal planning calendars, and then defend those dates against encroachment. (*Not always possible.*)

Two types of Monthly meetings are normally scheduled:

Monthly Teleconference / WebEx as well as:

Quarterly Face-to-Face.(See Below)

Note: All IEEE meetings are '**Open**' for all members to attend.

The only caveat is that you please register using the specific meeting form found at:

<https://meetings.vtools.ieee.org/main>

This will ensure we have sufficient space, refreshments and support for everyone who joins the meetings.

Teleconference Schedule

(held from 12-1 PM):

- Thursday, December 4th

F2F Meeting Schedule:

- 2015 meetings TBD

More information for the f2f meetings will be sent out as the dates are approached. Keep in touch via the SEM Web site (<http://sites.ieee.org/sem/>) or use the links to the SEM Facebook or LinkedIn pages on the SEM Web page.

All the normally scheduled meetings of each of the other Section 'units' are listed each month in the vTools area of our SEM website at:

http://ewh.ieee.org/r4/se_michigan/calendar1.php

These announcements refer to:

Standing Committee Meetings:

Affinity Group Meetings:

Technical Chapter Meetings:

University Student Branch Meetings:

Calendar Schedule:

Meetings are also announced on the SEM Web page Calendar

<http://sites.ieee.org/sem/>

(Select the "SEM Calendar" button in the top row.)

Note: Often meetings of the 'Executive Committees' of Chapters and Affinity Groups (and standing committees, of course) are listed only in the 'SEM Calendar' page, since it is felt that most members would not wish to sit through the 'administrative' meetings. However, if this type of meeting is just your 'cup of tea', then contact the officers of the unit that is conducting the meeting, and ask to be 'linked' into their teleconference, SKYPE, Google Hangout, or WebEx meeting. They would be happy to have you as a participant.

Many volunteers get interested in Section activities when they get a chance to attend a Monthly meeting and 'peek under the hood' to find out how the machinery of the Section actually runs. It can be a rewarding experience.

David Mindham

SEM Section Secretary.

dmindham@ieee.org

-30-

vTools Schedule:

Editors Corner

This is the 9th 2014 issue of the Wavelengths newsletter.

Earlier editions in this series may be found on the IEEE SEM Web page at: <http://sites.ieee.org/sem/>. Click on the "Wavelengths" button in the top row of selections.

Comments and suggestions may be sent to the editor at k.williams@ieee.org. We also recommend a cc to the Chair of the Communications and Marketing Committee, **Chaitanya Setti** at: chaitanyagini@ieee.org.

The newsletter does not have a staff of reporters to 'investigate' what is going on in the Section and write up informative articles.

We rely on our Officers and Members to provide the 'copy' that we finally present to our readers as the newsletter.

Wavelengths – Focus Plan:

Month	AG's	Ch's	Ch's	SB's	Special Notice	Reporting Events	Monthly Focus	Awards
Jan		1		U/D-M	Future Cities Judges	Election Results	Resolutions	
Feb	Cons	2		MSU	Science Fair Judges	Officer's Welcome	Surviving Winter	Future Cities
Mar		3	13	U/M-AA	Spring Conf. Flyer	Spring Conference	Spring Conference	Science Fair
Apr		4		WSU	National Engrs Wk.	Future Cities	Chapter Focus	GOLD Award
May	Life	5	14	LTU	Outstanding Eng Awd	Science Fair	Humanitarian	New Fellows
Jun		6		SCC	IEEE-USA Apmts.	ESD Banquett	Leadership Skills	SEM Awards
Jul		7	15	U/W	Nominations Call	MD-Webcasts	Students Issues	Region 4
Aug	WIE	8		OU	MGA - Apmts.	Tech-Webinars	Womens Issues	
Sep		9	16	EMU	Region 4 Apmts.	Engineers Day	Professional Skills	
Oct		10		ITT	Fall Conf. Flyer		Fall Conference	
Nov	YP	11	17	U/M-D	ELECTIONS!			
Dec		12			IEEE-Com Apmts.	Fall Conference	Happy Holidays	

Wavelengths – Personal Profiles:

Month	Profiles	Profiles	Committees
Jan	Chair	New Officers	
Feb	V-Chair	Secretary	Communications
Mar	Treasurer	Sect-Adviser	Conference
Apr	Stud-Rep		Education
May		Sr Officers	Executive
Jun			Finance
Jul			Membership
Aug			Nominations
Sep			PACE Activities
Oct			Student Activities
Nov			Technical Activities
Dec		Editor-WL	

The **Wavelengths – Focus Plan and Personal Profiles** plan shown in the matrix below is conceived as a method to ensure a reasonable coverage of normally expected Section activities and events.

We try to finish each issue assembly by the week before the first of each month to allow time for review and corrections. If you have an article or notice, please try to get it to us on time or early if possible.

The plan below relies on the contributions of our members and officers, so please do not be shy. If you have something that should be shared with the rest of the Section, we want to give you that opportunity.

Letter to the Editor:

We would like to see "Letters to the Editor" as a regular column but, of course that means that someone must send an e-mail to the editor...[hint!](#)

Co-Editors:

I am selfishly looking for someone interested in helping to edit the newsletter along with me who can learn the process, share in the duties, and help keep the newsletter alive and lively by providing an alternative point of view.

If you feel you might be that person, or would like to train to become that person, please let me know.

k.williams@ieee.org

-30-



Web & Social Sites

SEM Website

<http://sites.ieee.org/sem/>

Each of the sites below may be accessed through the SEM Website:

Section Website Event Calendar
(Select the “SEM Calendar” button - top row.)

SEM Facebook Page

(Select the “” button under the top row.)

SEM LinkedIn Page

(Select the “” button under the top row.)

SEM Officers:

For a complete listing of all - Section - Standing Committee - Affinity Group - Chapter and Student Branch **officers**, see the SEM Officers Roster on the SEM web page under the “About SEM” button and select “Current Officers”.

SEM On Line Community

<http://sem.oc.ieee.org>

Section Officers

Section Chair
Robert Neff

Section Secretary
David Mindham

Section Vice-Chair
Mohamad Abdul-Hak

Section Treasurer
Praveen Kumar

Section Adviser
Don Bramlett

Chair Communications & Marketing
Chaitanya Setti

Chair Conferences
Raju Brahmandhabheri

Chair Educational Activities
Chaomin Luo

Chair Finance
Bassel Atallah

Chair Membership
Mohamad Berri

Chair Nominations
Chaitanya Setti

Chair Professional Activities
Basil Sherlund

Chair Student Activities
Nevrus Kaja

Student Representative
Hanan Mekawy

Chair Technical Activities
Ali Eydgahi

Past Section Chair
Imad Makki



IEEE Southeastern Michigan

Visit Us on the Web at:
<http://sites.ieee.org/sem>

Leadership Meetings

All IEEE members are welcome to join us at any regularly scheduled meeting:

Advertising Rates

SEM Website & Newsletter
Advertising Rates / Month:

Our readers specify & purchase a wide range of electronic components, equipment and services. Our sponsors come from industry, education, and nonprofit organizations.

Full page \$500,

Half page \$250

Quarter page \$125,

Eighth page \$65.

SEM Executive Committee Monthly Teleconferences:

- 1st Thursday of Each Month @ Noon
- Check the Section Web Calendar at:
<http://sites.ieee.org/sem/>
(Select the "SEM Calendar" button in the top row.)

SEM Executive Committee Face-to-Face Meetings:

- 1/Qtr. Usually held at U/M-D Fairlane Center
- Registration at:
<https://meetings.vtools.ieee.org/main>

SEM Standing Committee Meetings:

SEM Affinity Group Meetings:

SEM Technical Chapter Meetings:

SEM University Student Branch Meetings:

- Meeting schedules are announced on SEM Web Calendar
<http://sites.ieee.org/sem/>
(Select the "SEM Calendar" button in the top row.)
- Registration for all at:
<https://meetings.vtools.ieee.org/main>