



Volume 54 – Issue 08
August 2014

Contents

Section Chair's Message	1
CAREER SKILLS WORKSHOP .	2
Great Lakes – Software Process Improvement Network	3
Consultants Workshop	4
Section Volunteer Options:	5
Bill Moylan – Fellows Search	6
Fellow Nomination Process	6
Senior Grade Elevation	6
Amateur Radio Course	7
Nominations & the Election Ballot Process	8
Executive Committee	10
Section Mission & Goals	11
SEM Monthly Meetings	11
Editors Corner	12
Section Officers	13
Web & Social Sites	13
Leadership Meetings	14
Advertising Rates	14

Wavelengths Newsletter is produced by IEEE volunteers and published by IEEE Southeastern Michigan (SEM) Section (<http://www.ieee-sem.org>) for the Section members.

*Newsletter website:
http://ewh.ieee.org/r4/se_michigan/newsletter
Email: wavelengths@ieee-sem.org*

Wavelengths

Section Chair's Message

August Message:

I have a suggestion, where do I send it?

I have a question. who do I ask?

I want to volunteer. who do I contact?

The starting point for answers to these questions is the current Organization Chart and Current officers roster available on the SEM web site at:

<http://sites.ieee.org/sem>.

Just click on the "About SEM" tab at the top of the home page and then the second item in the left column in "About SEM" page called "Current Officers". Your next click is either on the latest "Officers Roster" that contains contact information or on the "Organization Chart" to see how the committees and officers are organized.

While at the SEM web site, please visit the latest calendar of events by clicking on the "SEM Calendar" tab on the home page. Here are chapter and section events along with other area technical events we thought might be of interest to you.

Does it sound like you read this in a prior Chair's message?



Yes it does, I answer, but we still get the above questions so here it is again.

The Fall Conference is scheduled for November 13 in Sterling Heights. Oh, by the way, more details are available at the SEM web site right at the home page.

The other big topic is preparations and nominations for the fall elections. Please consider nominating someone or yourself for positions of interest to you.

Please see the "Nominations and Election Ballot" article on a subsequent page of this newsletter for more details.

We value your comments and ideas so if the above resources cannot answer your questions, please feel free to contact me.

Robert Neff
IEEE SEM Section Chair
RLNeff1@gmail.com

-30-

CAREER SKILLS WORKSHOP

Career Planning and Management, Soft Skills in the Workplace and Interpersonal Skills

Electrical and Electronic Engineers Creating Our Future

Saturday, September 13, 2014

Fairlane Center South (at University of Michigan - Dearborn)

Dining Room D

19000 Hubbard Road, Dearborn, MI, 48126

Tel: +1 313 583 6511

Workshop Website: <https://meetings.vtools.ieee.org/m/27077>

Workshop Overview

This workshop is designed to provide participants the tools to plan and manage their career. A successful career requires the ability to influence others. This workshop also provides participants the tools to develop leadership skills and techniques required to influence others, regardless of their authority over the other individual(s). Finally, the workshop provides participants the tools to develop skills for interpersonal effectiveness which allow them to lead or influence others competently.

This workshop is intended to help participants develop a career plan based on their skills and objectives. The participants learn how to manage their career using their career plan and to make adjustments as required. This workshop helps participants develop and improve interpersonal, group, team and leadership skills. The workshop is targeted for an audience interested in taking control of their career, wherever they may be in their career cycle. The format for the workshop includes the presentation of the core material and interactive participation; using exercises, case studies and open discussion.

Experienced engineers are well aware that high levels of career success depend on a balance of effective technical and non-technical skills. While some non-technical skills can be obtained in the formal classroom and laboratory, you need to find additional methods of enhancing interpersonal, teamwork, leadership, project management, and other people related skills. This workshop is meant to provide you a method for enhancing these skills.

A career plan, properly developed and managed, provides great satisfaction and greater success in your career and life. Leadership and "soft" interpersonal skills allow you to work more effectively with others, whether as part of a team or as a leader of the team. Leaders have vision and the ability to inspire others to accomplish great things. The skills developed in this workshop will help you achieve greater success in your career and life.

IEEE Members \$10

Non Members \$15

Student Dinner Table Sponsor (10 Students)\$5

Register at the Workshop web site <https://meetings.vtools.ieee.org/m/27077>

Meeting Agenda:

09:00 - 09:30 AM Registration and Continental Breakfast

09:30 - 10:00 AM Career Planning and Career Management – The Basics

10:00 - 10:30 AM Career Planning and Career Management – Exercise

10:30 - 10:45 AM Break All

10:45 - 12:00 AM Career Planning and Career Management – The Details

12:00 - 01:00 PM Lunch (provided)

01:00 - 02:15 PM Soft Skills in the Workplace

02:15 - 02:30 PM Break

02:30 - 03:45 PM Leadership - Interpersonal Skills

Join us for a fun and educational day!

Great Lakes – Software Process Improvement Network

Most of us have dabbled in software, or gotten caught up in the challenge and excitement of software development at one time or another. Here is your chance to take the next step:

About SPINs

From the Software Engineering Institute of Carnegie Mellon University:

“A Software and Systems Process Improvement Network (SPIN) is an organization of professionals in a given geographical area who are dedicated to the improvement of software and systems engineering.

Joining a SPIN recognizes one's commitment and loyalty to improving the state of software and systems engineering, as well as placing one in contact with a network of expertise within their community. It is a practical forum for the interchange of ideas, information, and mutual support. Each regional SPIN is slightly different, based on the vision of the founders and the needs of the community.

SPINs are made up of professionals from all sectors — industry, government, academia (including

students) — and include defense contractors, professional organizations, and independent consultants. Currently there are over 130 SPINs worldwide.”

The following are from the Great Lakes SPIN website. I suggest you do some ‘surfing’ on you own with these as hints to where to pick up the trail.

Industry Links and Events

Join the Detroit Java User Group for its upcoming meetings:

Details on the Detroit Java User Group website

<https://groups.yahoo.com/neo/groups/jug-detroit/info>

The SE Michigan Chapter of the IIBA has a full calendar of events posted.

Michigan Agile Enthusiasts has a full schedule of events as well.

The Software Engineering Institute The Software Engineering Institute (SEI) developed the Capability Maturity Model for Software (CMM) which describes “an evolutionary improvement path for software development.” SEI's site provides a

wide variety of resources and links for improving overall software process management.

SEI Announcement Sunset of CMMI v1.1

The Institute for Electronic and Electrical Engineers.

Visit this site for practical examples of process policies, process audit checklists, and more.

Software Development Magazine

Industry Conferences

Software Engineering Process Group Conference

Software Technology Conference

International Conference on Software Engineering

International Institute for Software Testing

Publications Have a look at SEI Monitor and at SEI's Newsletter for an article by our own Jeff Dalton.

-30-

Consultants Workshop

On 20 September, 2014 the Consultants Affinity Group will host a Consultants Workshop at U/M-D Fairlane Center.

One of our speakers, Greg Peters,



...has sent an article to 'whet' your interest in the workshop:

6 Questions for Better Referrals

By Greg Peters
(The Reluctant Networker)

When we do all the work to create a powerful network, our success is not just in the number of people we know, or even in the number of people who know us. We build a network in order to be able to call on it to accomplish significant activities. Sometimes that's about building a business, other times it's about finding a job or raising money for a worthy cause.

Whatever it might be, at some point we have to turn to our network for help. We have to ask. When that happens we want to have as good a chance of success as possible. With that in mind, here are some questions you should ask yourself before asking that person who's sitting across from you, drinking coffee.

1. Will the relationship support it? You probably wouldn't ask a complete stranger to borrow \$20, right? Similarly, any request you make cannot exceed the level of the relationship you've built.

2. Can they satisfy the request? It doesn't matter how good a person they are or how generous. If they don't have access to the resources you need, then this isn't the correct request for this person. You may need to come up with a different request that they may be more able to satisfy.

3. Will they satisfy the request? They can be the nicest person in the world. They have access to the resources. Your relationship is strong enough. Unfortunately, if they just aren't the kind of person who goes out of their way to help others, then they probably won't help you. They aren't mean or bad, they are just busy and focused on other things.

4. What have you done for them? This isn't a question about doing something so that they will feel indebted to you. This is about whether you are valuing the relationship enough. Have you done something for them recently?

5. Are you being specific enough? Don't just ask for "a job" or "a client". Be specific about your needs. A detailed description of your need is far more likely to help them come up with ways that they can help. "Anyone with a spine" might not ring a bell, but "A member of your country club who has been complaining about his back recently," might make them remember their buddy Tom who was doing that just the other day.

6. Are you asking for enough? This may seem odd, but many times people just don't ask for enough. When someone who is in your inner circle asks "What can I do to help you?", you have an opportunity for a bigger request. Maybe it's a personal introduction to the president of the

company, or maybe an endorsement to a potential client. If you ask for less than they are willing to give, then you are wasting an opportunity.

Asking for the referral can be a process that is full of anxiety. After all, you are essentially asking them if they like you enough to do a favor for you. If they say no, it's hard not to take it personally. Ask yourself these questions, though, and you'll improve your chances of success.

Greg Peters coaches individuals, trains staff, and presents to associations and other groups on how to get past their reluctance and start building better connections and stronger networks. He is the author of the audio program "Calm, Cool, and Connected at the Networking Event" and the acclaimed blog, "The Reluctant Networker".

Greg will be speaking at the IEEE Consultant Network Workshop on September 20th, 2014.

To learn more about the workshop contact our Consultants AG Chair:

Jacob Beningo at
jacob@beningo.com

-30-

Section Volunteer Options:

The Electronic Media Sub-Group of the **Communications & Marketing Committee** is looking for several new members who are willing to learn and grow into the following positions:

- LinkedIn Page Coordinator**
- Facebook Page Coordinator**
- ListServ Operations Coordinator**
- On-Line-Community Coordinator**

Each of these positions will be an active function with significant responsibilities to maintain and facilitate communications among our members.

Interested members should use the link below to indicate your interest, and the Nominations and Appointments Committee will contact you:

<https://ieeefluidsurveys.com/s/semcommittee/?code=>

-30-

The **Technical Activities committee** led by Doctor **Ali Eydgahy** is seeking of experienced IEEE members to serve as 'Mentors' to help guide and encourage Chapters in our Section to achieve their full potential.

Each of these officers work with the leadership of the individual Chapters and Affinity Groups (Units) in their "Cluster" as a mentor to promote, encourage and ensure effective functioning and reporting.

We currently are searching for an officer to coordinate the **Computers and Systems group**:

- Ch 1 Signal Processing / Circuits & Systems / Information Theory.
- Ch 3 Aerospace & Electronic Systems / Communications.
- Ch 5 Computers
- Ch 14 Robotics & Automation
- Ch 16 Computational Intelligence / Systems, Man and Cybernetics.

In essence, they will serve as a 'coach' for the Unit officers.

Interested members should use the link below to indicate your interest, and the Nominations and Appointments Committee will contact you:

<https://ieeefluidsurveys.com/s/semcommittee/?code=>

-30-

Secretary Opportunities:

Several of the IEEE SEM Committees are in need of Secretaries.

At this time we are looking for several members who are willing to learn and grow into the Secretary positions with the following

- Technical Activities Committee,
- Education Committee,
- Communications and Marketing Committee,
- PACE Committee
- Membership Committee,
- Nominations and Appointments Committee,

Each of these positions will be an active function with significant responsibilities to maintain and facilitate communications among our members.

We are contacting our members who have are not members of any technical Society first, since participation in a Committee does not require alignment with a society as a requisite factor.

Interested members should use the link below to indicate your interest, and the Nominations and Appointments Committee will contact you:

<https://ieeefluidsurveys.com/s/semcommittee/?code=>

-30-

Bill Moylan – Fellows Search

Fellow Nomination Process



William “Bill” Moylan fills the post of New Fellows Search on the Membership Committee. A Life Member of IEEE he is the semi-retired principal of Moylan Engineering Associates a consulting firm he founded in 1974 to specialize in electric power system studies.

A graduate of the University of Detroit, he is a registered Professional Engineer and member of MSPE and ESD.

A longtime member of the Industry Application Society and its Industrial and Commercial Power Systems Department, Bill was elevated to the grade of Fellow “for leadership in the development of standards for power systems for industrial plants” in 1997. He served as a Member of the IEEE-Standards Association’s Standards Board and its Review Committee.

From 2007 through 2009 he served as a member of the IEEE Fellow’s Committee, the select international group which performs the final evaluation in choosing which nominees are to be elevated to Fellow Grade.

(Text of Fellow Nomination Article from July 2014 issue IA Magazine)

The task of nominating a Senior Member for Fellow grade got easier with the new Fellow On-line System.

Multiple upgrades were incorporated, but three main enhancements will please nominators. After a nominator logs in the system, the first requirement will be to input the nominee’s member number. Entering this information will immediately let the nominator know if the nominee meets the requirements of being an active IEEE Senior or Life Senior Member and if the nominee has been a member in good standing for five years or more. If a nominee is ineligible, the system will prevent the nominator from filling out the entire form and avoid any unnecessary time.

Another new feature that’s required is inputting the member number of the references. The nomination must include at least five, but no more than eight references who are IEEE Fellows.

Entering this information will immediately inform the nominator, if a reference is eligible or not.

The best feature is allowing nominators the capability to make changes to main text, update e-mail addresses, add and delete reference and endorsement names, and to delete nominations they prepared out of the system up to the 1 March deadline.

Providing nominators this kind of flexibility will give them the opportunity to prepare a better nomination.

After the deadline has been reached, the system will authenticate all the data and verify that each nomination package is complete.

As soon as this process is finished, a confirmation will be sent to the nominator letting them know whether the nomination will or will not be considered.

The system is now open and ready to accept nominations for the class of 2016. Starting the process early will alleviate last minute issues.

You can visit the Fellow Web Site at www.ieee.org/fellows, then click “Online Nomination Form” to begin.

Rosann Marosy

Manager, IEEE Fellows Activities

SEM Members seeking advice on improving a nomination for fellow grade should feel free to contact Bill Moylan as his email address: w.j.moylan@ieee.org.

-30-

Senior Grade Elevation

If you are interested in becoming a senior member, you may send your CV to Mohamad Berri at mberri@ieee.org and Mohamad will initiate your online application and provide you with the detailed process including two references that will support completing your application. For more detail [Review complete Senior member requirements.](#)

-30-

Amateur Radio Course

For many of us in the IEEE we got our early 'start' in developing an interest in electronics and electrical engineering when we became involved in Amateur Radio. Since this has become the 'entry point' for a surprisingly large percentage of EE's over the years, it is only right that we continue to support this 'hobby' as part of our "STEM" and outreach functions.

So, for those who have not yet had the chance, or if you know some young adult who may be on the verge of making a career decision, and some actual involvement with electronics in practical application may be the key to helping them make a decision, please note the following:

The Hazel Park Amateur Radio Club will host a

Technician Class Amateur License Course

WHEN:

Mondays, from September 8, 2014 to November 10, 2014 (excluding 10/27)

TIME: 7 PM to 9 PM

WHERE: Macomb Intermediate School District Building (MISD)

44001 Garfield Rd.

Clinton Twp, MI 48038

(North of 19 Mile Rd, West side of Garfield)

First Session:

Room 104. Park in South Lot

INSTRUCTORS:

- Rich Urbano, KC8WPW, and
- Walt Carter, KD8LWC

COST:

FREE Instruction.

License Manual: \$25 Cash Only— (includes large laminated Band Plan)—

Available from instructors at first session.

FCC License Exam

(held at Last Session) **(\$15 fee)**

Registration: Pre-registration is *Necessary*, by August 15, 2014

This class is for Adults Only, 18 and over

Morse Code is no longer required for Amateur Radio Licensing!

Contact: Rich Urbano, KC8WPW@arrl.net

-30-

Nominations & the Election Ballot Process

We have now passed the ½ point in the Section calendar year and are well on the road to assembling the ballots for officer elections to the Section, the Affinity Groups and our Technical Chapters.

The IEEE Member and Geographic Activities organization (MGA) has established a recommended schedule for implementation of a Section election, and we are doing our best to align with that schedule.

In order assist the elements in our Section to complete this process in a timely manner we will be updating you each month with the current status of election nominations and finally the election as collected in our vTools survey system.

All the officer positions within our Section elements are collected in the survey form which identified all the elements and officer position in an on-line form that anyone in the Section can access.

Officer Positions:

All of our Section elements have the same ballot election positions

- **Chair**
- **Vice-Chair**
- **Secretary**
- **Treasurer**

Each of these positions is elected for a 1 year term, with the possibility of reelection the following year.

MGA recommends that no officer hold an elected position for more than 3 consecutive years. This is to encourage younger officers to 'step up' to the learning experience of holding an office and also to encourage our more senior volunteers to become 'mentors' of the new officers and to themselves 'step up' to more responsible positions in the Section, the Region and in the upper MGA and TAB organizations.

Requirements:

The MGA insists that all officer candidates share some common characteristics.

All candidates must:

- *Be a paid up "Member". (You will verify that by submitting your **member number** with your application in the survey).*
- *Hold member grade of Graduate Student or higher.*
- *To be a candidate for an Affinity Group (AG) or Chapter (Ch) office, you must be a member of that AG or Ch primary organization.*

The software system is set up to evaluate these requirements as a first level check of a candidate's qualifications.

If one of these qualifications is not met, the candidate is invalidated for that position.

The complete listing of all the officer positions in Southeastern Michigan Section may be found by opening the SEM Website at:<<>>

Use the Top Banner, and click on the "About SEM" button. Then in the side bar that shows up, click on the "Current Officers" button. In the central page, note the list of officer rosters and click on the most recent.

Alternatively, use the link below, and you should be presented with the current Officer Roster.

http://sites.ieee.org/sem/files/2012/09/Officers_Roster_IEEE_SEM_5_23_2014.pdf

The complete list of Affinity Groups and Technical Societies is shown in the title block with each of the relevant SEM elements. If you are in doubt as to whether or not a particular Chapter or AG represents a Society, you may find that information in the Officer Roster.

It should be noted that we often 'elect' and 'appoint' more than one "Vice-Chair" to an Affinity Group or Chapter to handle the multitude of activities that in which a busy organization becomes involved.

Election Nominations Survey Site:

In order to either nominate yourself for an officer position, or to nominate someone else for election to a position, open the vTools Survey site at:

<https://ieee.fluidsurveys.com/s/SEM-2015-Election-Nominations/>

Be aware that one of the first items you will need to use the survey is either your **member number**, or the member number of the person whom you are nominating for election.

Current Nominations Status:

On the next page we are publishing the charts of the current level of nominations for Affinity Group and Chapter officer nominations. If there is a "1" in a cell, then there is at least one candidate for that office. (MGA recommends we find 3 candidates for each office.)

If you are a current holder of an officer position in an Affinity Group or Chapter, please be aware that a nomination for continuing in your office is NOT automatic! You MUST either self-nominate for election in September, or have someone else nominate you for your office, or for another office in the Section.

We look forward to hearing from you soon.

-30-

Chapter & AG Offices w/Minimum # of Candidates

Ch's & AG's	Chair	Vice Chair	Secretary >	Treasurer	Name
Cnslt	1			1	Consultants Network
LIFE	1				Life Members
WIE					Women In Engineering
YP					Young Professionals
1	1	1			Circuits & Systems, Signal Proc., Info Th.
2					Vehicular Technology
3					Aerospace & Elec. Sys., Communications
4					Trident (Ant, Elect Dev., uWave, Photo)
5	1	1		1	Computers
6					Geoscience & Remote Sensing
7	1				Power Engineering, Industrial App.
8	1			1	Electromagnetic Compatibility (EMC)
9					Power Electronics, Industrial Electronics
10					Engineering Management
11	1				Eng. in Medicine & Biology
12					Control Systems
13					Education
14					Robotics & Automation
15					<< Open Slot >>
16	1				Computational Intelligence / Sys.Man.Cyber.
17	1				Nano Technology Council
SEM	1	1			SEM (Section)
					17 Chapter & AG Offices w/ min # of candidates
					84 Total Offices to fill
					20% Percent Filled

Chapters & AGs w/# of Candidates for Each Office

Ch's & AG's	Chair	Vice Chair	Secretary >	Treasurer	Name
Cnslt	1	0	0	1	Consultants Network
LIFE	2	0	0	0	Life Members
WIE	0	0	0	0	Women In Engineering
YP	0	0	0	0	Young Professionals
1	1	2	0	0	Circuits & Systems, Signal Proc., Info Th.
2	0	0	0	0	Vehicular Technology
3	0	0	0	0	Aerospace & Elec. Sys., Communications
4	0	0	0	0	Trident (Ant, Elect Dev., uWave, Photo)
5	1	3	0	1	Computers
6	0	0	0	0	Geoscience & Remote Sensing
7	1	0	0	0	Power Engineering, Industrial App.
8	1	0	1	0	Electromagnetic Compatibility (EMC)
9	0	0	0	0	Power Electronics, Industrial Electronics
10	0	0	0	0	Engineering Management
11	1	0	0	0	Eng. in Medicine & Biology
12	0	0	0	0	Control Systems
13	0	0	0	0	Education
14	0	1	0	0	Robotics & Automation
15					<< Open Slot >>
16	1	0	0	0	Computational Intelligence / Sys.Man.Cyber.
17	1	0	0	0	Nano Technology Council
SEM	1	2	0	0	SEM (Section)
					22 Canidates to date

Groups	Units	23-Apr	30-Apr	7-May	14-May	21-May	28-May	4-Jun	11-Jun	18-Jun	25-Jun	2-Jul	9-Jul	16-Jul	23-Jul	30-Jul	6-Aug	13-Aug	20-Aug	27-Aug	3-Sep	10-Sep	17-Sep	24-Sep	1-Oct	8-Oct	15-Oct	22-Oct	29-Oct	5-Nov	12-Nov	19-Nov	26-Nov	3-Dec	10-Dec	17-Dec	
0	Section	N						CN							BB							LB					RR										
1	Chap10	N						CN							BB								LB					RR									
1	Chap13		N						CN							BB								LB					RR								
1	Cons.			N						CN							BB							LB					RR								
1	LIFE				N						CN							BB						LB					RR								
1	WIE					N						CN							BB						LB					RR							
1	YP						N						CN							BB						LB				RR							
2	Chap1	N						CN							BB									LB				RR									
2	Chap14		N						CN							BB								LB					RR								
2	Chap16			N						CN							BB								LB				RR								
2	Chap3				N						CN							BB							LB				RR								
2	Chap5					N						CN							BB						LB				RR								
2	Chap11	N						CN							BB									LB				RR									
3	Chap17		N						CN							BB									LB				RR								
3	Chap4			N						CN							BB								LB				RR								
3	Chap6				N						CN							BB							LB				RR								
3	Chap8					N						CN							BB						LB				RR								
4	Chap12	N						CN							BB										LB				RR								
4	Chap2		N						CN							BB									LB				RR								
4	Chap7			N						CN							BB								LB				RR								
4	Chap9				N						CN							BB							LB				RR								
5	Chap15																																				
		Nominations				Capture Nominations				Build Ballots				Launch Ballots				Report Results																			
										Breather								Report to Section Executive Committee																			
																		Update vTools Officer Report for all Units																			

As you can see from the chart above, we have concluded our first round of "Calls" for SEM Unit nominations. We will shortly follow with "Reminder" messages to all the Affinity Group and Chapter members. Our original plan was that by mid-July we would begin to build the actual

'Ballots' for each SEM Unit in preparation for an official "Launch" by mid-September. **We do not yet have sufficient candidates to begin that process.** We are conducting the election in a "staggered" launch of individual SEM Units because the launch of so many

ballots at the same time in the past has confused and frustrated many members. We hope this process will help make the process more understandable for all concerned.

Executive Committee

The **SEM Executive Committee** is the primary coordination unit for Southeastern Michigan (SEM) IEEE operations. The basic organization chart below shows the 2014 arrangement of communications links designed to provide inter-unit coordination and collaboration.

The SEM Executive Committee meets in a teleconference each month on either the first Wednesday or first Thursday at Noon. The specific meeting days, times, phone or WebEx numbers and log in codes are published on the IEEE SEM Website calendar: <http://sites.ieee.org/sem/> Click on the 'Calendar' button in the top banner on the Website first page.

If you wish to attend, or just monitor the discussions, please contact David Mindham, the Section Secretary at:

dmindham@ieee.org and request to be put on the distribution list for a monthly copy of the agenda and minutes.

More meeting details are available on the next page of this newsletter.

Other Meetings:
Most of our members maintain memberships in one or more of the IEEE Technical Societies, which automatically makes them members of the local Chapter which is affiliated with that Society. As a result, they should receive notices of those meetings each month.

However, most of our members are not 2-dimensional beings, with only one focused interest. That means that they would likely find meetings of the other Chapters also of interest. In order to communicate those options to our members and facilitate their attendance we ask each of our

Chapters to send their meeting information to our Webmasters who post the meeting information on the Website Calendar.

More detailed information on meetings may be found by using the IEEE meetings site. This may be found through the IEEE SEM Website: <http://sites.ieee.org/sem/> and clicking on the **SEM meetings list** button near the bottom of the left hand banner.

You may also set up automatic e-mail notifications of web updates by using the **"Email Notifications"** button at the top of the **SEM Tools/Links** side banner.

David Mindham - SEM Secretary

-30-

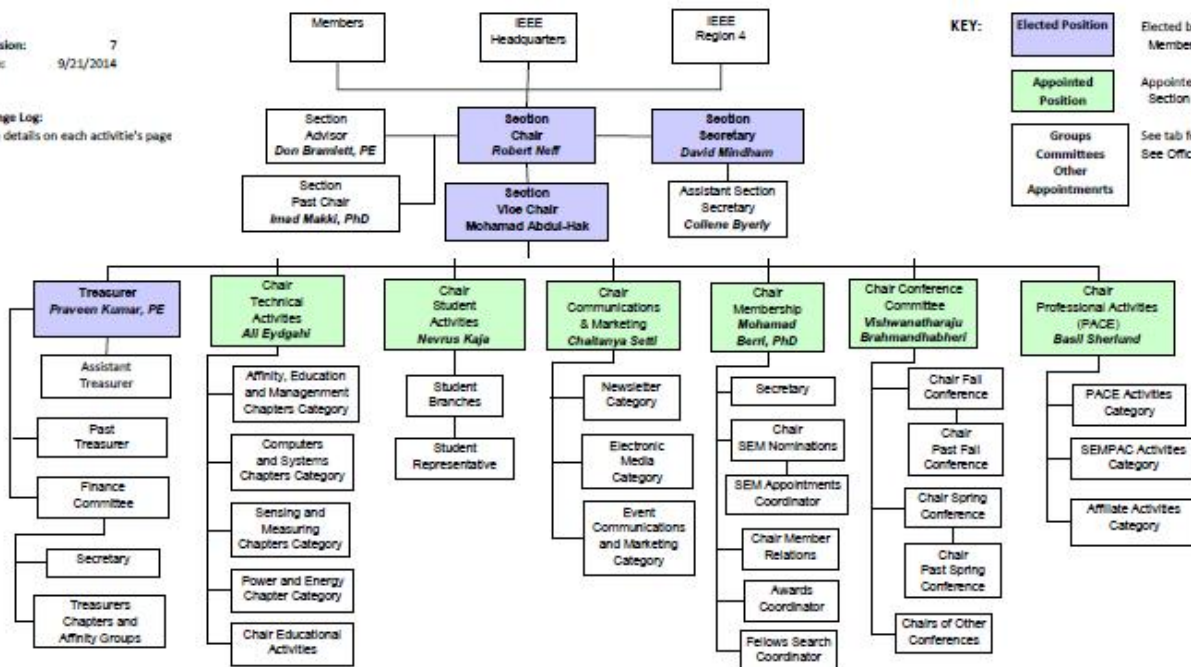
2014 Organization - IEEE Southeastern Michigan Section (SEM)

Revision: 7
Date: 9/21/2014

Change Log:
See details on each activity's page

KEY:

- Elected Position Elected by Section Membership
- Appointed Position Appointed by Section Chair
- Groups
Committees
Other
Appointments See tab for details
See Officers Roster



Section Mission & Goals**Section Focus:**

The IEEE SEM Senior Officers of the Section have reaffirmed the overall Mission and Goals of the Section, which align with the overall objectives of IEEE worldwide and with the guidance provided by our leadership in Region 4.

You have probably seen the Mission and Goals before. However, it is important to keep these clearly in mind and remind ourselves often that this is what we are about and what we are trying to accomplish.

Section Mission

Inspire – Enable – Empower and Engage Members of IEEE at the local level.

For the purpose of:

- Fulfilling the mission of IEEE (...**foster technological innovation and excellence for the benefit of humanity.**)
- Enhancing the members' growth and development throughout their life cycle
- Providing a professional home

Section Goals

- Increase member engagement,
- Improve relationships with and among members,
- Increase operational efficiency and effectiveness, within the section and its interfaces,
- Enhance collaboration – serve as the local face of IEEE to the community,
- Increase membership,
- Ensure the collection of appropriate information necessary to assist the IEEE to become a data driven organization.

It is now the task of the Section leadership to guide and coach all Section officers and elements to focus their activities on achieving those goals.

--30--

SEM Monthly Meetings**Scheduled Meetings:**

The regular meetings of the SEM 'Leadership' (Executive Committee) are scheduled well in advance to allow everyone to place them in their personal planning calendars, and then defend those dates against encroachment. (*Not always possible.*)

Two types of Monthly meetings are normally scheduled:

Monthly Teleconference / WebEx as well as:

Quarterly Face-to-Face.(See Below)

Note: All IEEE meetings are '**Open**' for all members to attend.

The only caveat is that you please register using the specific meeting form found at:

<https://meetings.vtools.ieee.org/main>

This will ensure we have sufficient space, refreshments and support for everyone who joins the meetings.

Teleconference Schedule (held from 12-1 PM):

- Thursday, August 7th
- Wednesday, September 3rd
- Wednesday, November 5th
- Thursday, December 4th

F2F Meeting Schedule:

- Thursday, October 2nd

More information for the f2f meetings will be sent out as the dates are approached. Keep in touch via the SEM Web site (<http://sites.ieee.org/sem/>) or use the links to the SEM Facebook or LinkedIn pages on the SEM Web page.

vTools Schedule:

All the normally scheduled meetings of each of the other Section 'units' are listed each month in the vTools area of our SEM website at:

http://ewh.ieee.org/r4/se_michigan/calendar1.php

These announcements refer to:

- Standing Committee Meetings:**
- Affinity Group Meetings:**
- Technical Chapter Meetings:**
- University Student Branch Meetings:**

Calendar Schedule:

Meetings are also announced on the SEM Web page Calendar

<http://sites.ieee.org/sem/>

(Select the "SEM Calendar" button in the top row.)

Note: Often meetings of the 'Executive Committees' of Chapters and Affinity Groups (and standing committees, of course) are listed only in the 'SEM Calendar' page, since it is felt that most members would not wish to sit through the 'administrative' meetings. However, if this type of meeting is just your 'cup of tea', then contact the officers of the unit that is conducting the meeting, and ask to be 'linked' into their teleconference, SKYPE, Google Hangout, or WebEx meeting. They would be happy to have you as a participant.

Many volunteers get interested in Section activities when they get a chance to attend an Monthly meeting and 'peek under the hood' to find out how the machinery of the Section actually runs. It can be a rewarding experience.

David Mindham

SEM Section Secretary.

dmindham@ieee.org

-30-

Editors Corner

This is the 8th 2014 issue of the Wavelengths newsletter.

Earlier editions in this series may be found on the IEEE SEM Web page at: <http://sites.ieee.org/sem/>. Click on the "Wavelengths" button in the top row of selections.

Comments and suggestions may be sent to the editor at k.williams@ieee.org. We also recommend a cc to the Chair of the Communications and Marketing Committee, Chaitanya Setti at: chaitanyagini@ieee.org.

The newsletter does not have a staff of reporters to 'investigate' what is going on in the Section and write up informative articles.

We rely on our Officers and Members to provide the 'copy' that we finally present to our readers as the newsletter.

Wavelengths – Focus Plan:

Month	AG's	Ch's	Ch's	SB's	Special Notice	Reporting Events	Monthly Focus	Awards
Jan		1		U/D-M	Future Cities Judges	Election Results	Resolutions	
Feb	Cons	2		MSU	Science Fair Judges	Officer's Welcome	Surviving Winter	Future Cities
Mar		3	13	U/M-AA	Spring Conf. Flyer	Spring Conference	Spring Conference	Science Fair
Apr		4		WSU	National Engrs Wk.	Future Cities	Chapter Focus	GOLD Award
May	Life	5	14	LTU	Outstanding Eng Awd	Science Fair	Humanitarian	New Fellows
Jun		6		SCC	IEEE-USA Apmts.	ESD Banquett	Leadership Skills	SEM Awards
Jul		7	15	U/W	Nominations Call	MD-Webcasts	Students Issues	Region 4
Aug	WIE	8		OU	MGA - Apmts.	Tech-Webinars	Womens Issues	
Sep		9	16	EMU	Region 4 Apmts.	Engineers Day	Professional Skills	
Oct		10		ITT	Fall Conf. Flyer		Fall Conference	
Nov	YP	11	17	U/M-D	ELECTIONS!			
Dec		12			IEEE-Com Apmts.	Fall Conference	Happy Holidays	

Wavelengths – Personal Profiles:

Month	Profiles	Profiles	Committees
Jan	Chair	New Officers	
Feb	V-Chair	Secretary	Communications
Mar	Treasurer	Sect-Adviser	Conference
Apr	Stud-Rep		Education
May		Sr Officers	Executive
Jun			Finance
Jul			Membership
Aug			Nominations
Sep			PACE Activities
Oct			Student Activities
Nov			Technical Activities
Dec		Editor-WL	

The **Wavelengths – Focus Plan and Personal Profiles** plan shown in the matrix below is conceived as a method to ensure a reasonable coverage of normally expected Section activities and events.

We try to finish each issue assembly by the week before the first of each month to allow time for review and corrections. If you have an article or notice, please try to get it to us on time or early if possible.

The plan below relies on the contributions of our members and officers, so please do not be shy. If you have something that should be shared with the rest of the Section, we want to give you that opportunity.

Letter to the Editor:

We would like to see "Letters to the Editor" as a regular column but, of course that means that someone must send an e-mail to the editor...[hint!](#)

Co-Editors:

I am selfishly looking for someone interested in helping to edit the newsletter along with me who can learn the process, share in the duties, and help keep the newsletter alive and lively by providing an alternative point of view.

If you feel you might be that person, or would like to train to become that person, please let me know.

k.williams@ieee.org

-30-



Web & Social Sites

SEM Website

<http://sites.ieee.org/sem/>

Each of the sites below may be accessed through the SEM Website:

Section Website Event Calendar
(Select the “SEM Calendar” button - top row.)

SEM Facebook Page

(Select the “” button under the top row.)

SEM LinkedIn Page

(Select the “” button under the top row.)

SEM Officers:

For a complete listing of all - Section - Standing Committee - Affinity Group - Chapter and Student Branch **officers**, see the SEM Officers Roster on the SEM web page under the “About SEM” button and select “Current Officers”.

SEM On Line Community

<http://sem.oc.ieee.org>

Section Officers

Section Chair
Robert Neff

Section Secretary
David Mindham

Section Vice-Chair
Mohamad Abdul-Hak

Section Treasurer
Praveen Kumar

Section Adviser
Don Bramlett

Chair Communications & Marketing
Chaitanya Setti

Chair Conferences
Raju Brahmandhabheri

Chair Educational Activities
Chaomin Luo

Chair Finance
Bassel Atallah

Chair Membership
Mohamad Berri

Chair Nominations
Chaitanya Setti

Chair Professional Activities
Basil Sherlund

Chair Student Activities
Basil Sherlund

Student Representative
Hanan Mekawy

Chair Technical Activities
Ali Eydgahi

Past Section Chair
Imad Makki



IEEE Southeastern Michigan

Visit Us on the Web at:
<http://sites.ieee.org/sem>

Leadership Meetings

All IEEE members are welcome to join us at any regularly scheduled meeting:

Advertising Rates

SEM Website & Newsletter
Advertising Rates / Month:

Our readers specify & purchase a wide range of electronic components, equipment and services. Our sponsors come from industry, education, and nonprofit organizations.

Full page \$500,

Half page \$250

Quarter page \$125,

Eighth page \$65.

SEM Executive Committee Monthly Teleconferences:

- 1st Thursday of Each Month @ Noon
- Check the Section Web Calendar at:
<http://sites.ieee.org/sem/>
(Select the "SEM Calendar" button in the top row.)

SEM Executive Committee Face-to-Face Meetings:

- 1/Qtr. Usually held at U/M-D Fairlane Center
- Registration at:
<https://meetings.vtools.ieee.org/main>

SEM Standing Committee Meetings:

SEM Affinity Group Meetings:

SEM Technical Chapter Meetings:

SEM University Student Branch Meetings:

- Meeting schedules are announced on SEM Web Calendar
<http://sites.ieee.org/sem/>
(Select the "SEM Calendar" button in the top row.)
- Registration for all at:
<https://meetings.vtools.ieee.org/main>